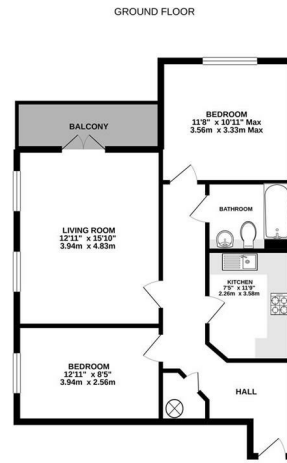




Dorchester Court, London Road | | Camberley | GU15 3JJ

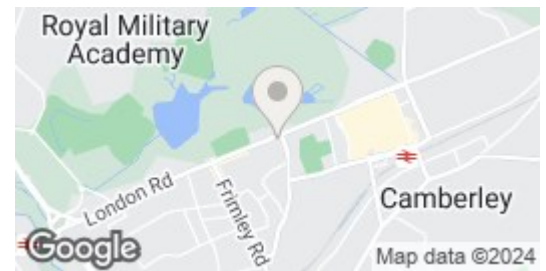
£1,500 Per Month

*Waterfords*   
Residential Sales & Lettings



Waterfords Agents has been made to ensure the accuracy of the floor plan. However, it is not a substitute for a professional survey. The floor plan is provided for information only and is not intended to be used as a legal document. The floor plan is provided for information only and is not intended to be used as a legal document.

Energy Efficiency Rating		Current	Potential
Very energy efficient - lower running costs			
(92 plus) A			
(81-91) B			
(69-80) C			
(55-68) D			
(39-54) E			
(21-38) F			
(1-20) G			
Not energy efficient - higher running costs			
England & Wales		EU Directive 2002/91/EC	



## Description

Waterfords Bring to the market this stunning apartment in Dorchester Court on London Road This delightful flat boasts a modern finish with two cosy bedrooms, perfect for a small family or professionals looking for a comfortable living space. Short distance to Camberley Town Centre Available with in just over two months notice

## Key features

- Two Bedroom Apartment
- Available With Just Over Two Months Notice
- Minimum 12 Month Let
- Balcony
- Executive Apartment In Camberley, Surrey
- Close To Town centre location and close to Camberley station, A30 & M3
- EPC C
- Council Tax Band D
- Secure Underground Parking
- Large Reception Room



35 Plough Road  
Hampshire  
GU46 7UW  
01276 903006

surreylettings@waterfords.co.uk  
<https://www.waterfords.co.uk/>