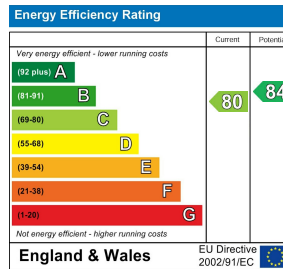
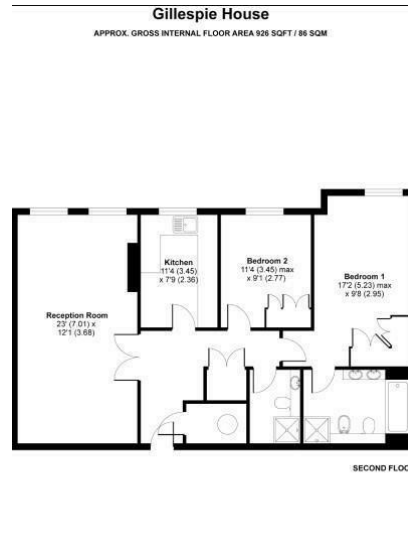




Gillespie House | Virginia Park | Virginia Water | GU25 4SU

£2,395 PCM

Waterfords 
Residential Sales & Lettings



Description

Welcome to Gillespie House in the charming Virginia Water! This stunning second-floor apartment boasts two double bedrooms and two bathrooms, perfect for a small family or professionals looking for a comfortable living space.

Situated in the sought-after Virginia Park Development, this property offers delightful views of the communal grounds, providing a serene and picturesque environment. The apartment features a spacious reception room, ideal for entertaining guests or simply relaxing after a long day.

One of the highlights of this property is the convenience of parking, ensuring you never have to worry about finding a spot for your vehicle. Additionally, being part-furnished, this

Key features

- Two Double Bedroom Apartment
- Beautiful Views
- Gated Development
- Minimum Term 12 Month Let
- EPC F
- Virginia Park Development
- Gym, Swimming pool and Tennis Courts Available
- 24 Hour Security
- Available End Of May 2024
- EPC C



35 Plough Road
Hampshire
GU46 7UW
01276 903006

surreylettings@waterfords.co.uk
<https://www.waterfords.co.uk/>