



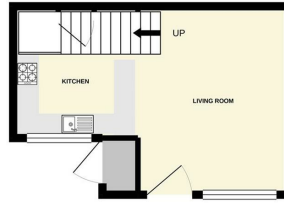
Church View | | Yateley | GU46 7TW

£1,100 PCM

Waterfords W
Residential Sales & Lettings



GROUND FLOOR
238 sq.ft. (22.1 sq.m.) approx.



1ST FLOOR
184 sq.ft. (17.1 sq.m.) approx.



TOTAL FLOOR AREA : 422 sq.ft. (39.2 sq.m.) approx.
Whilst every attempt has been made to ensure the accuracy of the figures contained here, measurements of doors, windows, rooms and any other items are approximate and no responsibility is taken for any error, omission or mis-statement. This plan is for illustrative purposes only and should be used as such by only prospective purchasers. The services, systems and appliances shown have not been tested and no guarantee as to their operability or efficiency can be given. Made with Metagen 1/2021

Energy Efficiency Rating		Current	Potential
Very energy efficient - lower running costs			
(92 plus)	A		
(81-91)	B		83
(69-80)	C		
(55-68)	D	60	
(39-54)	E		
(21-38)	F		
(1-20)	G		
Not energy efficient - higher running costs			
England & Wales		EU Directive 2002/91/EC	



Description

Waterfords are proud to present this one bedroom end terraced property located within walking distance to local amenities. Available 24th August 2024

Key features

- End Terraced House
- One Double Bedroom
- Easy Access To M3, M25 And A30
- Walking distance to local amenities
- Unfurnished
- Modern Kitchen With Appliances
- Available 24th August 2024



39 The Hart Centre
Fleet
Hampshire
GU51 3LA
01252 623330
hampshirelettings@waterfords.co.uk
<https://www.waterfords.co.uk/>