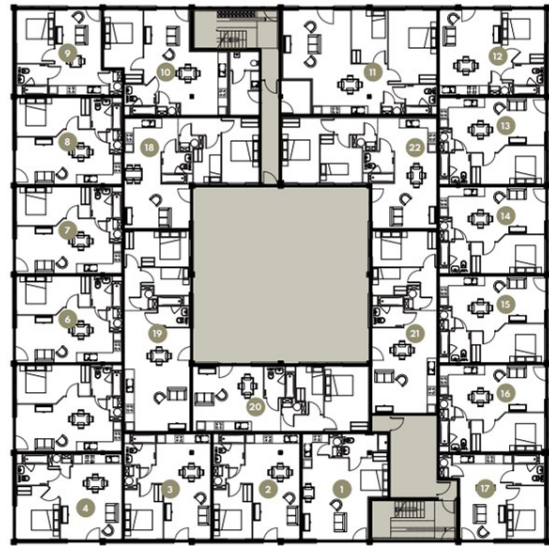




Springfield House | Ashwood Park | Ashwood Way | RG23 8BG

£1,275 PCM

**Waterfords**  
Residential Sales & Lettings



Energy Efficiency Rating		
	Current	Potential
Very energy efficient - lower running costs		
(92 plus) A		
(81-91) B		
(69-80) C		
(55-68) D		
(39-54) E	55	55
(21-38) F		
(1-20) G		
Not energy efficient - higher running costs		
England & Wales	EU Directive 2002/91/EC	



## Description

A well-presented two-bedroom apartment located in the popular Springfield House at Ashwood Park, Basingstoke. The property offers bright and spacious accommodation, set within a well-maintained development and conveniently positioned for local amenities and transport links. Available to let and ideal for professionals or a small family.

## Key features

- Two Bedroom Apartment
- Modern Finish Throughout
- Unfurnished
- Minimum Term 12 Month Let
- Ground Floor
- Permit Parking
- Available March 2026



39 The Hart Centre  
Fleet  
Hampshire  
GU51 3LA  
01252 623330  
hampshirelettings@waterfords.co.uk  
<https://www.waterfords.co.uk/>