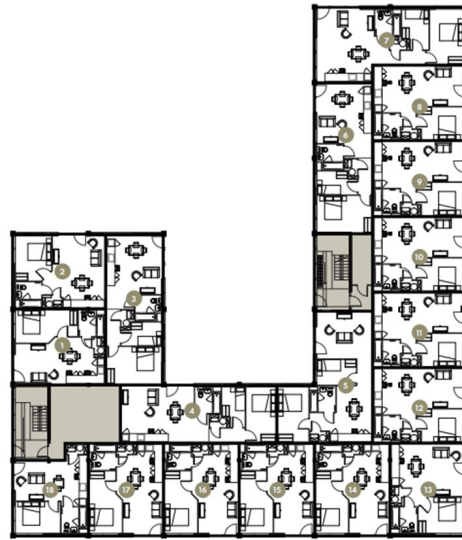
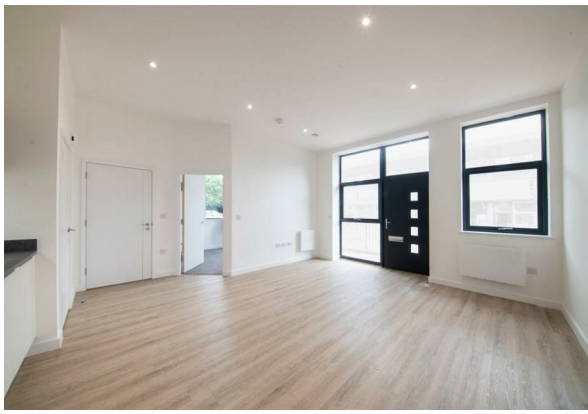




Fairview House | Ashwood Park | Ashwood Way | RG23 8BG

£1,040 PCM

Waterfords 
Residential Sales & Lettings



Energy Efficiency Rating		
	Current	Potential
Very energy efficient - lower running costs		
(92 plus) A		
(81-91) B		
(69-80) C		
(55-68) D		
(39-54) E	57	57
(21-38) F		
(1-20) G		
Not energy efficient - higher running costs		
England & Wales		EU Directive 2002/91/EC



Description

A well-presented one-bedroom apartment located in the sought-after Ashwood Park development. The property features a bright open-plan living area, a modern fitted kitchen, a spacious double bedroom, and a contemporary bathroom. Ideally positioned close to local amenities, transport links, and Basingstoke town centre — perfect for professionals or couples.

Key features

- Two Bedroom Apartment to rent
- Water & electric separately metered
- Intergrated fridge freezer, dishwasher, ceramic hob & electric oven
- Rain shower & heated towel rail
- Smart Parcel drop box facility & On-site manager 's office.
- Combination blinds partial or full black-out
- Lightning fast Fibre Broadband plus TV, telephone & Sky Q points.
- LED mirror with shaver socket & demister function
- Onsite parking included in the rent
- Available January 2026



39 The Hart Centre
Fleet
Hampshire
GU51 3LA
01252 623330
hampshirelettings@waterfords.co.uk
<https://www.waterfords.co.uk/>