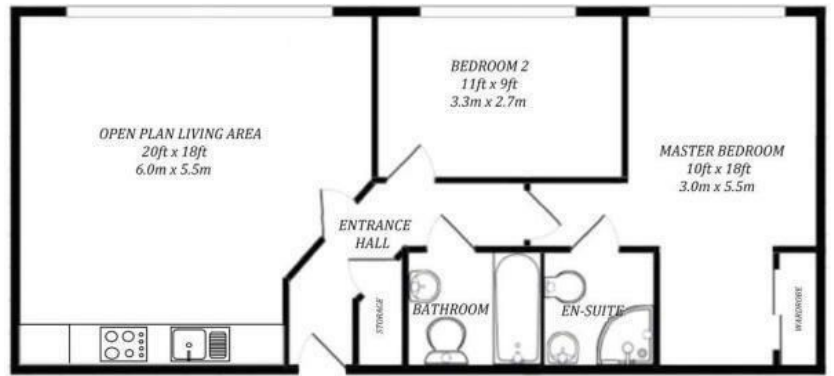




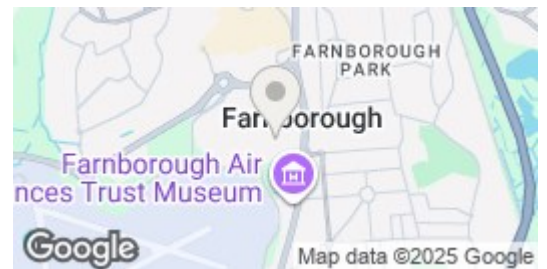
Wessex Court | Farnborough | Hampshire | GU14 7WY

£1,500 PCM

Waterfords
Residential Sales & Lettings



| Energy Efficiency Rating | | |
|---|-------------------------|-----------|
| | Current | Potential |
| Very energy efficient - lower running costs | | |
| (92 plus) A | | |
| (81-91) B | | |
| (69-80) C | | |
| (55-68) D | | |
| (39-54) E | | |
| (21-38) F | | |
| (1-20) G | | |
| Not energy efficient - higher running costs | | |
| England & Wales | 84 | 85 |
| | EU Directive 2002/91/EC | |



Description

****MORDERN TWO BEDROOM TOP FLOOR APARTMENT****

This highly finished apartment offers a modern open living space. The apartment is in a prime location, only a short walk from local amenities and Farnborough station. This property is fully furnished to a high standard.

Key features

- Two Double Bedrooms
- First Floor Apartment
- Available 2nd December 2025
- Minimum Term 6 months
- Council Tax - Band C
- En suites to Master and Further Family Bathroom
- High Standard Through Out
- Furnished
- EPC - Band C



39 The Hart Centre
Fleet
Hampshire
GU51 3LA
01252 623330

hampshirelettings@waterfords.co.uk
<https://www.waterfords.co.uk/>