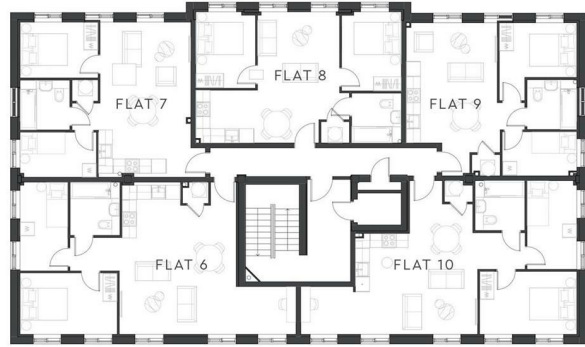




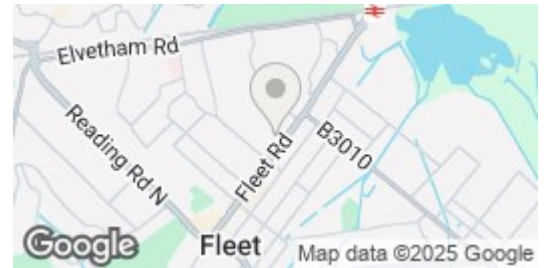
Westminster House | Albert Street | Fleet | GU51 4NR

£1,220 PCM

Waterfords W
Residential Sales & Lettings



Energy Efficiency Rating		
	Current	Potential
Very energy efficient - lower running costs		
(92 plus) A		
(81-91) B		
(69-80) C		
(55-68) D		
(39-54) E		
(21-38) F		
(1-20) G		
Not energy efficient - higher running costs		
England & Wales	EU Directive 2002/91/EC	



Description

Waterfords Fleet are delighted to present a collection of contemporary converted apartments in the heart of Fleet town centre. Elizabeth and Westminster House are ideally located on the bustling Fleet Road within a ten-minute walk of the mainline station.

This modern development offers a range of one- and two-bedroom maisonettes and apartments over three floors. The apartments are finished to an exceptional specification with a fully fitted kitchen featuring high quality built-in appliances. Careful consideration has gone into the design of each unit to maximise space and light. The apartments vary in layout from one-bedroom units to two bedroom and two bathroom units, making the larger apartments ideal for a flat share.

All apartments in Elizabeth and Westminster House benefit from secure allocated parking behind the property, bike shed storage and video entry system. There is also pre-wired Virgin TV in each of the apartments

Key features

- Two Bedroom Apartment
- Heart of Fleet Town Centre
- Unfurnished
- EPC Rating: D
- Modern Apartments
- Available 6th November 2025
- Minimum Term 6 Month Let
- Council Tax: C



39 The Hart Centre
Fleet
Hampshire
GU51 3LA
01252 623330
hampshirelettings@waterfords.co.uk
<https://www.waterfords.co.uk/>