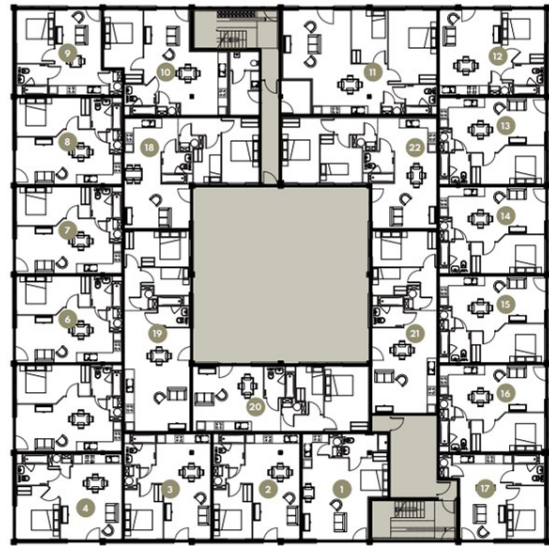




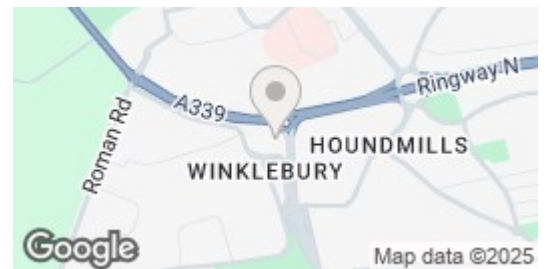
Springfield House | Ashwood Park | Ashwood Way | RG23 8DJ

£1,220 PCM

**Waterford's** *W*  
Residential Sales & Lettings



Energy Efficiency Rating		
	Current	Potential
Very energy efficient - lower running costs		
(92 plus) A		
(81-91) B		
(69-80) C		
(55-68) D	66	66
(39-54) E		
(21-38) F		
(1-20) G		
Not energy efficient - higher running costs		
England & Wales	EU Directive 2002/91/EC	



## Description

A modern and well-presented one-bedroom apartment located in the popular Springfield House development in central Basingstoke. This bright and airy property features an open-plan living area with a contemporary kitchen, a spacious double bedroom, and a stylish bathroom. Ideally situated within walking distance of Basingstoke train station and Festival Place shopping centre, this apartment is perfect for commuters or professionals. Offered unfurnished and available 11th August 2025

## Key features

- One Bedroom Apartment
- Water & electric separately metered
- Intergrated fridge freezer, dishwasher, ceramic hob & electric oven
- Rain shower & heated towel rail
- Smart Parcel drop box facility & On-site manager 's office.
- Combination blinds partial or full black-out
- Lightning fast Fibre Broadband plus TV, telephone & Sky Q points.
- LED mirror with shaver socket & demister function
- Onsite parking included in the rent
- Available August 2025



39 The Hart Centre  
Fleet  
Hampshire  
GU51 3LA  
01252 623330

[hampshirelettings@waterfords.co.uk](mailto:hampshirelettings@waterfords.co.uk)  
<https://www.waterfords.co.uk/>