



Flat 16, Festival Apartments

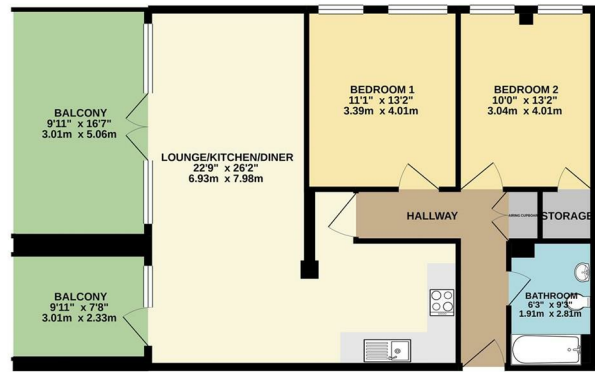
Wote Street | Basingstoke | Hampshire | RG21 7NF

£1,475 PCM

Waterfords
Residential Sales & Lettings

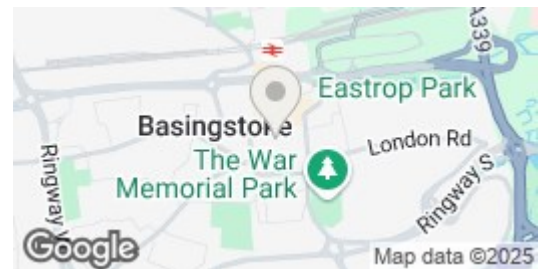


GROUND FLOOR
846 sq.ft. (78.6 sq.m.) approx.



TOTAL FLOOR AREA: 846 sq ft. (78.6 sq m.) approx.
While every effort has been made to ensure the accuracy of the floorplan, Waterfords does not accept any liability for any errors, omissions, or any other errors and is not responsible for any loss or damage in any way arising from the use of the floorplan. The floorplan is for illustrative purposes only and should not be used as a basis for any decision. The floorplan, layout and dimensions are subject to change without notice and no guarantee is given. Waterfords (2025)

Energy Efficiency Rating		
	Current	Potential
Very energy efficient - lower running costs		
(92 plus) A		
(81-91) B		
(69-80) C		
(55-68) D		
(39-54) E	51	51
(21-38) F		
(1-20) G		
Not energy efficient - higher running costs		
England & Wales	EU Directive 2002/91/EC	



Description

Waterfords are delighted to present to the market this stunning two-bedroom apartment with Basingstoke Town Centre Available Now Unfurnished

Key features

- Two Bedrooms
- One Bathroom
- Modern Throughout
- Available Now
- Minimum Term 6 Month Let
- Residents Parking
- Two Balcony's
- Town Centre Location
- Unfurnished
- Council Tax Band C



39 The Hart Centre
Fleet
Hampshire
GU51 3LA
01252 623330
hampshirelettings@waterfords.co.uk
<https://www.waterfords.co.uk/>