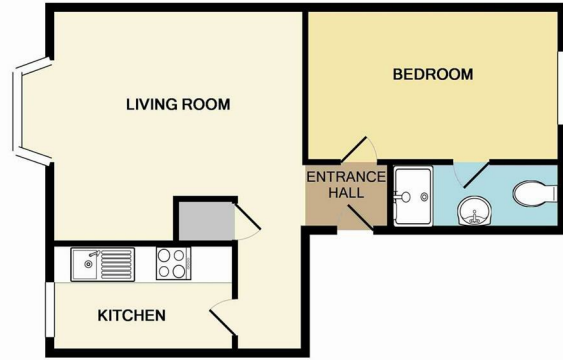




Tilford Road | Farnham | Surrey | GU9 8DL

£950 PCM

Waterfords
Residential Sales & Lettings



TOTAL APPROX. FLOOR AREA 441 SQ.FT. (41.0 SQ.M.)
 Whilst every attempt has been made to ensure the accuracy of the floor plan contained here, measurements of doors, windows, rooms and any other items are approximate and no responsibility is taken for any error, omission, or mis-statement. This plan is for illustrative purposes only and should be used as such by any prospective purchaser. The services, systems and appliances shown have not been tested and no guarantee as to their operability or efficiency can be given
 Made with Metropix ©2016

Energy Efficiency Rating		Current	Potential
Very energy efficient - lower running costs			
(92 plus)	A		
(81-91)	B		
(69-80)	C		
(55-68)	D		
(39-54)	E		
(21-38)	F		
(1-20)	G		
Not energy efficient - higher running costs			
England & Wales		EU Directive 2002/91/EC	



Description

Welcome to this charming apartment located on Tilford Road in the desirable town of Farnham. This modern property boasts one reception room, one bedroom, and a well-appointed bathroom, making it an ideal home for a single professional to settle in a convenient location.

Situated in a sought-after area, this apartment offers a perfect blend of comfort and style. The open-plan layout of the reception room creates a welcoming space for relaxing and entertaining, while the bedroom provides a peaceful retreat at the end of the day. The bathroom is sleek and functional, adding to the contemporary feel of the property.

Key features

- Luxury One Bedroom Apartment
- Modern Apartment
- Available 25th September 2024
- Council Tax Band B
- EPC D
- Walking Distance to Farnham Train Station
- Large Living Space
- Unfurnished
- Permit Parking Available On Street (Additional £50.00 per annum)
- 12 Month Let



39 The Hart Centre
 Fleet
 Hampshire
 GU51 3LA
 01252 623330

hampshirelettings@waterfords.co.uk
<https://www.waterfords.co.uk/>