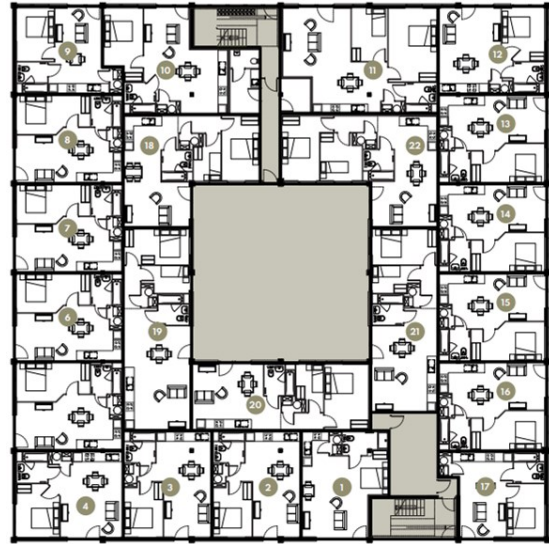




Springfield House | Ashwood Park | Ashwood Way | RG23 8DJ

£1,025 PCM

Waterfords 
Residential Sales & Lettings



Energy Efficiency Rating		Current	Potential
Very energy efficient - lower running costs			
(92 plus)	A		
(81-91)	B		
(69-80)	C		
(55-68)	D	58	58
(39-54)	E		
(21-38)	F		
(1-20)	G		
Not energy efficient - higher running costs			
England & Wales		EU Directive 2002/91/EC	



Description

Welcome to Springfield House in the charming town of Basingstoke! This delightful apartment boasts a modern and contemporary design, perfect for those seeking a stylish living space.

Upon entering, you are greeted by a cosy reception room, ideal for relaxing or entertaining guests. The property features one spacious bedroom, offering a peaceful retreat at the end of a long day. The bathroom is sleek and well-appointed, providing both comfort and convenience.

Located in a convenient area, Springfield House offers parking space for two vehicles, ensuring you never have to worry about finding a spot. With the apartment becoming available on the 23rd of August 2024, you have the opportunity to make this lovely space your own in the near future.

Key features

- One Bedroom Apartment
- Water & electric separately metered
- Intergrated fridge freezer, dishwasher, ceramic hob & electric oven
- Rain shower & heated towel rail
- Smart Parcel drop box facility & On-site manager 's office.
- Combination blinds partial or full black-out
- Lightning fast Fibre Broadband plus TV, telephone & Sky Q points.
- LED mirror with shaver socket & demister function
- Onsite parking included in the rent
- Available August 2024



39 The Hart Centre
Fleet
Hampshire
GU51 3LA
01252 623330

hampshirelettings@waterfords.co.uk
<https://www.waterfords.co.uk/>