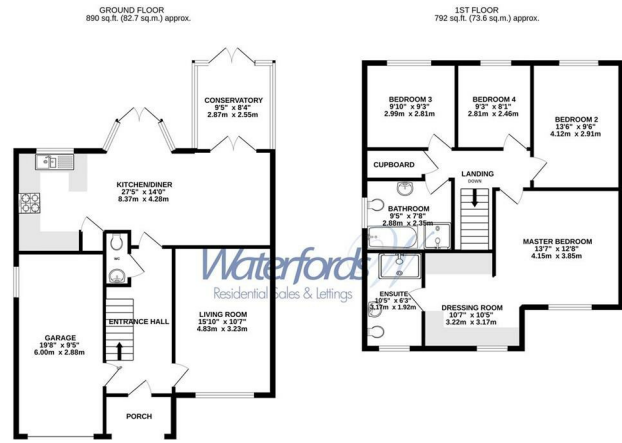




Kings Worthy Road | Fleet | Hampshire | GU51 1AG

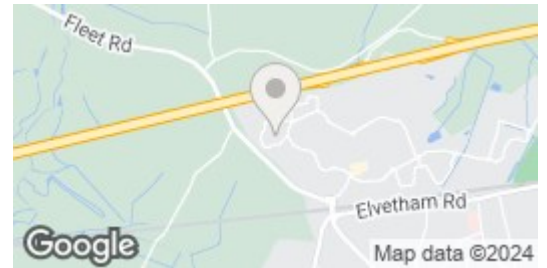
£2,450 PCM

*Waterfords* W  
Residential Sales & Lettings



TOTAL FLOOR AREA: 1682 sq.ft. (156.3 sq.m.) approx.  
While every effort has been made to ensure the accuracy of the figures contained here, measurements of areas, volumes, weight and any other items are approximate and no responsibility is taken for any error, omission or misstatement. This plan is for illustrative purposes only and should be used in conjunction with a professional surveyor. The services, fixtures and fittings shown here have been listed and no guarantee is made with respect to their condition or efficiency can be given.  
 Map data ©2024

Energy Efficiency Rating		Current	Potential
Very energy efficient - lower running costs			
(92 plus)	A		82
(81-91)	B		
(69-80)	C	68	
(55-68)	D		
(39-54)	E		
(21-38)	F		
(1-20)	G		
Not energy efficient - higher running costs			
England & Wales		EU Directive 2002/91/EC	



## Description

Waterfords are delighted to present this stunning four bedroom detached family home on the sought after development of Elvetham Heath, available for rent on a unfurnished basis from 10th September 2024.

## Key features

- Modern Four Bedroom Family Home
- New W/C
- Unfurnished
- Available September 10th 2024
- Two Brand New Bathrooms
- Off Road Parking
- Minimum Term 6 Month Let
- Garage



39 The Hart Centre  
 Fleet  
 Hampshire  
 GU51 3LA  
 01252 623330  
 hampshirelettings@waterfords.co.uk  
 https://www.waterfords.co.uk/