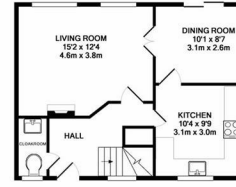




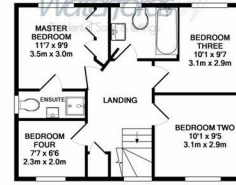
Chertsey Street | Elvetham Heath | Fleet | GU51 1HS

£2,150 PCM

Waterfords 
Residential Sales & Lettings



GROUND FLOOR



1ST FLOOR

Whilst every attempt has been made to ensure the accuracy of the floor plan contained here, measurements of floors, windows, doors and any other items are approximate and the responsibility is taken for any error, omission, or misstatement. This plan is for illustrative purposes only and should be used as such by any prospective purchaser. The services, systems and appliances shown have not been tested and no guarantee as to their operability or efficiency can be given.
Made with Neoplan (2023)

Energy Efficiency Rating		Current	Potential
Very energy efficient - lower running costs			
(92 plus)	A		86
(81-91)	B		
(69-80)	C		
(55-68)	D		
(39-54)	E		
(21-38)	F		
(1-20)	G		
Not energy efficient - higher running costs			
England & Wales		EU Directive 2002/91/EC	



Description

Waterfords are proud to present this stunning four bedroom house to rent in the popular Elvetham Heath development within walking distance of all local amenities. The property is available to rent 27th August 2024 on an unfurnished basis.

Key features

- Off Road Parking
- Four Well Proportioned Bedrooms
- Unfurnished
- Ample Living Space
- Low Maintenance Garden
- Available August 27th 2024



39 The Hart Centre
 Fleet
 Hampshire
 GU51 3LA
 01252 623330
hampshirelettings@waterfords.co.uk
<https://www.waterfords.co.uk/>