



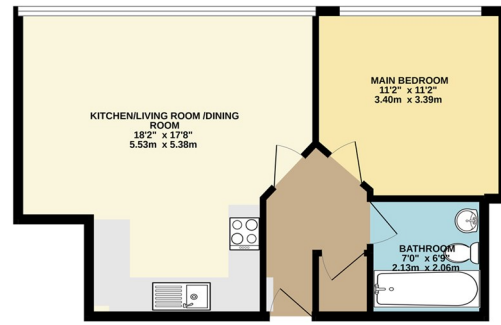
Wessex Court | Kestrel Road | Farnborough | GU14 7WY

£1,100 PCM

Waterfords W
Residential Sales & Lettings



GROUND FLOOR



While every effort has been made to ensure the accuracy of the floorplan, please note that measurements are for guidance only and are not intended to be used for any legal or financial purposes. The actual dimensions of the property may vary slightly from those shown on the floorplan. The actual dimensions of the property may vary slightly from those shown on the floorplan. The actual dimensions of the property may vary slightly from those shown on the floorplan. The actual dimensions of the property may vary slightly from those shown on the floorplan.

Energy Efficiency Rating		Current	Potential
Very energy efficient - lower running costs			
(92 plus)	A		
(81-91)	B	81	81
(69-80)	C		
(55-68)	D		
(39-54)	E		
(21-38)	F		
(1-20)	G		
Not energy efficient - higher running costs			
England & Wales		EU Directive 2002/91/EC	



Description

Welcome to Wessex Court in the charming town of Farnborough! This exquisite one-bedroom luxury apartment is a gem waiting to be discovered. Available in August 2024 Unfurnished

Key features

- Apartment
- Allocated Parking
- Available 17th August 2024
- Council Tax Band B
- EPC B
- Double Bedroom
- Popular Location
- Fully Furnished
- 12 Month Tenancy



39 The Hart Centre
 Fleet
 Hampshire
 GU51 3LA
 01252 623330
 hampshirelettings@waterfords.co.uk
<https://www.waterfords.co.uk/>