



—dreampad—

Woodside

Wollensbrook, Hoddesdon, Herts, EN11 9BN





Kitchen / Breakfast Room



**Woollensbrook, Nr Hoddesdon, Herts - Recently Refurbished Throughout... An Individual Detached Period Property Dating Back To The 1880's on 0.75 Of An Acre, Ideally Placed For Haileybury College.**

Woodside, Wollensbrook, Hoddesdon, Hertfordshire, EN11 9BN

Offers in Excess of £1,000,000

This period detached house offers spacious accommodation arranged over 3 floors to include on the ground floor a spacious entrance hall, kitchen/breakfast room, sitting room & snug/playroom, to the first floor there is a large living room, 4 bedrooms and a family bathroom, to the 2nd floor the property provides a large master bedroom with en-suite.

The house is accessed via a private drive and security gates and provides a good size lawn garden with mature trees to the boundaries (Approx 3 quarters of an acre) with plenty of private parking within the grounds, offered with no onward chain for a quick sale.





Living Room





Other Ground Floor Images



Master Bedroom





Bedrooms, Shower Room & En Suite



Family Bathroom

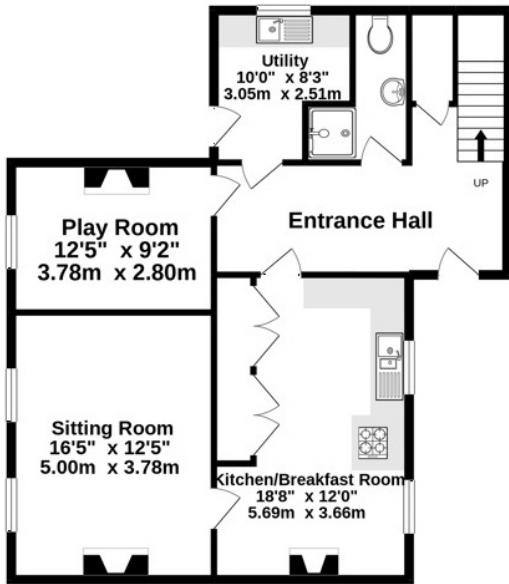




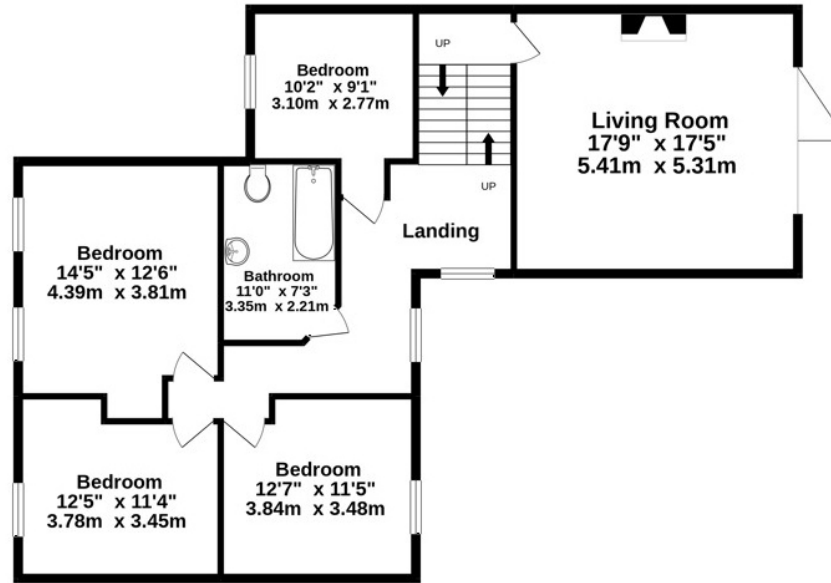
Rear Garden



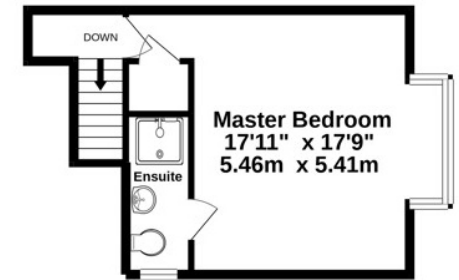
GROUND FLOOR  
814 sq.ft. (75.6 sq.m.) approx.



1ST FLOOR  
1091 sq.ft. (101.3 sq.m.) approx.



2ND FLOOR  
338 sq.ft. (31.4 sq.m.) approx.



TOTAL FLOOR AREA: 2243 sq.ft. (208.0 sq.m.) approx.

Made with Metropix ©2021





**Transport:** Rye House Station (London Liverpool Street) – 1.7 miles  
A10 - 1.9 miles

**Services:** Mains Gas, Mains Water & Mains Drainage

**Council Tax:** Band G

**Local Authority:** Broxbourne Council

### **Important Notice:**

Dreampad, their clients and any joint agents give notice that:

1. They are not authorised to make or give any representations or warranties in relation to the property either here or elsewhere, either on their own behalf or on behalf of their client or otherwise. They assume no responsibility for any statement that may be made in these particulars. These particulars do not form part of any offer or contracts and must not be relied upon as statements of representations of fact.
2. Any areas, measurements or distances are approximate. The text, photographs and plans are for guidance only and are not necessarily comprehensive. It should not be assumed that the property has all necessary planning, building regulations or other consents and Dreampad have not tested any services, equipment or facilities. Purchasers must satisfy themselves by inspection or otherwise.

[Further Information](#)





Tel: 0333 772 9775  
[info@dreampad.com](mailto:info@dreampad.com)  
[www.dreampad.com](http://www.dreampad.com)