



Dendrons The Chase, Oxshott. KT22 0HR
£20,000 pcm



Dendrons The Chase

Oxshott, KT22 0HR

A stunning luxury home in the popular Knott Park Estate which is close to Danes Hill School. First impressions of the home are an impressive hall with a beautiful limestone floor which runs through to the superb open plan kitchen family room. This comes complete with a bespoke kitchen, utility room and Belgium style doors leading out to a sun terrace in the West-facing garden. The formal living and dining room is both elegant and practical with floor to ceiling doors out to the rear terrace and swimming pool.

The principal bedroom suite runs the full width of the rear of the property and overlooks the garden and pool via its own private terrace. There are two dressing rooms at either end of the suite and a superb bathroom with freestanding bath and large walk-in shower. The other bedrooms on the first floor are of generous proportions one in particular having four double bunk beds perfect for the kids to share.

The top floor has two more bedrooms one being en-suite and the other having access to a further bathroom and a room designed to hold fitness equipment. There is an annexe space which is located above the double garage.

EPC Rating: B

Council Tax: H





The Chase

Approximate Gross Internal Area

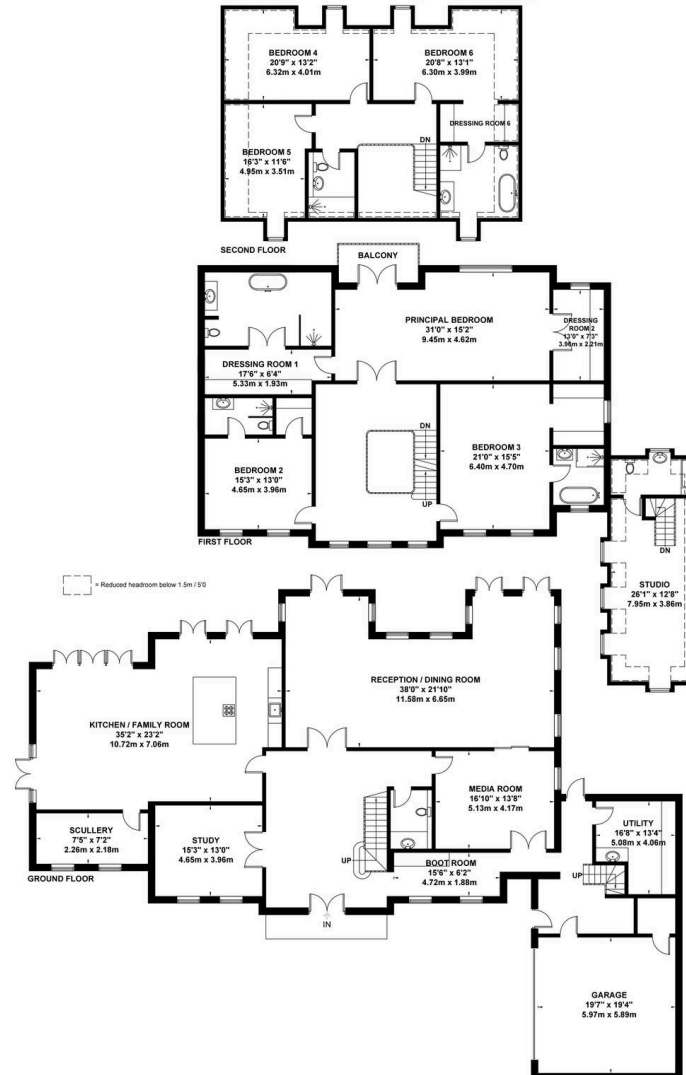
Ground Floor = 281.9 sq m / 3034 sq ft

First Floor = 227.5 sq m / 2448 sq ft

Second Floor = 112.2 sq m / 1207 sq ft

Garage = 35.10 sq m / 377 sq ft

Total = 656.7 sq m / 7066 sq ft



Viewmedia @ 2021
Viewmedia.co.uk

Whilst every attempt has been made to ensure the accuracy of this floor plan, measurements of doors, windows and rooms are approximate and no responsibility is taken for any error or omission. This illustration is for identification purpose only. Measured and drawn accordance with RICS guidelines. Not drawn to scale, unless stated. Dimensions shown are to the nearest 3" and are to the points indicated by the arrow heads.

DAVIES
PROPERTY PARTNERS