



6 Kingsmead 98 Foley Road, Claygate  
£2,000 pcm



# 6 Kingsmead 98 Foley Road

, Esher

A two bedroom / two bathroom character conversion, forming one half of a coach house style property, located in a highly-regarded road and within just a short walk of the village centre. EPC D Council Tax band: E

Tenure: Leasehold

- Coach house conversion
- Available unfurnished from May 2023
- 2 double bedrooms, bathroom an en suite shower room
- Sitting room, kitchen and cloakroom / wc
- Recently redecorated
- Heart of the Village
- Private garage
- Own garden
- EPC D

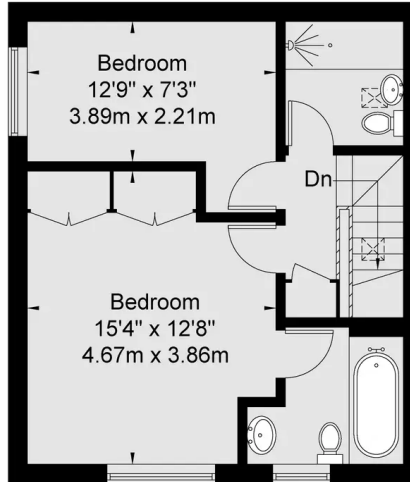




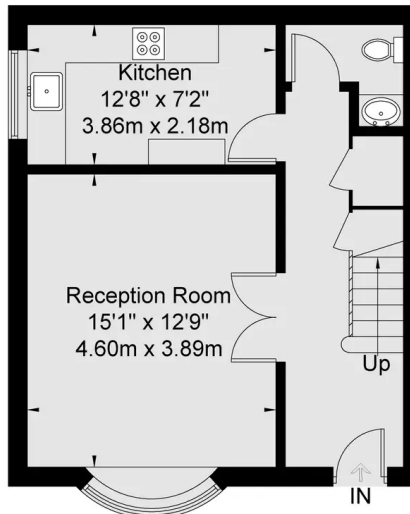


# Foley Road

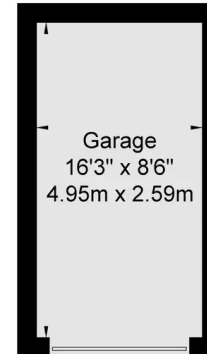
Approx Gross Internal Area  
Ground Floor = 41.0 Sq m 441 Sq Ft  
First Floor = 41.0 Sq m 441 Sq Ft  
Garage = 12.8 Sq m 138 Sq Ft  
Total = 94.8 Sq m / 1020 Sq Ft



**First Floor**



**Ground Floor**



(Not Shown In Actual Location / Orientation)

Viewmedia @ 2022  
Viewmedia.co.uk

Whilst every attempt has been made to ensure the accuracy of this floor plan, measurements of doors, windows and rooms are approximate and no responsibility is taken for any error or omission. This illustration is for identification purpose only. Measured and drawn accordance with RICS guidelines. Not drawn to scale, unless stated. Dimensions shown are to the nearest 3" and are to the points indicated by the arrow heads.