



11 Weston Lodge Portsmouth Road, Thames Ditton
£2,750 pcm



11 Weston Lodge Portsmouth Road

Thames Ditton, Thames Ditton

This impeccably maintained 3-bedroom semi-detached house offers a fusion of contemporary living and exuding character.

The ground floor consists large sitting room, with exposed brick fireplace and French doors leading to the garden, large modern kitchen and open plan dining area, study and utility room. Upstairs, is the choice of three double bedrooms, two bathrooms, one being an en-suite and the other a family bathroom with dual access.

Externally, a wide patio garden is to the rear of the property, offering a south-easterly orientation and quaint flower beds. To the front of the property is off street parking, suitable for one or two vehicles, a charming front garden and store.

Thames Ditton is a vibrant village, with plenty of shops, restaurants, green areas and quick transport links into London.

Council Tax band: E

Tenure: Freehold

EPC Energy Efficiency Rating: D

EPC Environmental Impact Rating: D

- Semi-detached house

Call us to arrange a viewing on **(01372) 462323**

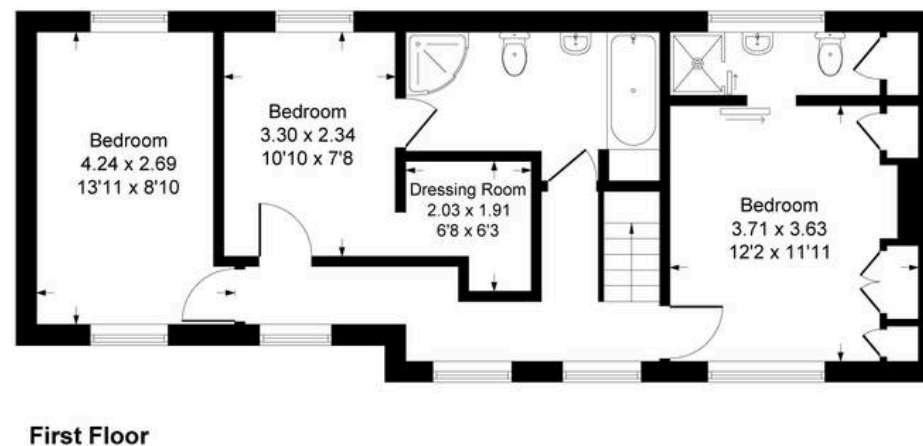
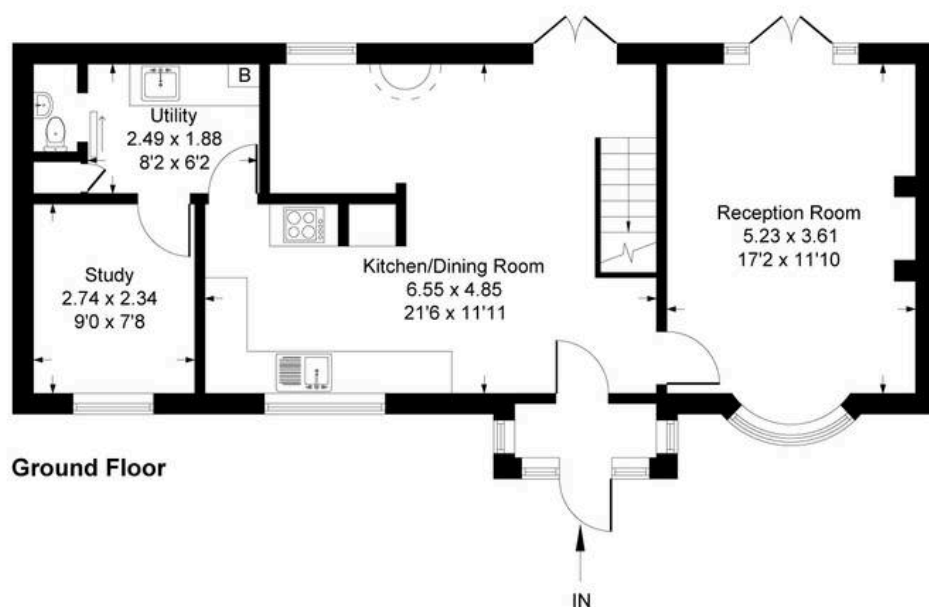
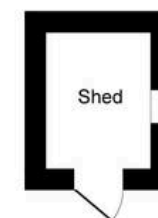
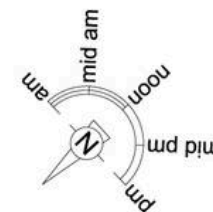
- Off street parking
- Newly redecorated





Portsmouth Road, Thames Ditton KT7

Approximate Gross Internal Area
121.8 sq m / 1312 sq ft



Floor plan produced in accordance with RICS Property Measurement Standards incorporating International Property Measurement Standards (IPMS2 Residential).
Produced for Davies & Co by IDENTIKA LTD

DAVIES
PROPERTY PARTNERS