



9 Lavender Gate, Oxshott
£3,500 pcm



9 Lavender Gate

Oxshott, Leatherhead

A modern five bedroom property set behind electric gates in a small mews development of just 10 houses just 1 mile from Oxshott train station.

This family home offers a good balance of space throughout with three reception spaces downstairs, a living room to the front, a kitchen diner to the rear and a home office in the middle.

On the first floor there are four bedrooms, the primary having an en-suite shower room, as well as a family bathroom.

The top floor has a loft room which has the ability to be used as a further bedroom with its en-suite despite its restricted headroom.

With great local schooling including The Royal Kent School and Danes Hill, and being within close proximity of Oxshott station for the commuter, Lavender Gate, is an ideal family home and viewings are advised.

The property benefits from two allocated parking spaces within the development.

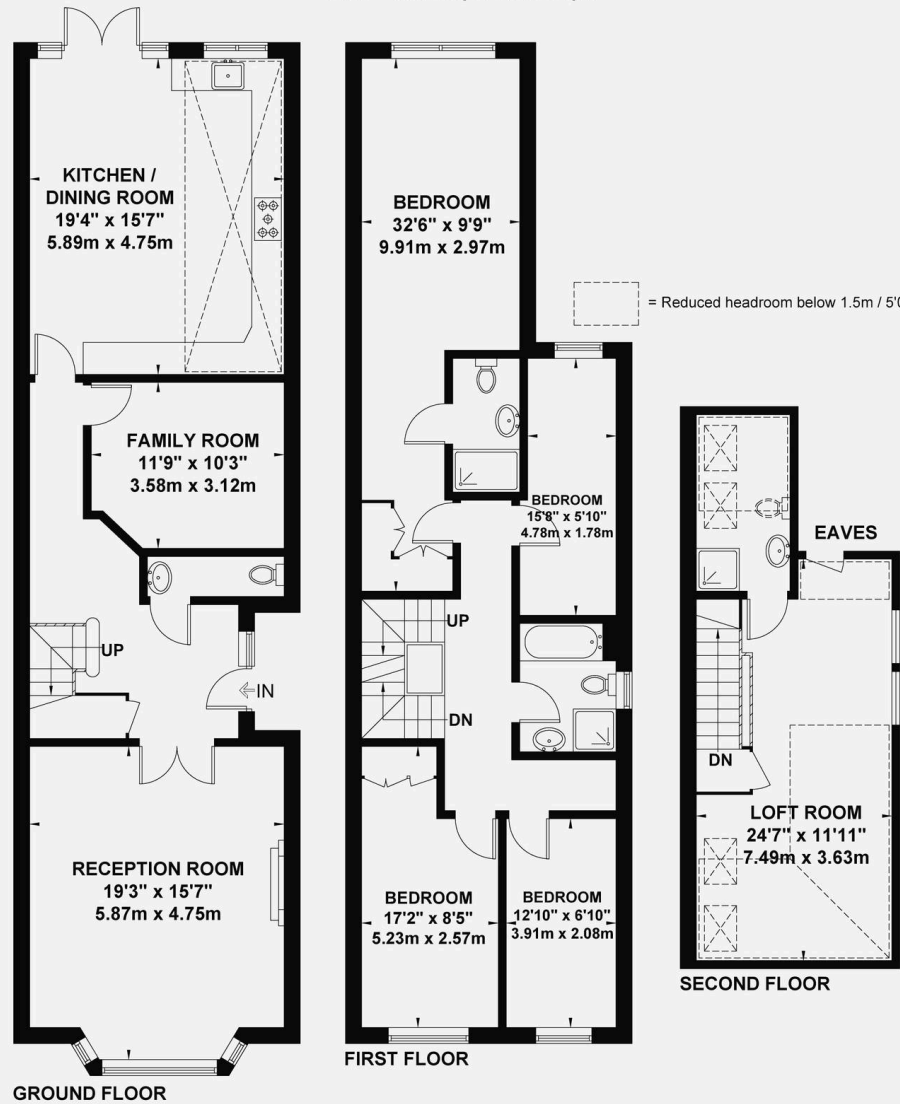
EPC C

Council tax band F



Lavender Gate

Approximate Gross Internal Area
 Ground Floor = 85.2 sq m / 917 sq ft
 First Floor = 75.9 sq m / 816 sq ft
 Second Floor = 32.10 sq m / 345 sq ft
 Total = 193.2 sq m / 2078 sq ft



Copyright @ 2020
 Copyright.co.uk

Whilst every attempt has been made to ensure the accuracy of this floor plan, measurements of doors, windows and rooms are approximate and no responsibility is taken for any error or omission. This illustration is for identification purpose only. Measured and drawn accordance with RICS guidelines. Not drawn to scale, unless stated. Dimensions shown are to the nearest 3" and are to the points indicated by the arrow heads.