



55 The Drive, Esher  
£2,850 pcm

**DAVIES**  
PROPERTY PARTNERS





## 55 The Drive

Esher, Esher

A beautiful, modern three bedroom home finished to a high specification with a private, enclosed garden and garage.

The ground floor consists of entrance hall, an excellent sized kitchen/breakfast room, downstairs cloakroom and a lounge/diner with French doors leading to the enclosed garden. To the first floor there is a Master bedroom with en-suite shower room, enjoying views over the adjoining fields, and an additional two bedrooms and modern family bathroom. Further benefits include a single garage and off-street parking. Situated in a quite cul-de-sac, this charming property is equidistant to both Esher and Thames Ditton High Streets, both being just 1 mile away, and Esher Station is just over half a mile away.

EPC C

Council Tax band: F





## The Drive, Esher, KT10

Approximate Area = 1011 sq ft / 93.9 sq m

Limited Use Area(s) = 27 sq ft / 2.5 sq m

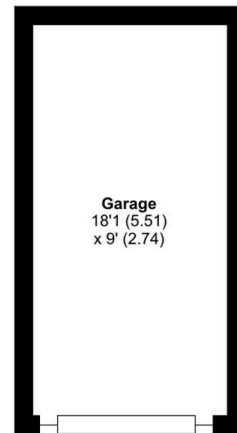
Garage = 163 sq ft / 15.1 sq m

Total = 1201 sq ft / 111.5 sq m

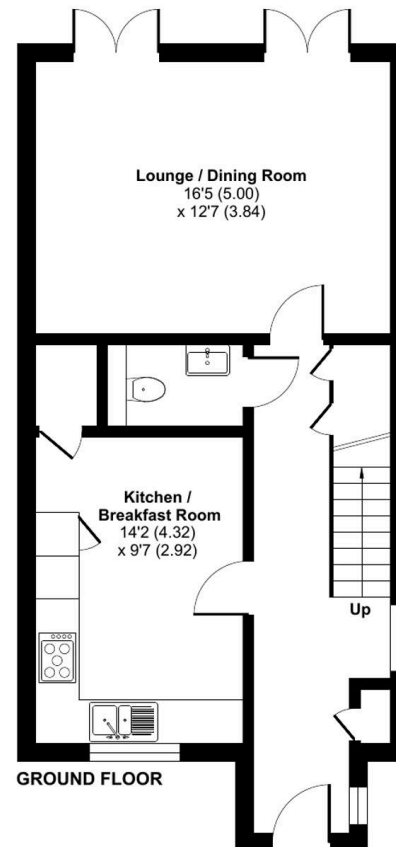
For identification only - Not to scale



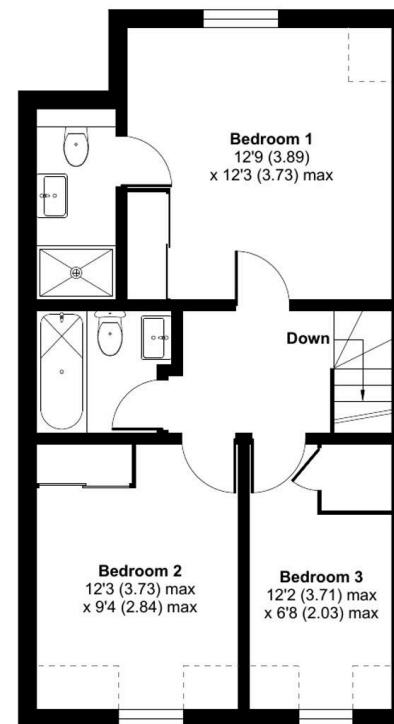
Denotes restricted  
head height



**GARAGE**



**GROUND FLOOR**



**FIRST FLOOR**