



Flat 29, 4 Littleworth Road, Esher
£2,250 pcm

DAVIES
PROPERTY PARTNERS



Flat 29

4 Littleworth Road, Esher

An impeccably presented first floor apartment offering two double bedrooms and a superior quality finish throughout.

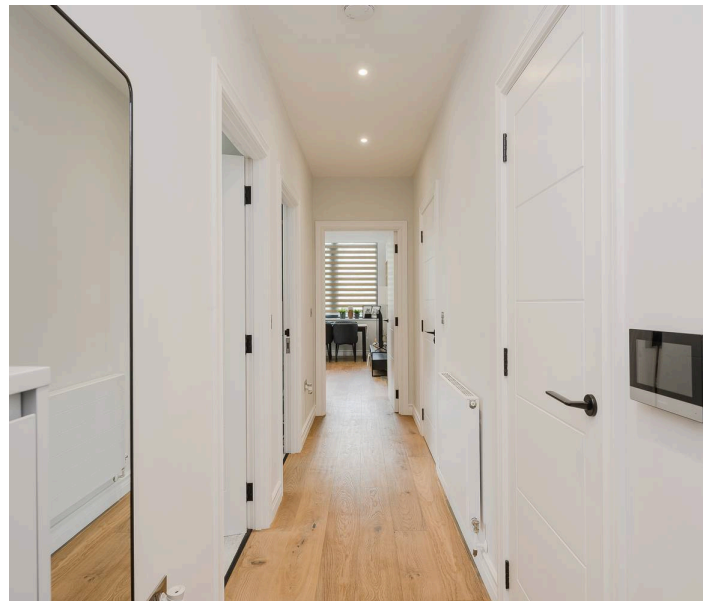
The beautiful apartment benefits from lots of natural light and is located broadly equidistant from central Esher and Claygate village. The accommodation consists of entrance hall, a bright, open-plan living / dining room and a contemporary fitted kitchen with integrated appliances. The flat also benefits from one allocated off-street parking space and is within a short walk of the train station in Claygate. EPC rating C.

Council Tax band: E

EPC Energy Efficiency Rating: C

EPC Environmental Impact Rating:

- Luxury modern apartment
- Concierge
- Open plan kitchen/reception room
- Beautifully appointed bathroom
- Allocated parking space
- Available part furnished from 5th May



Call us to arrange a viewing on (01372) 462323



Littleworth Road
Approx Gross Internal Area
First Floor = 65 Sq m 699 Sq Ft



First Floor

Viewmedia @ 2022
Viewmedia.co.uk

Whilst every attempt has been made to ensure the accuracy of this floor plan, measurements of doors, windows and rooms are approximate and no responsibility is taken for any error or omission. This illustration is for identification purpose only. Measured and drawn accordance with RICS guidelines. Not drawn to scale, unless stated. Dimensions shown are to the nearest 3" and are to the points indicated by the arrow heads.

DAVIES
PROPERTY PARTNERS