



17 Hayward Road, Thames Ditton  
£3,950 pcm

**DAVIES**  
PROPERTY PARTNERS

# 17 Hayward Road

Thames Ditton, Thames Ditton

A 5 bedroom, 3 bathroom, modern detached family home, ideally located for Thames Ditton, Esher, Surbiton and Kingston. EPC C

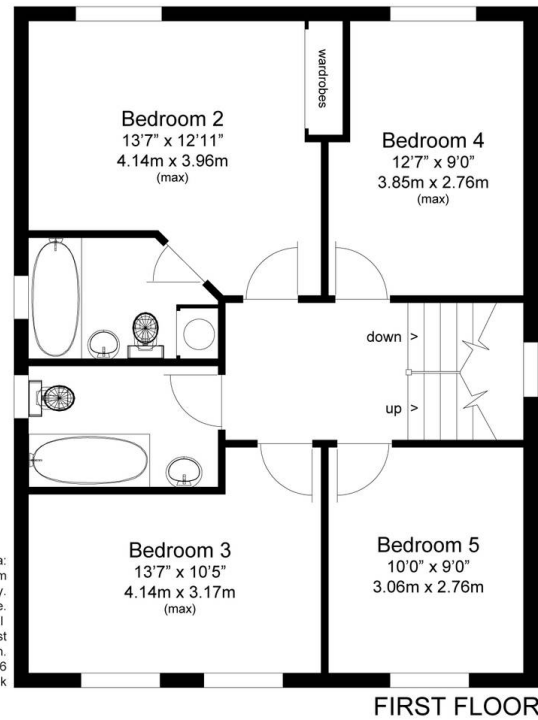
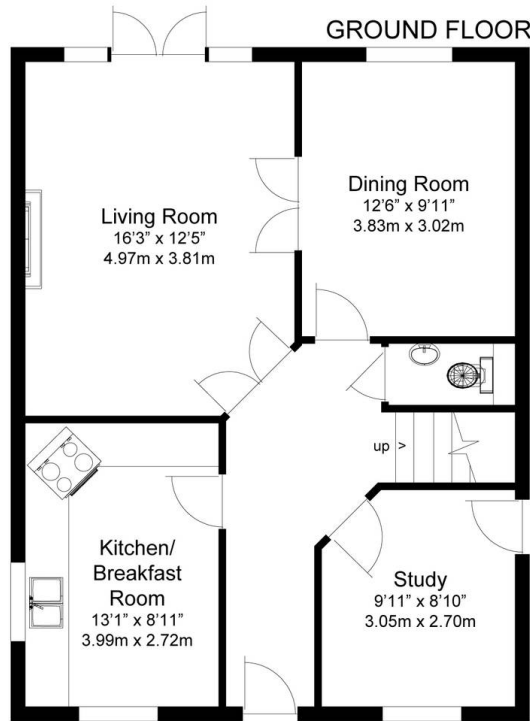
Council Tax band: G

Tenure: Freehold

- Modern detached house
- Available unfurnished from 8th October
- Living room, dining room and study
- Kitchen / breakfast room
- Cloakroom / WC
- Five bedrooms and three bathrooms
- Off street parking plus attached garage
- Enclosed rear garden of 35 feet x 36 feet







Approximate gross internal floorplan area:  
2049 sq.ft / 190 sq.m  
This plan is for layout guidance only.  
Not drawn to scale.  
Measurements are for general  
guidance only and must  
not be relied upon.  
Ref: GCL/0904-2746  
www.simplefloorplans.co.uk