



2a The Parade, Claygate
£1,595 pcm



2a The Parade

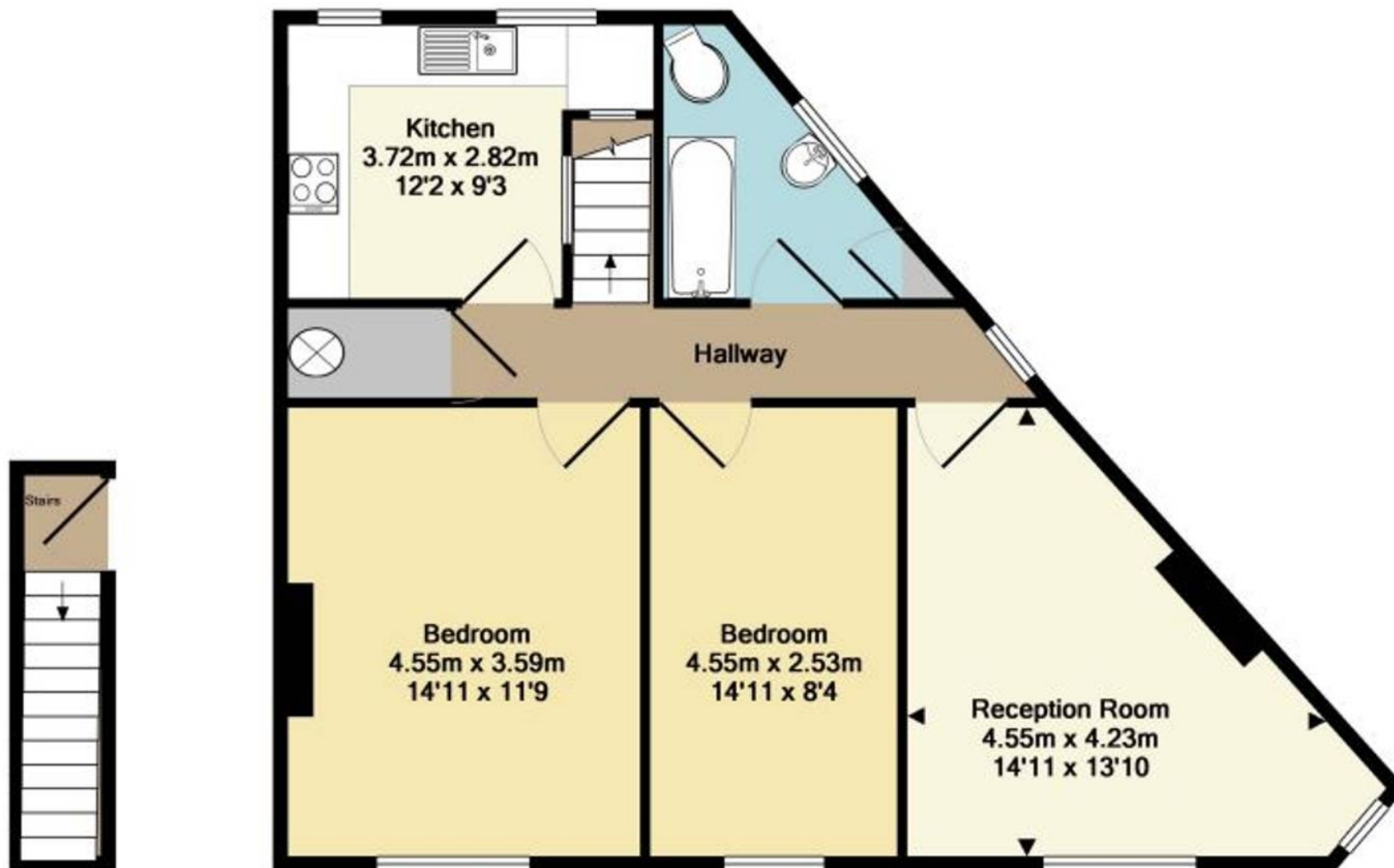
Claygate, Esher

An ideally located, two bedroom maisonette, occupying a really convenient position in the heart of the village and adjacent to all main shops and the train station.

- First floor maisonette
- Two double bedrooms
- Private garden
- Off street parking
- Central village location
- Unfurnished
- Available from 30th September







Entrance floor
 Approx. Floor
 Area 3.5 Sq.M.
 (38 Sq.Ft.)

1st floor
 Approx. Floor
 Area 65.2 Sq.M.
 (701 Sq.Ft.)

Total Approx. Floor Area 68.7 Sq.M. (739 Sq.Ft.)
 Measurements are approximate. Not to scale. Illustrative purposes only
 Made with Metropix ©2016