



10 Lavender Gate, Oxshott
£3,500 pcm

DAVIES
PROPERTY PARTNERS



10 Lavender Gate

Oxshott, Leatherhead

Located within a popular gated residential mews close to the centre of Oxshott this four bedroom home offers well balanced space both up and downstairs.

Downstairs has a beautiful reception room to the front of the house featuring a bay window, fire place and a Scandi style parquet wood floor, the room offers great space for all the family and the bonus of shelving and storage.

At the other end of the house is a brilliant kitchen breakfast room equipped with a good amount of high and low level fitted units and integrated appliances. This kitchen has plenty of room for dining with the added benefit of having access to the rear garden and deck via bi-folding doors perfect for indoor outdoor entertaining.

Off the entrance hallway there is also a third room perfect for your home office needs or additional playroom for the little ones.

Upstairs there are four bedrooms with the principle having both a dressing area and en-suite shower room, the remaining three share the well fitted modern family bathroom.

The rear garden has two great decked areas to follow the sun at alternate times of the day, a well crafted climbing frame and swing set and being completed with some storage at the side of the house.

Council Tax band: F

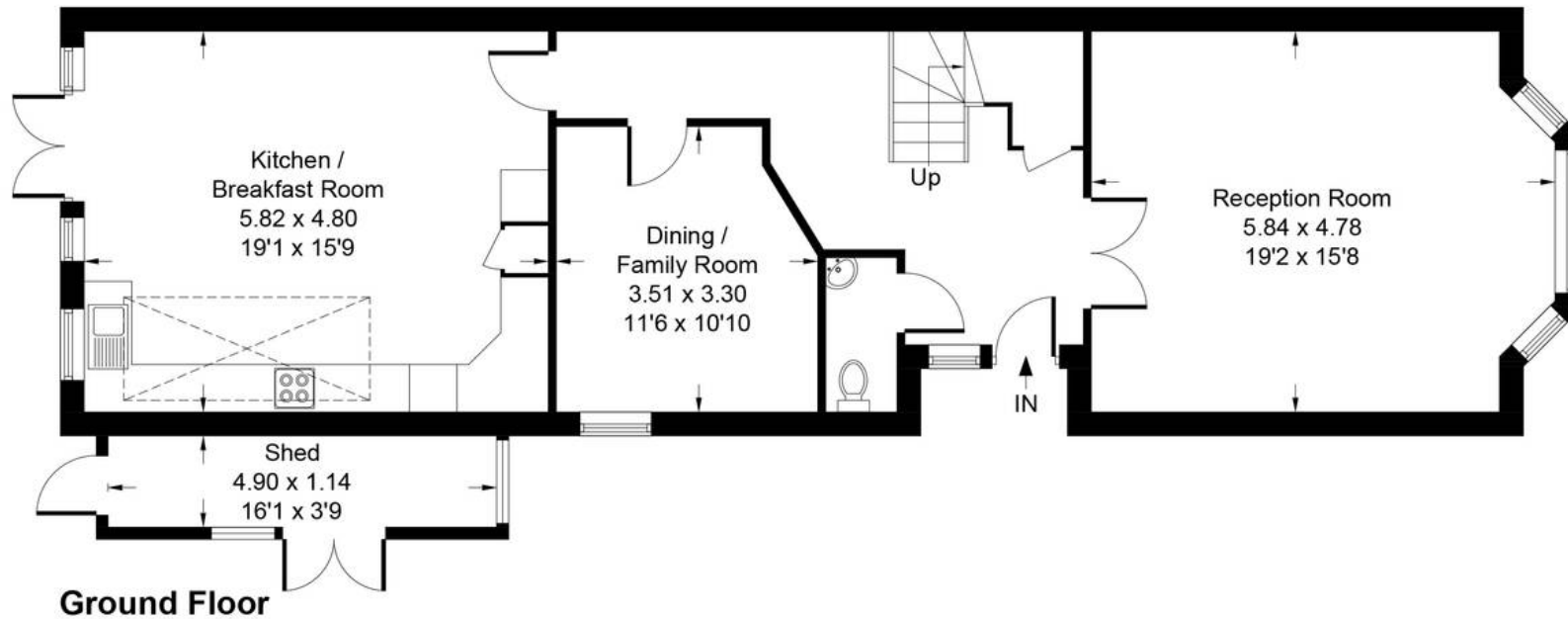
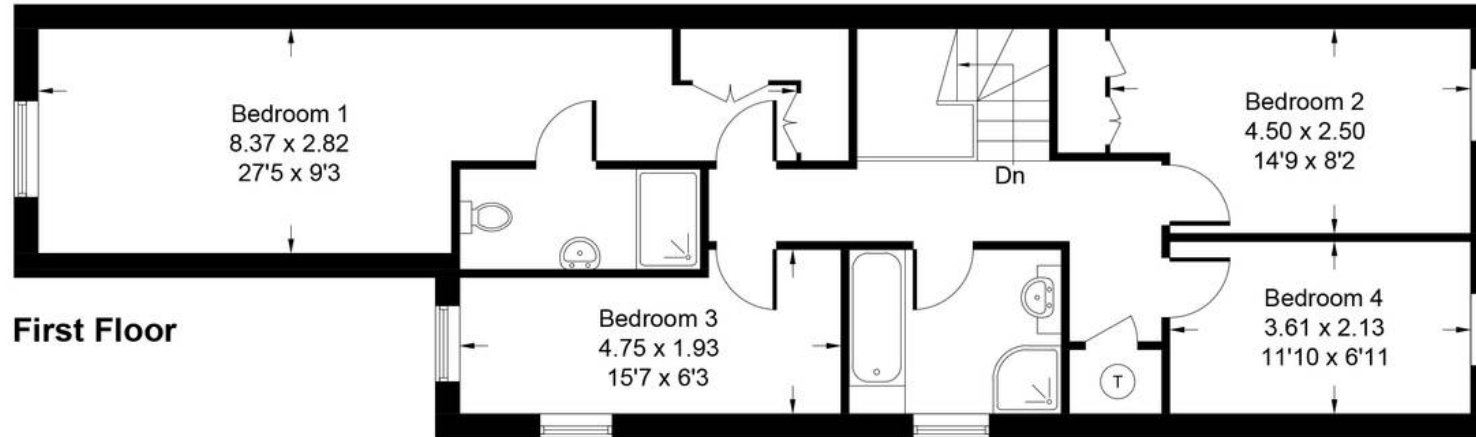


Lavender Gate, Oxshott, Leatherhead, Elmbridge, Surrey, KT22

Approximate Gross Internal Area = 164.4 sq m / 1770 sq ft

Shed = 5.6 sq m / 60 sq ft

Total = 170.0 sq m / 1830 sq ft



Floor plan produced in accordance with RICS Property Measurement Standards incorporating International Property Measurement Standards (IPMS2 Residential).

Produced for Grosvenor Surrey by IDENTIKA LTD