



1 Ruxley Ridge, Claygate
£7,000 pcm

1 Ruxley Ridge

Claygate, Esher

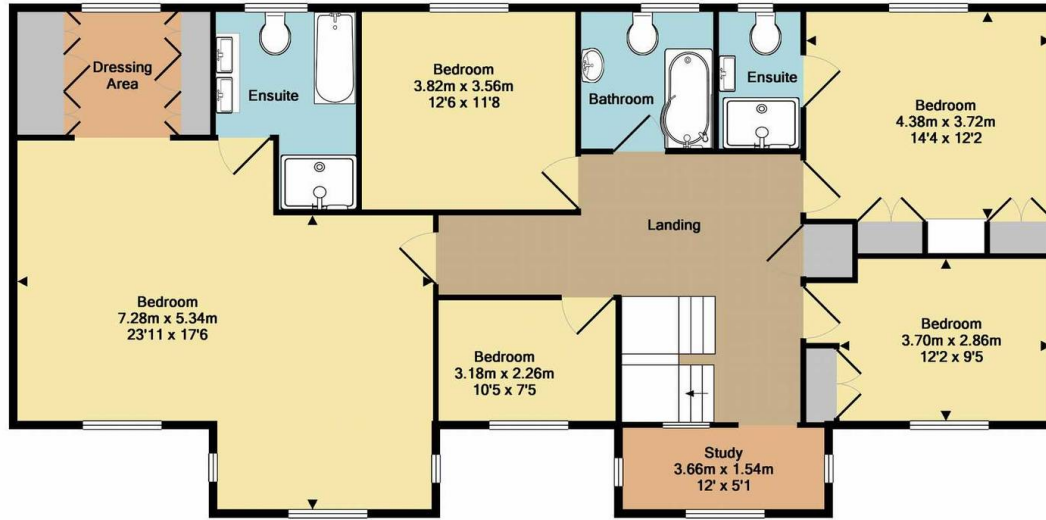
An imposing, Neo-Georgian detached family home, offering substantial five bedroom / 4 reception room accommodation and occupying a generous 0.42 acre overall plot. EPC C
Council Tax band: G

Tenure: Freehold

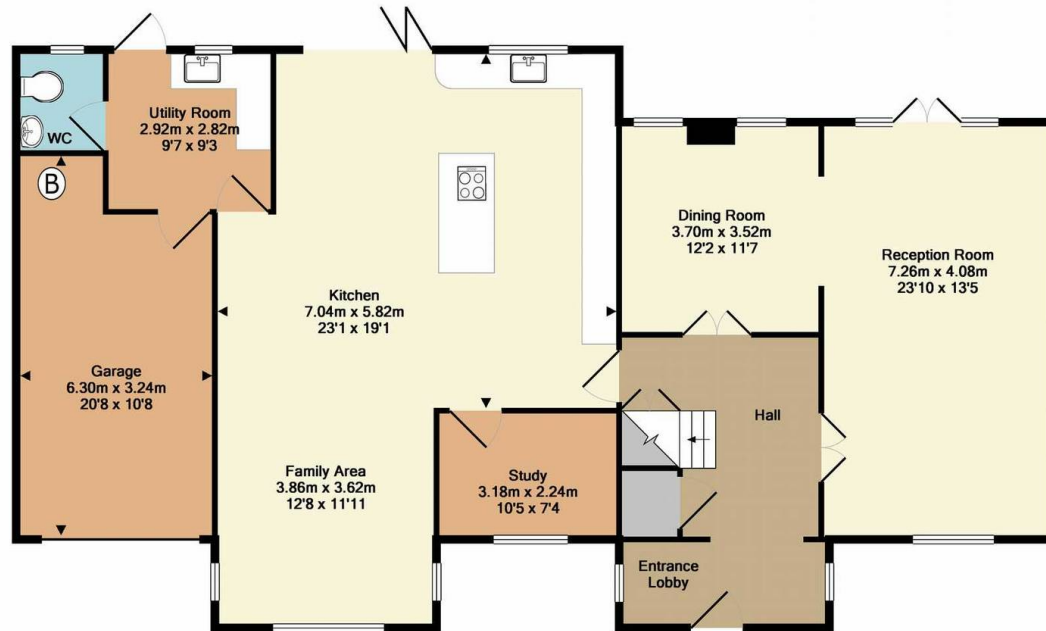
- Detached Neo-Georgian family home
- Available unfurnished from 20th September 2024
- 4 reception rooms
- Utility room and ground floor cloakroom / WC
- 5 bedrooms and 3 bathrooms (two en suite) plus principal dressing room
- Garage and extensive additional parking
- EPC C
- Established 0.24 acre mature gardens / plot







1st floor
Approx. Floor
Area 143.3 Sq.M.
(1543 Sq.Ft.)



Ground floor
Approx. Floor
Area 155.9 Sq.M.
(1678 Sq.Ft.)

Total Approx. Floor Area 299.2 Sq.M. (3221 Sq.Ft.)
Measurements are approximate. Not to scale. Illustrative purposes only
Made with Metropix ©2015