



Flat 29, 4 Littleworth Road, Esher
£2,250 pcm

DAVIES
PROPERTY PARTNERS

Flat 29

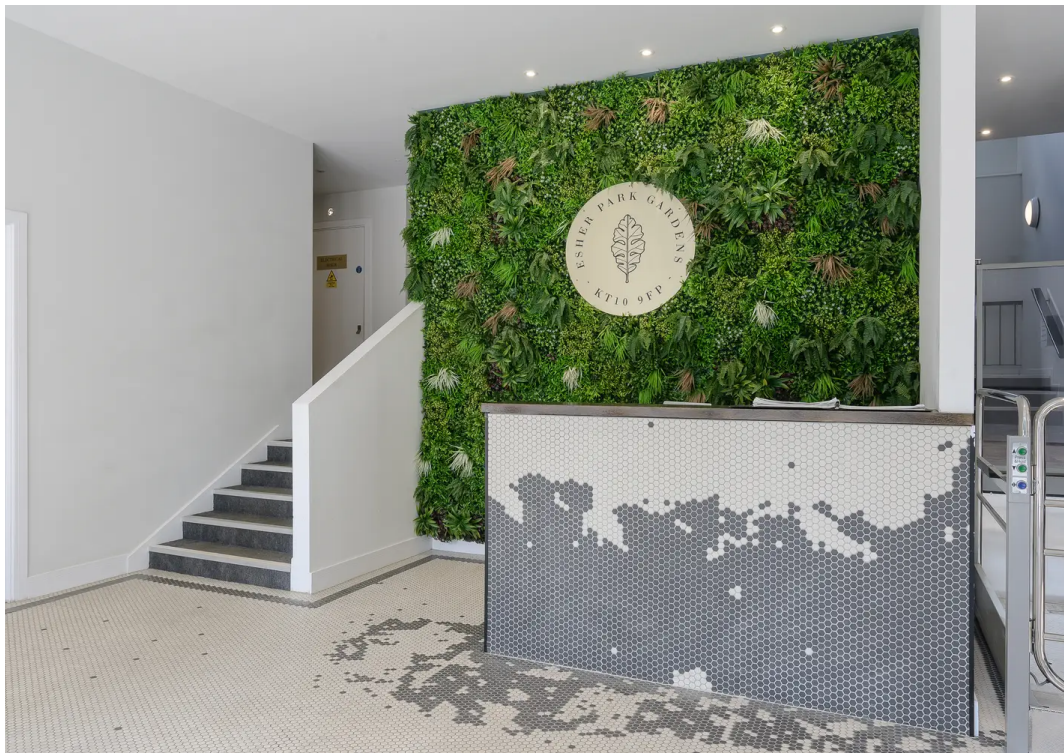
4 Littleworth Road, Esher

A recently constructed and impeccably presented, two double bedroom first floor luxury apartment. EPC rating C.

Council Tax band: E

- Luxury modern apartment
- Available FULLY FURNISHED from 16th July
- Concierge
- Open plan kitchen/reception room
- Two double bedrooms
- Beautifully appointed bathroom
- Allocated parking space





Littleworth Road
Approx Gross Internal Area
First Floor = 65 Sq m 699 Sq Ft



First Floor

Viewmedia @ 2022
Viewmedia.co.uk

Whilst every attempt has been made to ensure the accuracy of this floor plan, measurements of doors, windows and rooms are approximate and no responsibility is taken for any error or omission. This illustration is for identification purpose only. Measured and drawn accordance with RICS guidelines. Not drawn to scale, unless stated. Dimensions shown are to the nearest 3" and are to the points indicated by the arrow heads.