



29 Cumberland Drive, Esher
£3,100 pcm

29 Cumberland Drive

Esher, Esher

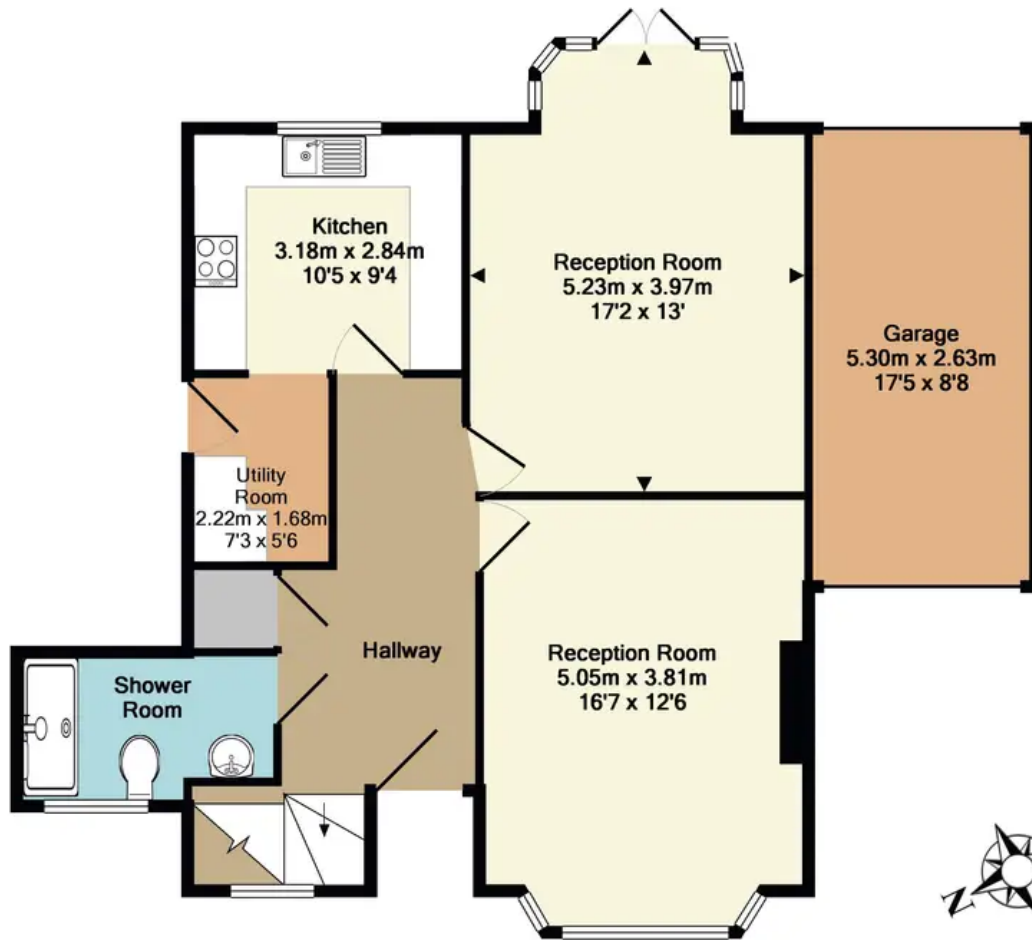
A spacious 3 double bedroom detached family home, ideally located for Hinchley Wood school catchment.

Council Tax band: G

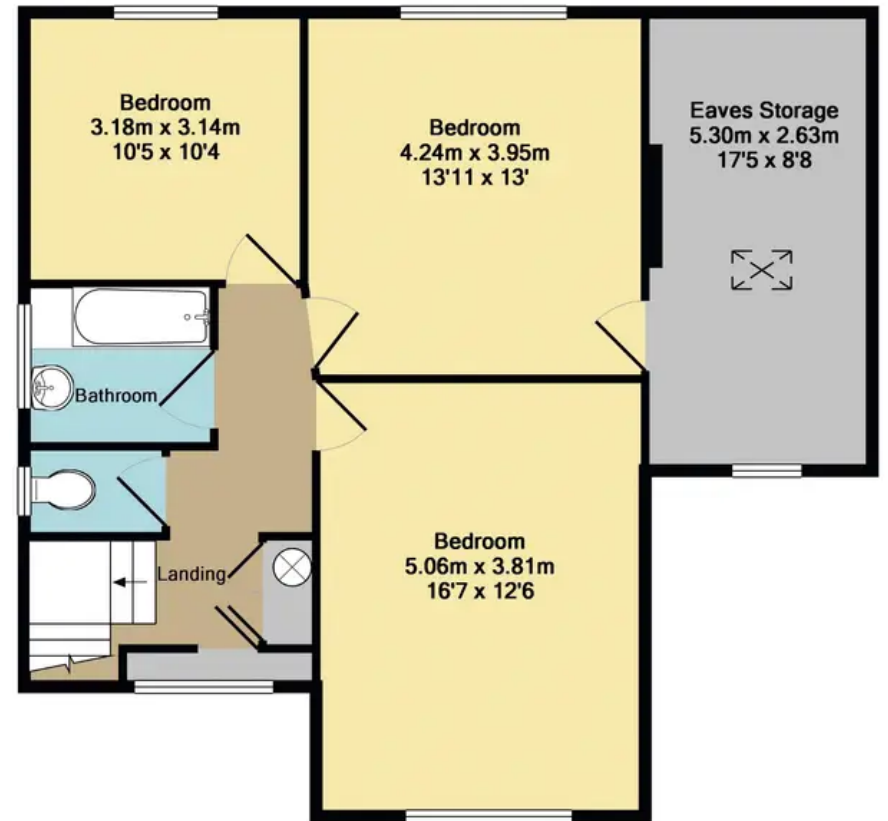
- Detached house
- Available from 24th April
- Three bedrooms
- Two bathrooms
- Unfurnished
- Close to local schools and amenities
- Off street parking







Ground floor
 Approx. Floor
 Area 82.4 Sq.M.
 (887 Sq.Ft.)



1st floor
 Approx. Floor
 Area 75.5 Sq.M.
 (812 Sq.Ft.)

Total Approx. Floor Area 157.8 Sq.M. (1699 Sq.Ft.)
 Measurements are approximate. Not to scale. Illustrative purposes only
 Made with Metropix ©2018