

King Street West,
Stockport



Platform



73 one and two
bedroom apartments
available with Rent to Buy

Step up into your brand new place

We're bridging the gap between renting and home ownership for first-time buyers, making things as easy as **1, 2, 3 - rent, live, buy.**

This is your Platform.

Rent to buy. You'll rent at a discounted market rate giving you the chance to save for a deposit to buy your apartment in the future.

Live minutes from Stockport town centre. And when you want to travel further afield, nearby bus and train stations keep you connected.

Buy when you're ready. Platform is the supported route to home ownership, and your step-by-step way to buying your own apartment.

Get excited. We are.





Platform



Why Platform?

How Platform came to be

The name Platform derives the unique opportunity to rent at a discounted market rate acting as a platform to save for a deposit to buy your apartment in the future. Along with its location next to Stockport train station allowing you to get to Manchester in eight minutes and London in under two hours.

Our thirteen apartment types have been thoughtfully named after iconic local landmarks, celebrating the area's vibrant past and promising future. Each name has been carefully chosen to reflect a piece of Stockport's rich heritage and unique character.

1 bedroom Apartments

- ① The Viaduct
- ② The Underbank
- ③ The Heaton
- ④ The Bramhall

2 bedroom Apartments

- ⑤ The Pyramid
- ⑥ The Houldsworth
- ⑦ The Elizabeth
- ⑧ The Alfred
- ⑨ The Station
- ⑩ The Tiviot
- ⑪ The Wellington
- ⑫ The Edgeley
- ⑬ The Riverbank



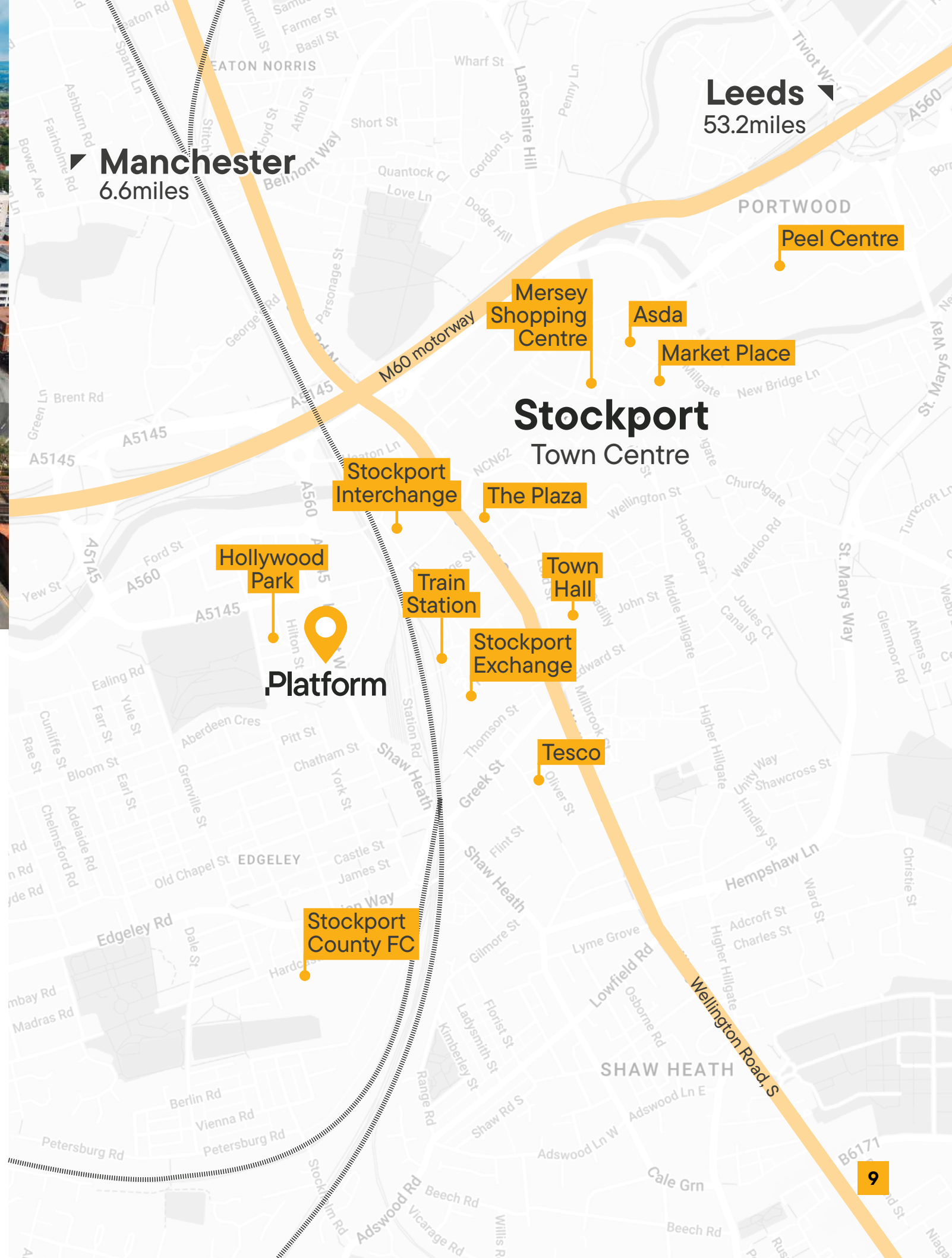
“The new Berlin”

You’ve got so much to explore around here. From mainstream to independent, it’s easy to find a gem around the corner.

Bars, markets, and museums are just part of what makes Stockport a great place to live, with national transport links keeping you connected across the country and further afield if and when you want it.

How about taking a trip to the Market Hall to see what makes Stockport so unique? Live performances and the distinctive hospitality of Foodie Friday supporting venues, like Bakers Vault, Angel Inn, Threat Bar, and many more.





Anything, anywhere, whenever you'd like

For anything local, buses are regular and reliable, and even though Platform's already got you minutes from the centre of town, The Bee Network gets you there even quicker. For places outside Stockport, you're covered too. You're less than 10 minutes from the centre of Manchester by train, and could be at the airport in 15 minutes if you drive. Trips to London are possible in less than two hours, making days out to the capital quick and easy.



Stockport train station - 5 mins
Stockport Interchange - 6 mins
The Plaza - 7 mins
Sainsbury's Local - 9 mins
Stockport Market Place - 13 mins
Stockport County FC - 13 mins



Manchester - 8 mins
Wilmslow - 8 mins
Leeds - 1 hr 20 mins
Liverpool - 1 hr 20 mins
Birmingham - 1 hr 25 mins
London - 2 hrs



What is Rent to Buy?

The rent-to-buy scheme is made so you can 'try before you buy', supporting you while you find your way to own.

But there's no rush, and you don't have to make the decision next week. At Platform, you won't even need to make it next year. The whole point is easing you into the process one step at a time.



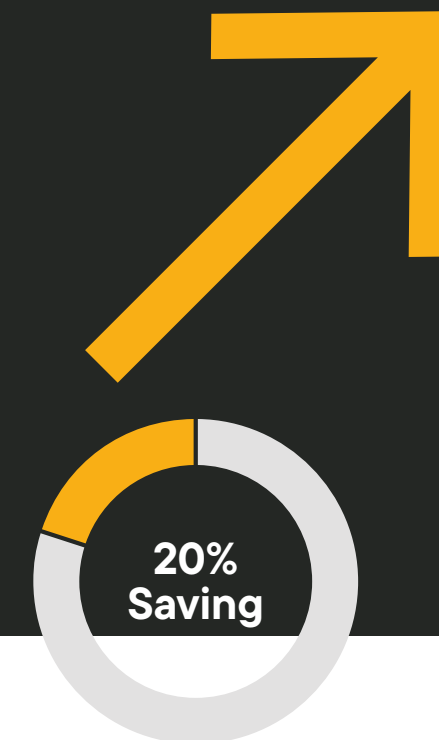
Step up into your brand new place

How much can I save with Rent to Buy?

With Rent to Buy, you can rent your home at an affordable discounted rate (usually up to 20% lower than average local market rents) for up to five years while you save to buy all of your apartment or a share of it in the future.

That 20% goes straight back into your savings, meaning you're building up your deposit from day one.

Based on this, here's an example of how much you could save:



Market rate:
£1,000 a month

Rent to buy:
£800 a month

Saving:
£200 a month

Applicants must:

- Be first-time buyers, unless they are returning to the market following a personal incident such as a relationship breakdown which has meant the applicant has needed to leave their home.
- Be working, and intending to buy their own home in the future.
- Be unable to purchase right now via the open market.
- Be able to pay a rental deposit equivalent to a month's rent.
- Have a household income of less than £80,000 per year



Total saved after five years:

£12,000

(plus any interest you've made)

This £12,000 could then be used as a deposit to purchase your apartment

Apartment specification

It's all in the detail at Platform

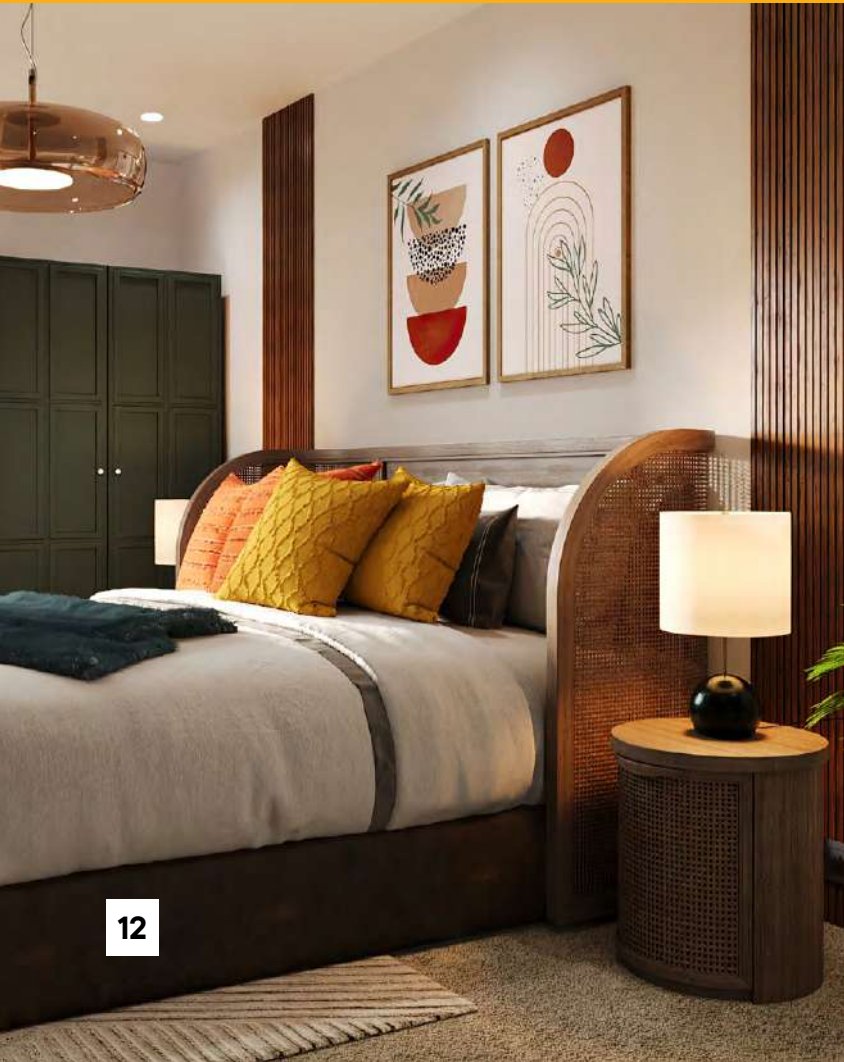
Brilliant white finish walls, integrated fridge-freezer, and chrome heated towel rails in the bathroom.

Your path to homeownership starts as soon as you enter your front door.



Kitchen

- Contemporary fitted Symphony 'Woodbury' kitchens
- Electric oven, hob, & extractor hood in stainless steel finish
- Integrated fridge/freezer
- Stainless steel bowl & half sink
- Plumbing for washing machine
- Glass splash back to hob area
- Chrome sockets
- Karndean vinyl flooring



Internal features

- Brilliant white finish to walls
- Carpets to hallway, living area & bedrooms
- Polished steel ironmongery to doors
- Patio doors to balconies
- LED downlights to kitchen & bathrooms
- TV sockets to master bedroom & lounge
- High speed broadband ready to connect*



External features

- Private landscaped roof terrace
- 16 allocated parking spaces
- EV charging points to all parking spaces
- Private balconies to selected apartments

*Broadband is not included in monthly rent, accounts are to be set up independently



Bathroom

- Contemporary white bathroom fittings
- Porcelanosa wall tiles to bathroom
- Chrome heated towel rails to bathroom
- Thermostatic shower
- Karndean vinyl flooring
- En-suite shower to selected apartments

Disclaimer
The details in this brochure are subject to change and do not constitute part of a contract. You must satisfy yourself by inspection or otherwise as to the accuracy of information given in this brochure. Images are provided for illustration purposes only and may differ to the homes available; please ask a lettings advisor for more information.



The Viaduct

One bedroom apartment
with balcony



Room Type	Size (m)	Size (ft)
Kitchen	1.77 x 2.44	5.80 x 8.01
Living / Dining	4.72 x 3.40	15.49 x 11.15
Master Bedroom	4.33 x 3.43	14.21 x 11.25
Bathroom	2.07 x 1.94	6.79 x 6.36

Disclaimer
The details provided are subject to change and do not constitute part of a contract. Dimensions are for guidance only and you must satisfy yourself by inspection or otherwise as to the accuracy of information given. Please ask a lettings advisor for more information.

Apartments

Third Floor

- 70 71 41
44 45

Second Floor

- 61 62 30
33 34

First Floor

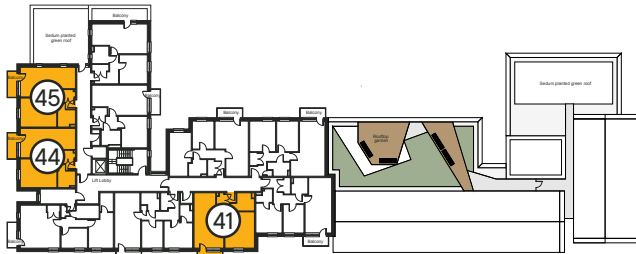
- 52 53 19
22 23

Ground Floor

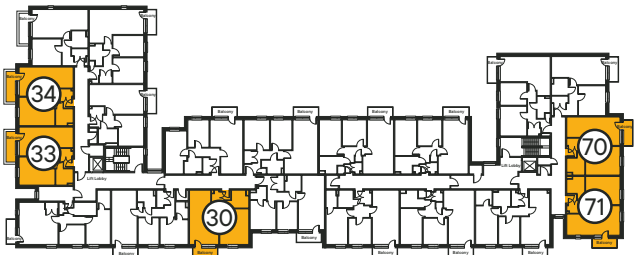
- 46 47 8
10 11

Lower Ground

- 2

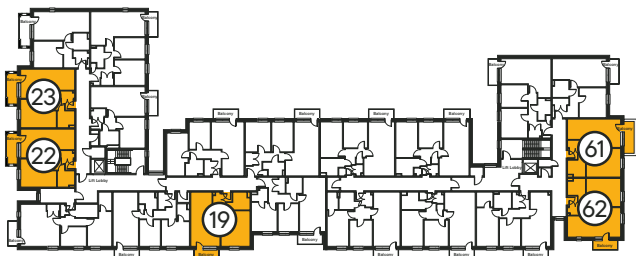


Third Floor



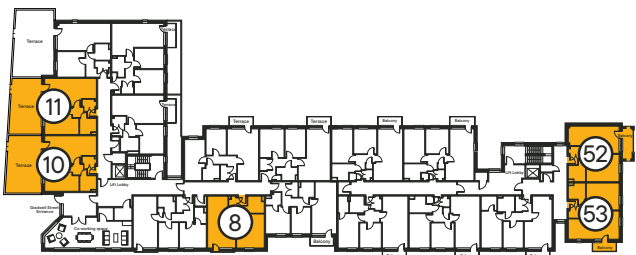
Second Floor

Third Floor



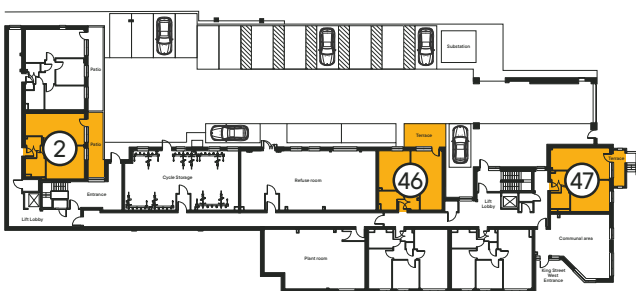
First Floor

Second Floor



Ground Floor

First Floor



Lower Ground

Ground Floor



The Underbank

One bedroom apartment
with balcony



Room Type	Size (m)	Size (ft)
Kitchen	2.05 x 2.53	6.73 x 8.30
Living / Dining	4.71 x 3.43	15.45 x 11.25
Master Bedroom	3.55 x 3.21	11.65 x 10.53
Bathroom	1.95 x 2.05	6.40 x 6.73

Disclaimer
The details provided are subject to change and do not constitute part of a contract. Dimensions are for guidance only and you must satisfy yourself by inspection or otherwise as to the accuracy of information given. Please ask a lettings advisor for more information.

Apartments

Third Floor

69

Second Floor

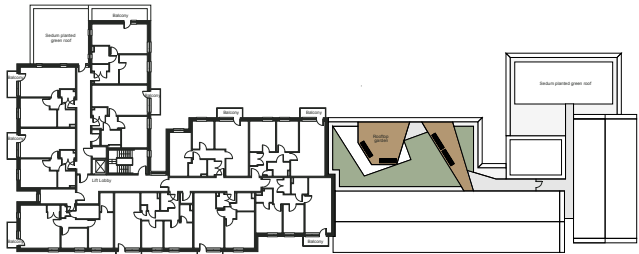
60 35

First Floor

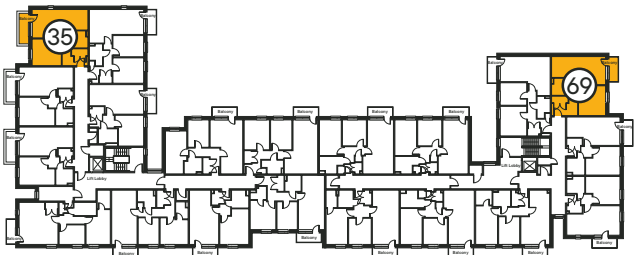
24

Ground Floor

12

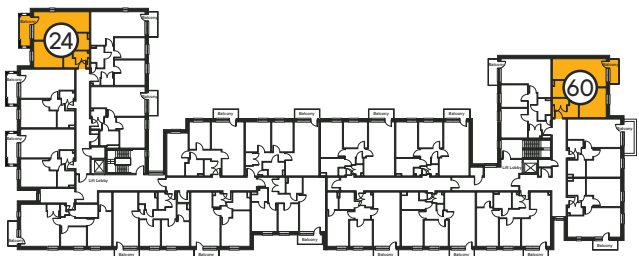


Third Floor



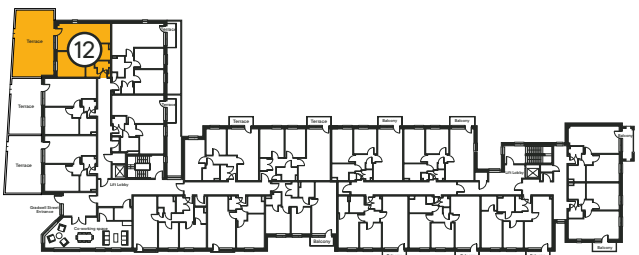
Second Floor

Third Floor



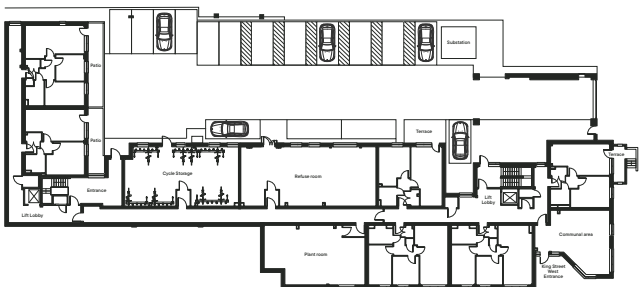
First Floor

Second Floor



Ground Floor

First Floor



Lower Ground

Ground Floor



The Heaton

One bedroom apartment
with balcony



Room Type	Size (m)	Size (ft)
Kitchen	1.9 x 2.55	6.23 x 8.36
Living / Dining	4.75 x 3.63	15.58 x 11.9
Master Bedroom	3.51 x 3.78	11.51 x 12.4
Bathroom	2.35 x 1.9	7.7 x 6.23

Disclaimer
The details provided are subject to change and do not constitute part of a contract. Dimensions are for guidance only and you must satisfy yourself by inspection or otherwise as to the accuracy of information given. Please ask a lettings advisor for more information.

Apartments

Third Floor

37

Second Floor

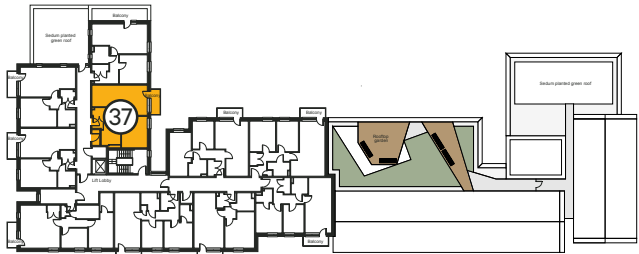
26

First Floor

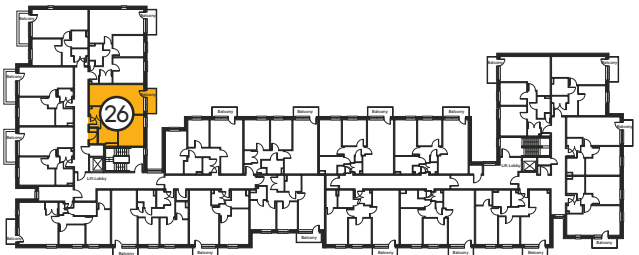
15

Ground Floor

4

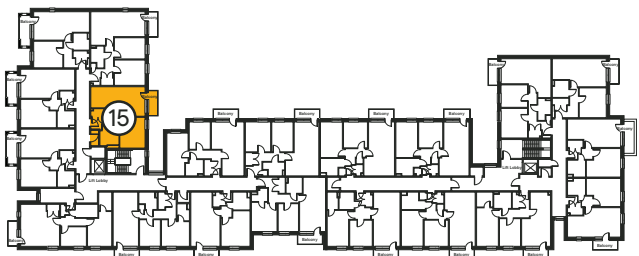


Third Floor



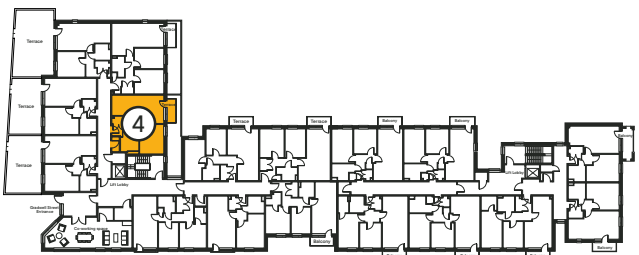
Second Floor

Third Floor



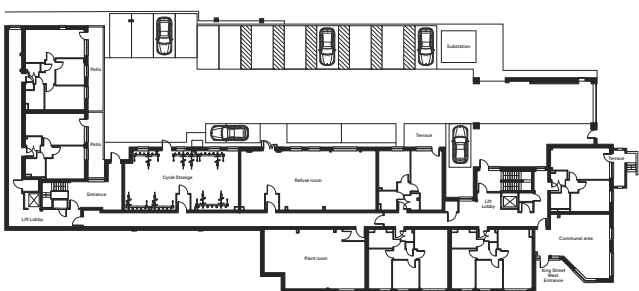
First Floor

Second Floor



Ground Floor

First Floor



Lower Ground

Ground Floor



The Bramhall

One bedroom apartment
with balcony

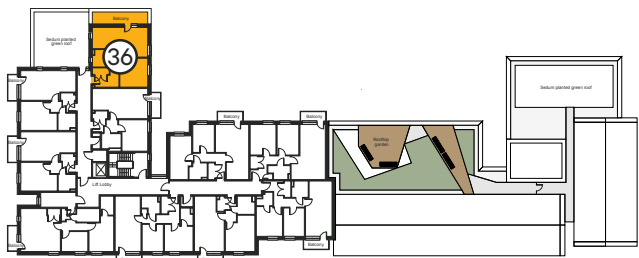


Room Type	Size (m)	Size (ft)
Kitchen	2.06 x 2.53	6.75 x 8.3
Living / Dining	4.53 x 3.55	14.86 x 11.64
Master Bedroom	3.37 x 3.49	11.05 x 11.45
Bathroom	2.0 x 2.07	6.56 x 6.79

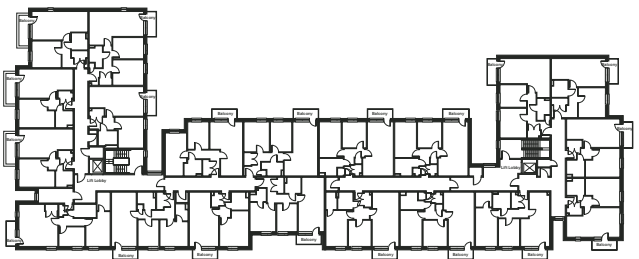
Disclaimer
The details provided are subject to change and do not constitute part of a contract. Dimensions are for guidance only and you must satisfy yourself by inspection or otherwise as to the accuracy of information given. Please ask a lettings advisor for more information.

Apartments

Third Floor
36

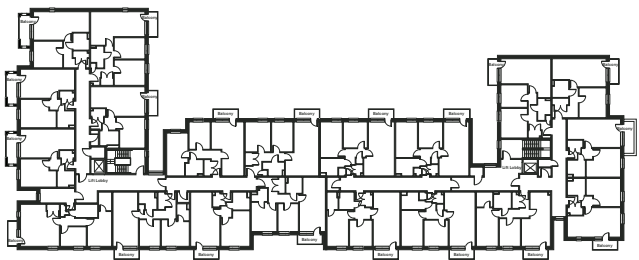


Third Floor



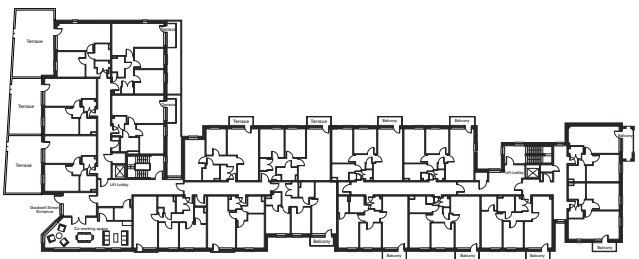
Second Floor

Third Floor



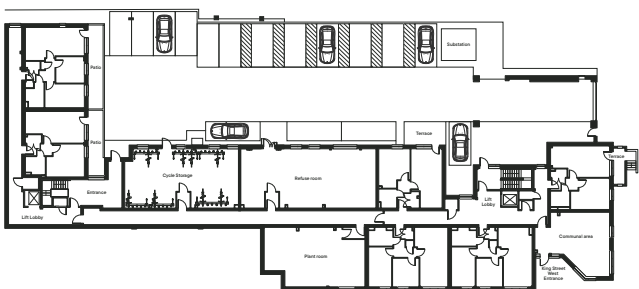
First Floor

Second Floor



Ground Floor

First Floor



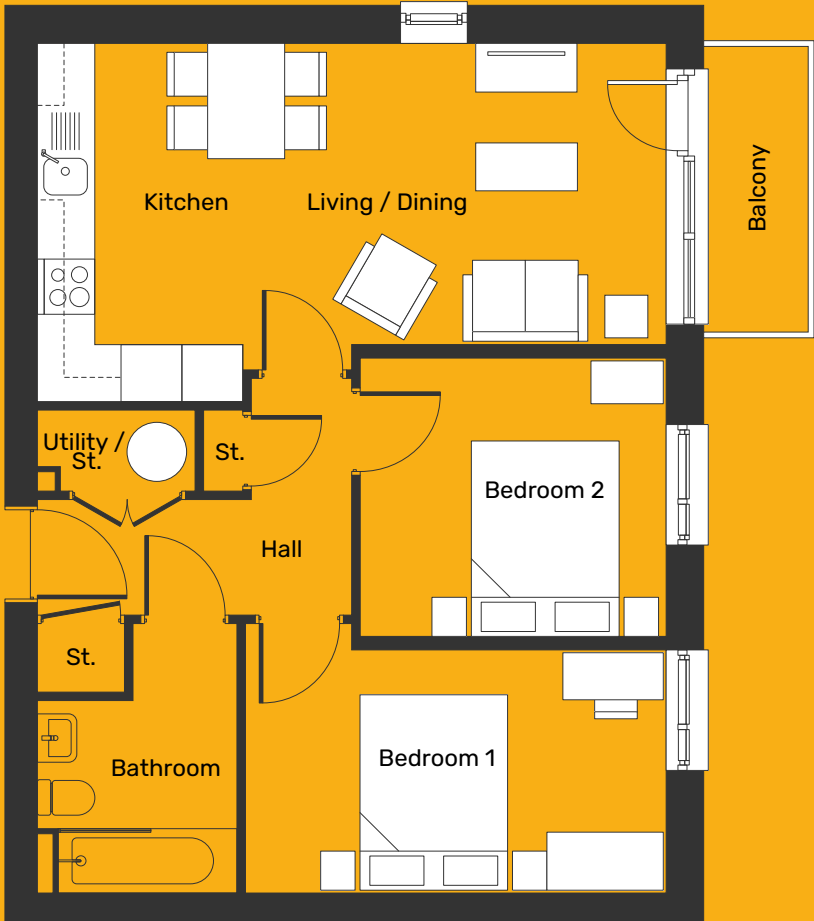
Lower Ground

Ground Floor



The Pyramid

Two bedroom apartment
with balcony



Room Type	Size (m)	Size (ft)
Kitchen	2.14 x 3.74	7.02 x 12.27
Living / Dining	4.39 x 3.14	14.4 x 10.3
Master Bedroom	4.36 x 2.54	14.3 x 8.33
Second Bedroom	3.22 x 2.91	10.56 x 9.54
Bathroom	2.08 x 2.82	6.82 x 9.25

Disclaimer
The details provided are subject to change and do not constitute part of a contract. Dimensions are for guidance only and you must satisfy yourself by inspection or otherwise as to the accuracy of information given. Please ask a lettings advisor for more information.

Apartments

Third Floor

- 66 67 73
50 51 55

Second Floor

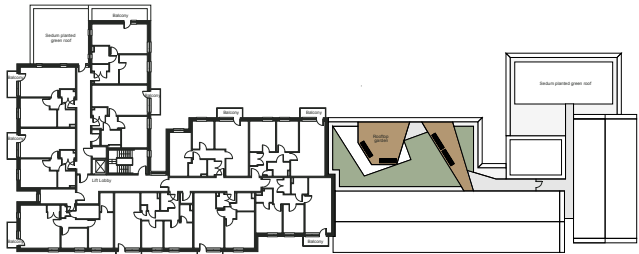
- 57 58 64

Ground Floor

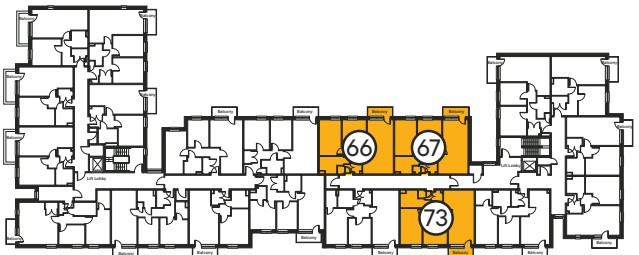
- 48 49

Lower Ground

- 1

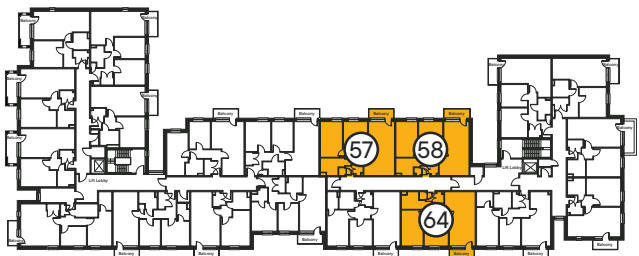


Third Floor



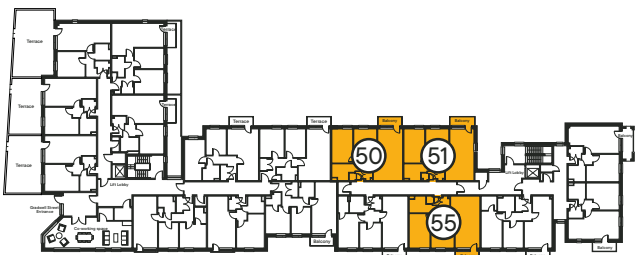
Second Floor

Third Floor



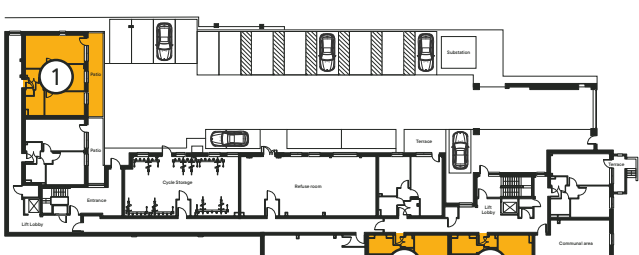
First Floor

Second Floor



Ground Floor

First Floor



Lower Ground

Ground Floor



The Houldsworth

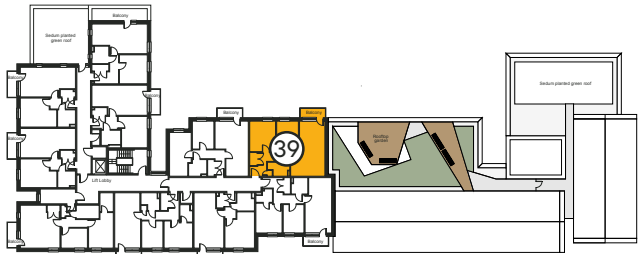
Two bedroom apartment
with balcony



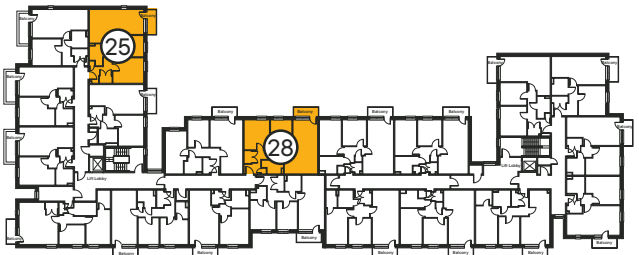
Room Type	Size (m)	Size (ft)
Kitchen	2.75 x 4.09	9.02 x 13.41
Living / Dining	3.83 x 3.01	12.56 x 9.87
Master Bedroom	3.73 x 3.06	12.23 x 10.03
Second Bedroom	3.73 x 2.56	12.23 x 8.39
Bathroom	1.6 x 2.65	5.24 x 8.69

Disclaimer
The details provided are subject to change and do not constitute part of a contract. Dimensions are for guidance only and you must satisfy yourself by inspection or otherwise as to the accuracy of information given. Please ask a lettings advisor for more information.

Apartments

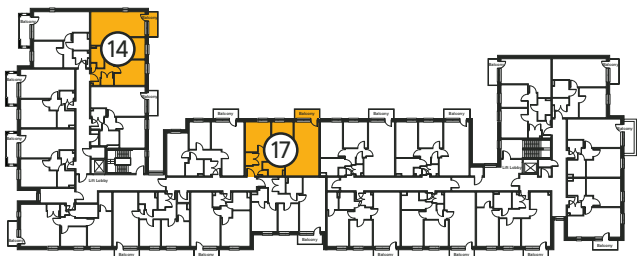


Third Floor



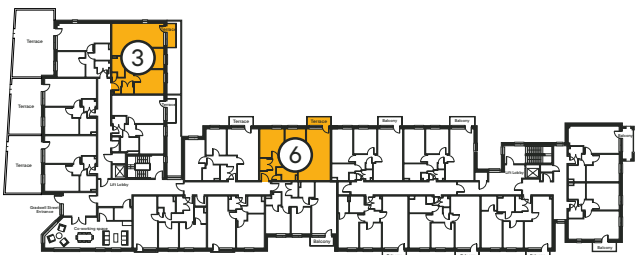
Second Floor

Third Floor



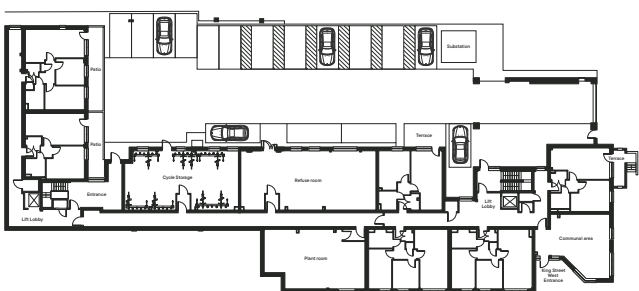
First Floor

Second Floor



Ground Floor

First Floor



Lower Ground

Ground Floor

Third Floor

39

Second Floor

25

28

First Floor

14

17

Ground Floor

3

6



The Elizabeth

Two bedroom apartment
with balcony



Room Type	Size (m)	Size (ft)
Kitchen	2.66 x 2.20	8.72 x 7.21
Living / Dining	3.95 x 4.34	12.95 x 14.23
Master Bedroom	2.55 x 5.19	8.36 x 17.02
Second Bedroom	2.55 x 3.33	8.36 x 10.92
Bathroom	2.15 x 1.97	7.05 x 6.46

Disclaimer
The details provided are subject to change and do not constitute part of a contract. Dimensions are for guidance only and you must satisfy yourself by inspection or otherwise as to the accuracy of information given. Please ask a lettings advisor for more information.

Apartments

Third Floor

38

Second Floor

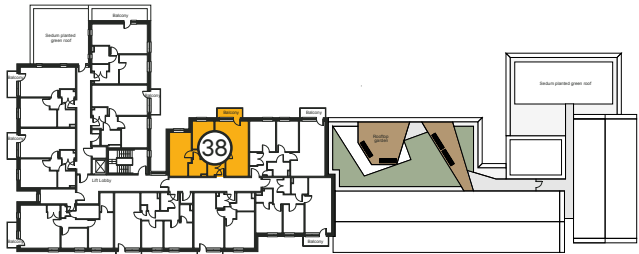
27

First Floor

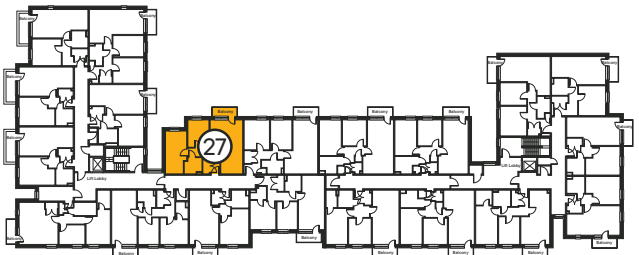
16

Ground Floor

5

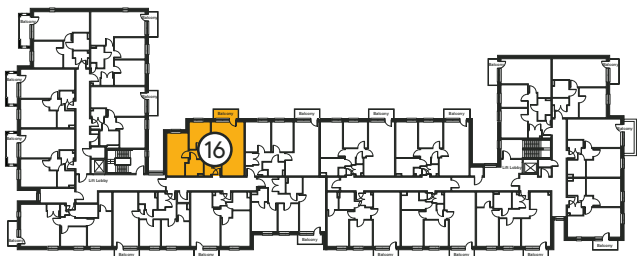


Third Floor



Second Floor

Third Floor



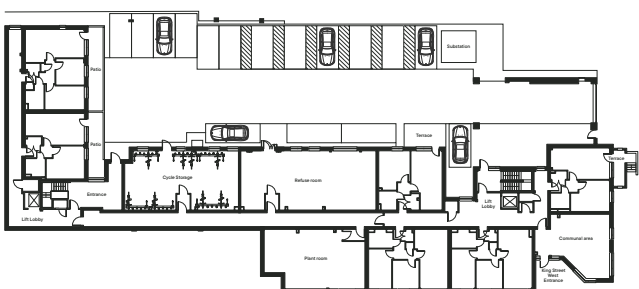
First Floor

Second Floor



Ground Floor

First Floor



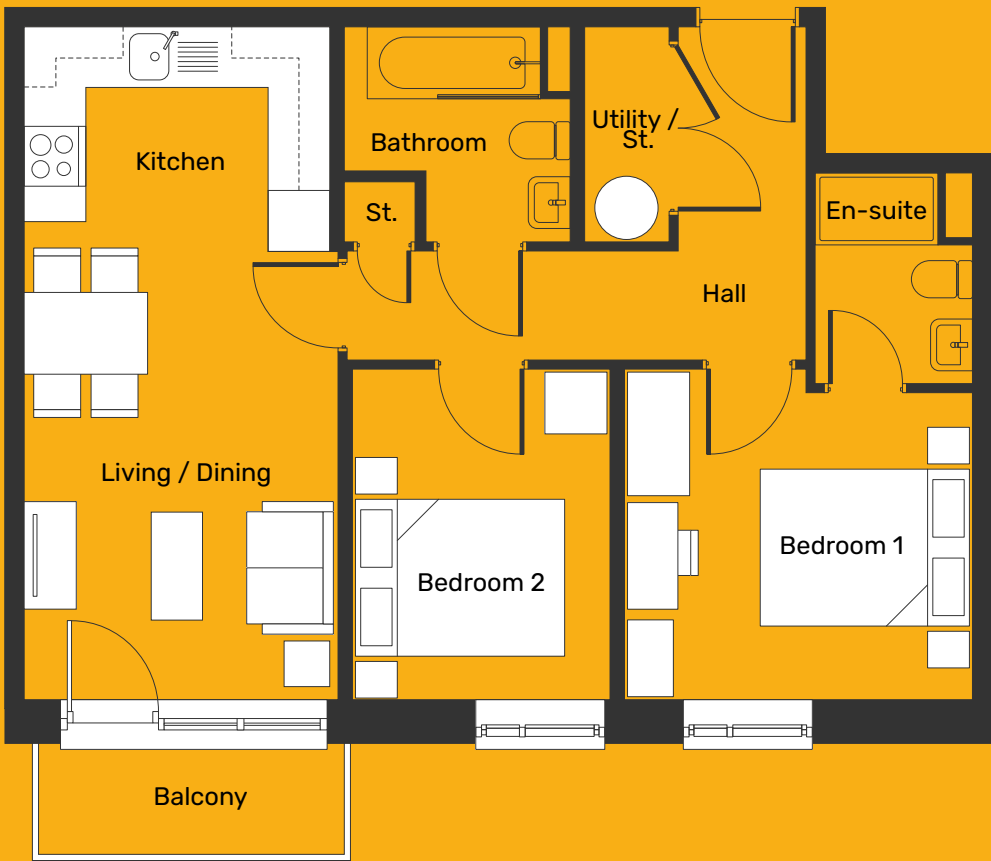
Lower Ground

Ground Floor



The Alfred

Two bedroom apartment
with balcony and en-suite



Room Type	Size (m)	Size (ft)
Kitchen	2.98 x 1.9	9.77 x 6.23
Living / Dining	3.05 x 4.67	10.0 x 15.32
Master Bedroom	3.39 x 3.23	11.12 x 10.59
En-Suite	1.54 x 2.05	5.05 x 6.72
Second Bedroom	2.51 x 3.23	8.23 x 10.59
Bathroom	2.2 x 2.2	7.21 x 7.21

Disclaimer
The details provided are subject to change and do not constitute part of a contract. Dimensions are for guidance only and you must satisfy yourself by inspection or otherwise as to the accuracy of information given. Please ask a lettings advisor for more information.

Apartments

Third Floor

42

Second Floor

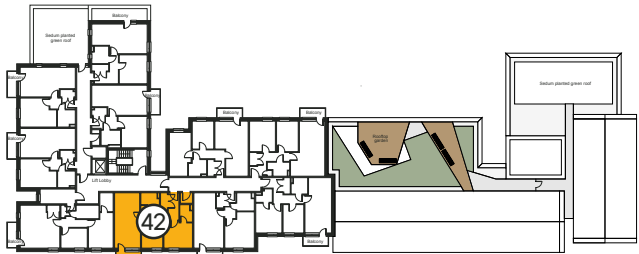
31

First Floor

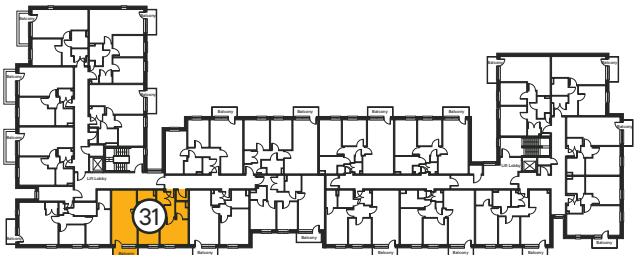
20

Ground Floor

9

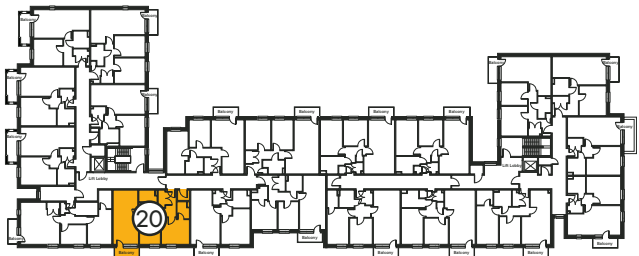


Third Floor



Second Floor

Third Floor



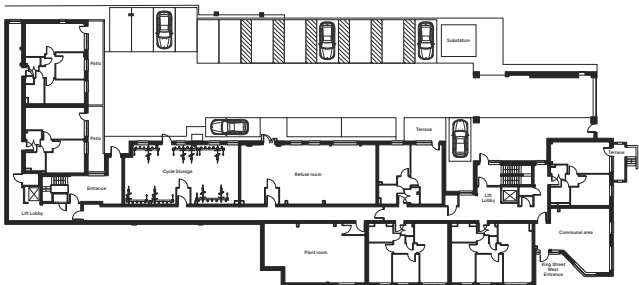
First Floor

Second Floor



Ground Floor

First Floor



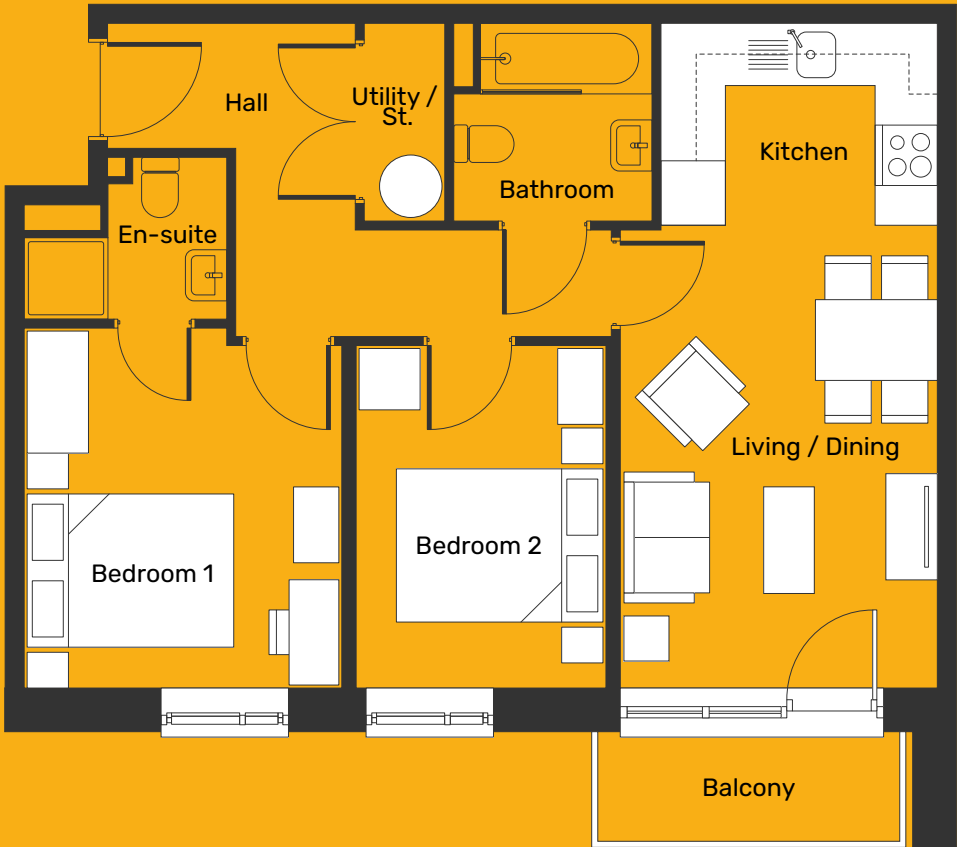
Lower Ground

Ground Floor



The Station

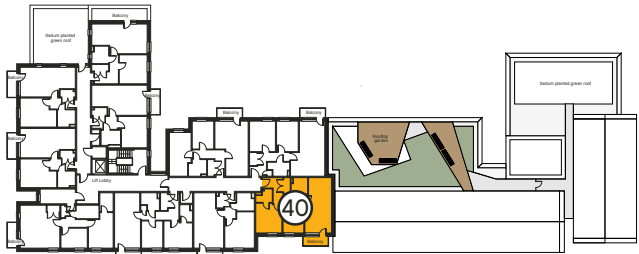
Two bedroom apartment
with balcony and en-suite



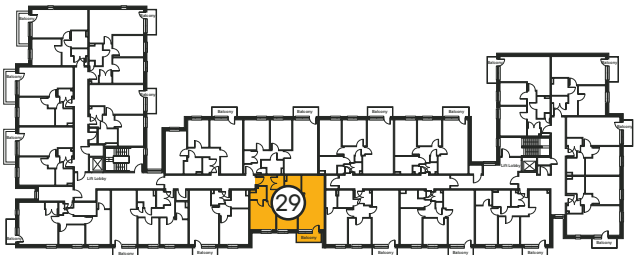
Room Type	Size (m)	Size (ft)
Kitchen	2.7 x 1.98	8.85 x 6.49
Living / Dining	3.15 x 4.57	10.33 x 14.99
Master Bedroom	3.14 x 3.56	10.30 x 11.67
En-Suite	1.36 x 1.58	4.46 x 5.18
Second Bedroom	2.45 x 3.38	8.03 x 11.08
Bathroom	1.95 x 1.96	6.39 x 6.43

Disclaimer
The details provided are subject to change and do not constitute part of a contract. Dimensions are for guidance only and you must satisfy yourself by inspection or otherwise as to the accuracy of information given. Please ask a lettings advisor for more information.

Apartments

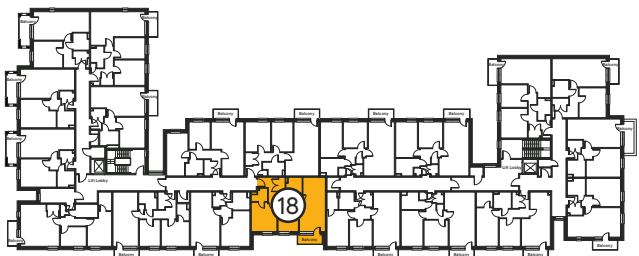


Third Floor



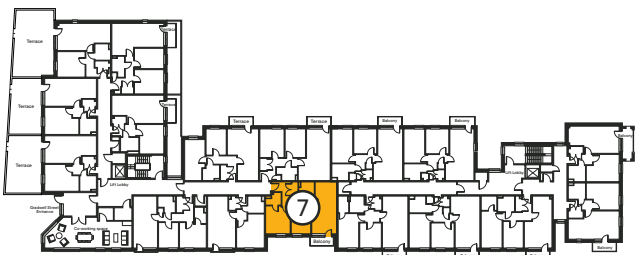
Second Floor

Third Floor



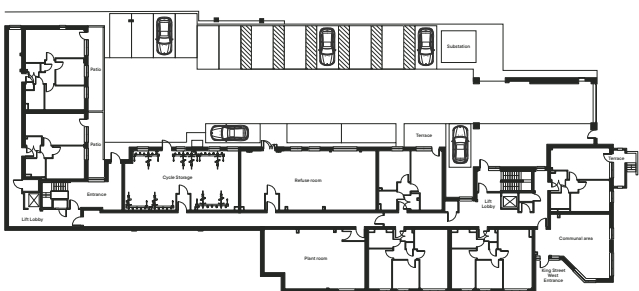
First Floor

Second Floor



Ground Floor

First Floor



Lower Ground

Ground Floor

Third Floor

40

Second Floor

29

First Floor

18

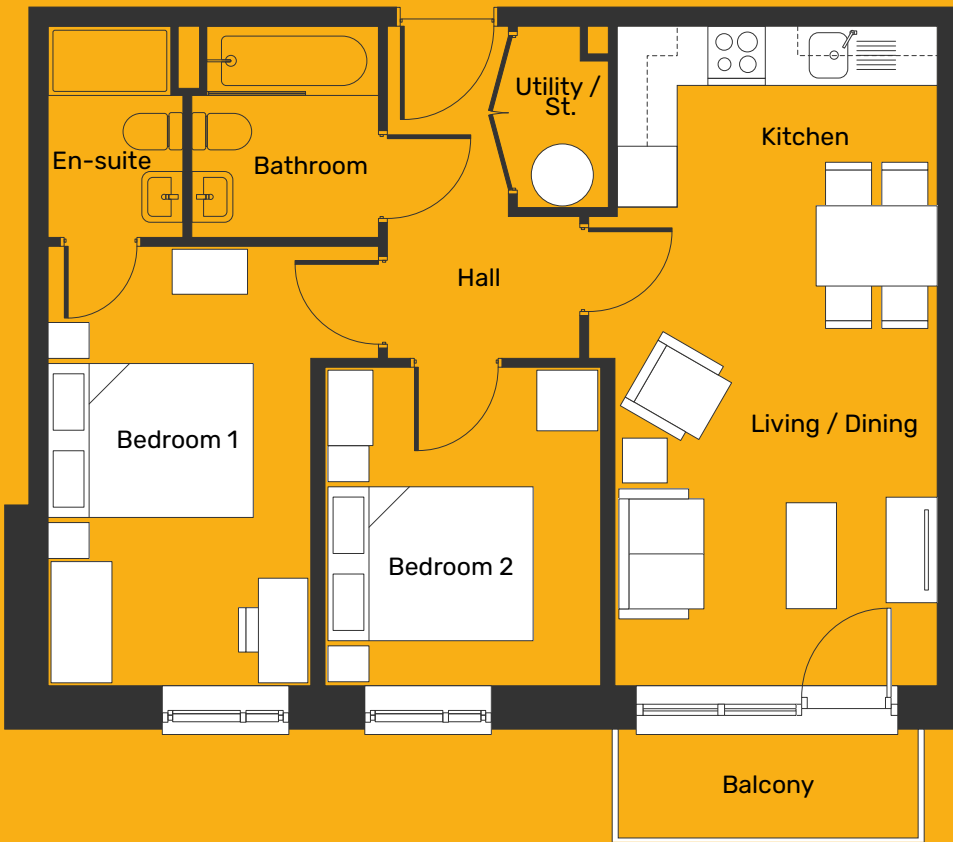
Ground Floor

7



The Tiviot

Two bedroom apartment
with balcony and en-suite



Room Type	Size (m)	Size (ft)
Kitchen	3.19 x 1.8	10.46 x 5.9
Living / Dining	3.21 x 4.77	10.53 x 15.64
Master Bedroom	2.61 x 4.38	8.56 x 14.37
En-Suite	1.34 x 2.1	4.39 x 6.88
Second Bedroom	2.74 x 3.17	8.98 x 10.40
Bathroom	2.1 x 1.85	6.88 x 6.06

Disclaimer
The details provided are subject to change and do not constitute part of a contract. Dimensions are for guidance only and you must satisfy yourself by inspection or otherwise as to the accuracy of information given. Please ask a lettings advisor for more information.

Apartments

Third Floor

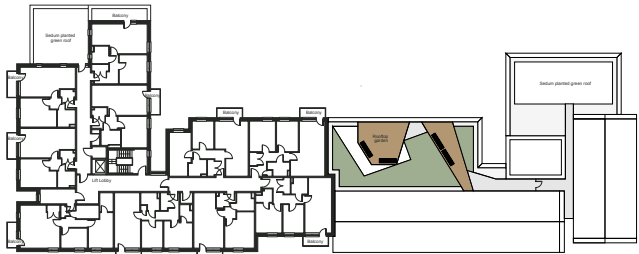
74

Second Floor

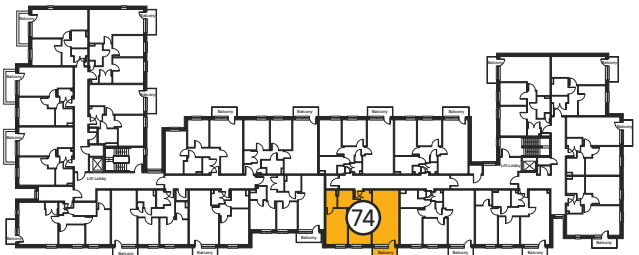
65

First Floor

56

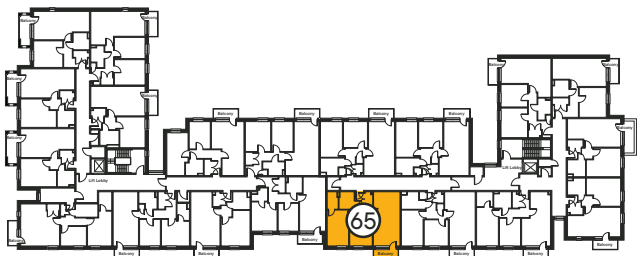


Third Floor



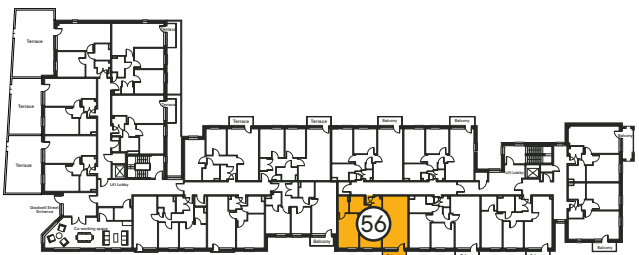
Second Floor

Third Floor



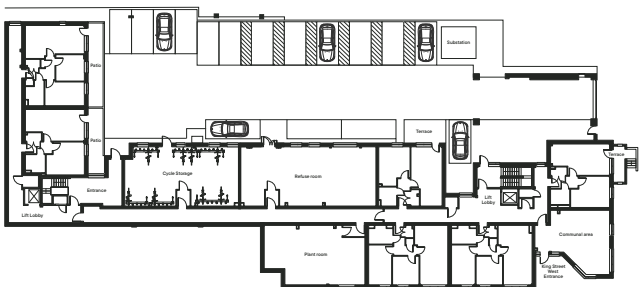
First Floor

Second Floor



Ground Floor

First Floor



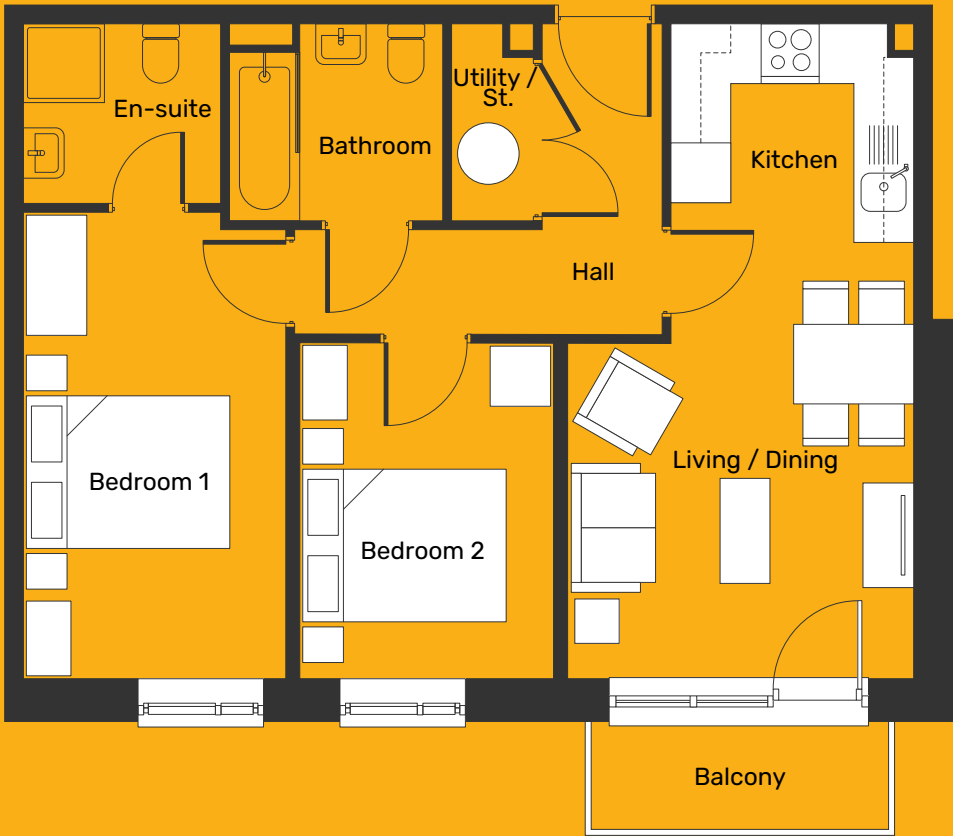
Lower Ground

Ground Floor



The Wellington

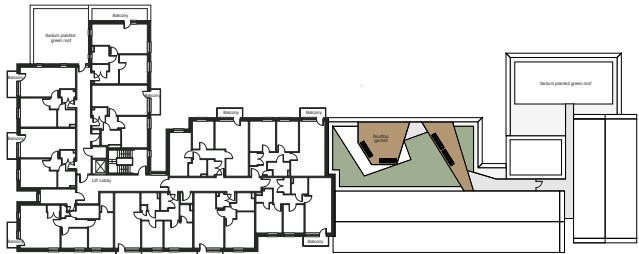
Two bedroom apartment
with balcony and en-suite



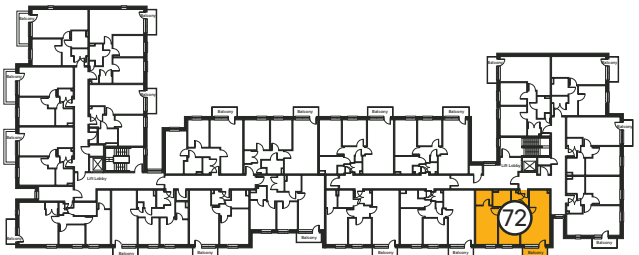
Room Type	Size (m)	Size (ft)
Kitchen	2.44 x 2.2	8.0 x 7.21
Living / Dining	3.45 x 4.37	11.31 x 14.33
Master Bedroom	2.63 x 4.68	8.62 x 15.35
En-Suite	1.97 x 1.80	6.46 x 5.9
Second Bedroom	2.53 x 3.36	8.3 x 11.0
Bathroom	2.13 x 1.97	6.98 x 6.46

Disclaimer
The details provided are subject to change and do not constitute part of a contract. Dimensions are for guidance only and you must satisfy yourself by inspection or otherwise as to the accuracy of information given. Please ask a lettings advisor for more information.

Apartments

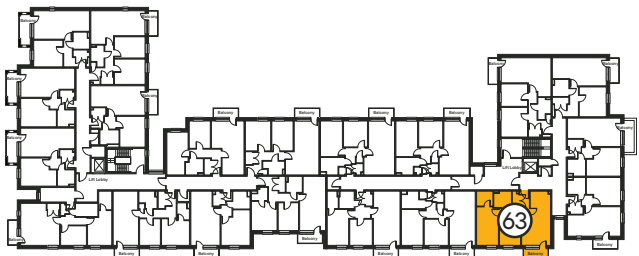


Third Floor



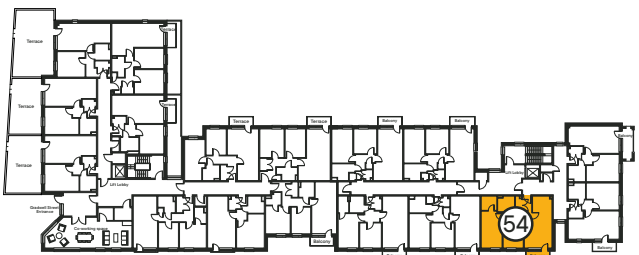
Second Floor

Third Floor



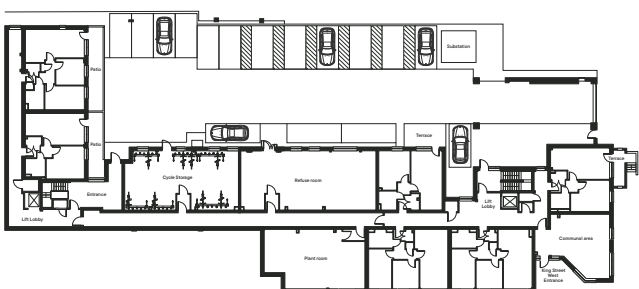
First Floor

Second Floor



Ground Floor

First Floor



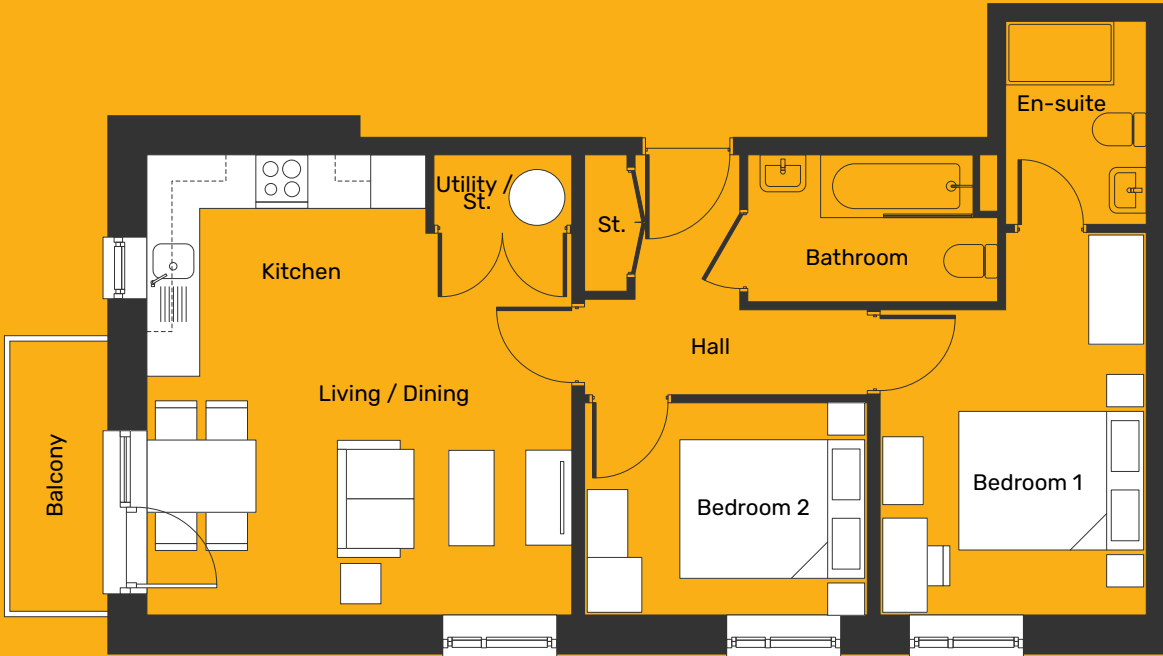
Lower Ground

Ground Floor



The Edgeley

Two bedroom apartment
with balcony and en-suite



Room Type	Size (m)	Size (ft)
Kitchen	3.08 x 2.47	10.10 x 8.10
Living / Dining	4.69 x 4.22	15.39 x 13.85
Master Bedroom	2.93 x 4.24	9.61 x 13.91
En-Suite	1.55 x 2.25	5.09 x 7.39
Second Bedroom	3.12 x 2.35	10.24 x 7.71
Bathroom	2.75 x 1.62	9.02 x 5.31

Disclaimer
The details provided are subject to change and do not constitute part of a contract. Dimensions are for guidance only and you must satisfy yourself by inspection or otherwise as to the accuracy of information given. Please ask a lettings advisor for more information.

Apartments

Third Floor

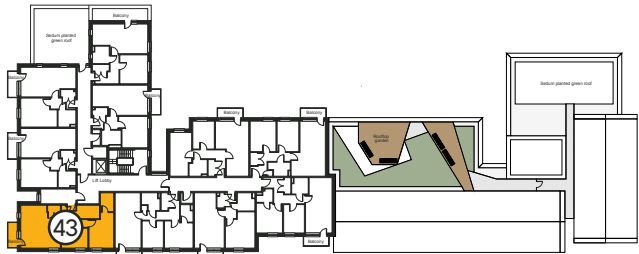
43

Second Floor

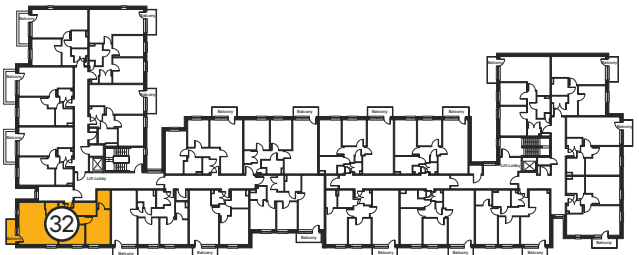
32

First Floor

21

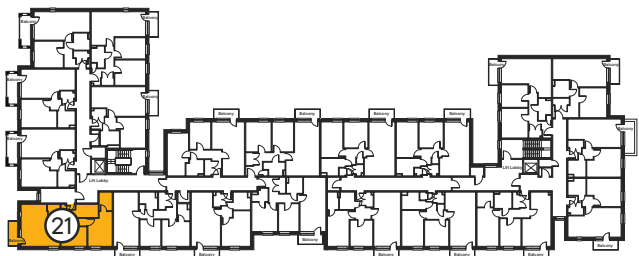


Third Floor



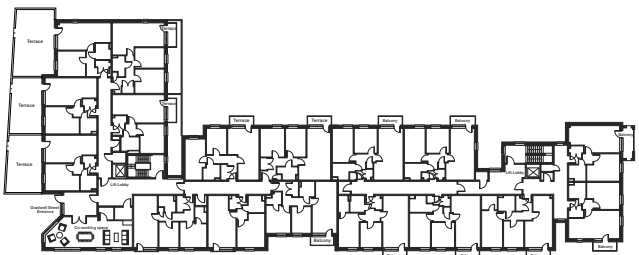
Second Floor

Third Floor



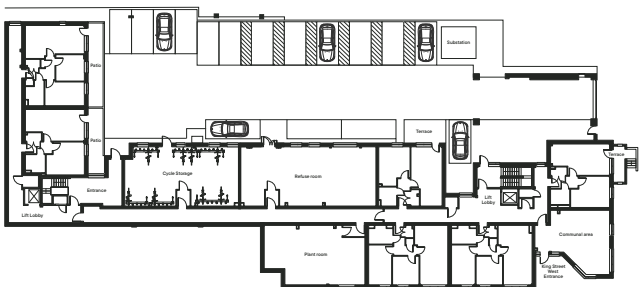
First Floor

Second Floor



Ground Floor

First Floor



Lower Ground

Ground Floor



The Riverbank

Two bedroom apartment
with balcony



Room Type	Size (m)	Size (ft)
Kitchen	1.63 x 4.73	5.35 x 15.52
Living / Dining	4.44 x 3.02	14.57 x 9.91
Master Bedroom	3.20 x 3.59	10.50 x 11.78
Second Bedroom	3.20 x 2.69	10.50 x 8.83
Bathroom	1.61 x 2.65	5.28 x 8.69

Disclaimer
The details provided are subject to change and do not constitute part of a contract. Dimensions are for guidance only and you must satisfy yourself by inspection or otherwise as to the accuracy of information given. Please ask a lettings advisor for more information.

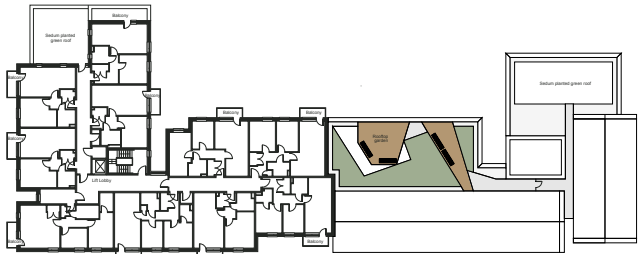
Apartments

Third Floor

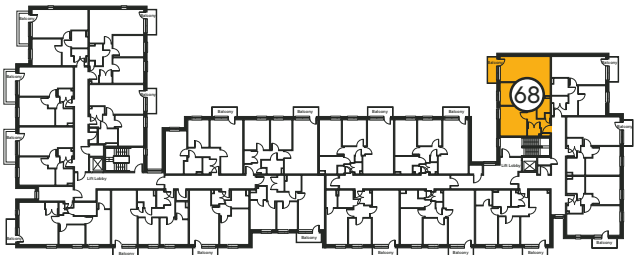
68

Second Floor

59

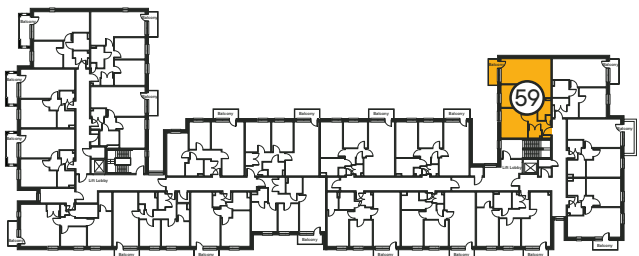


Third Floor



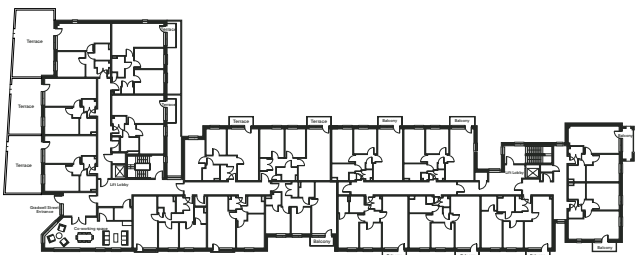
Second Floor

Third Floor



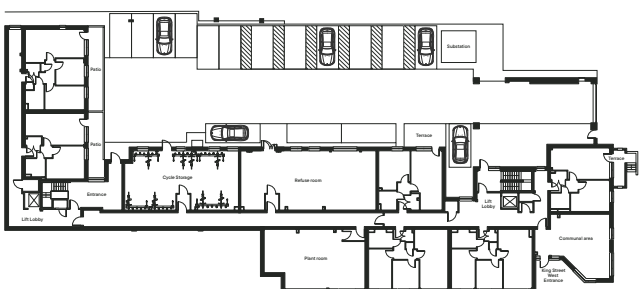
First Floor

Second Floor



Ground Floor

First Floor



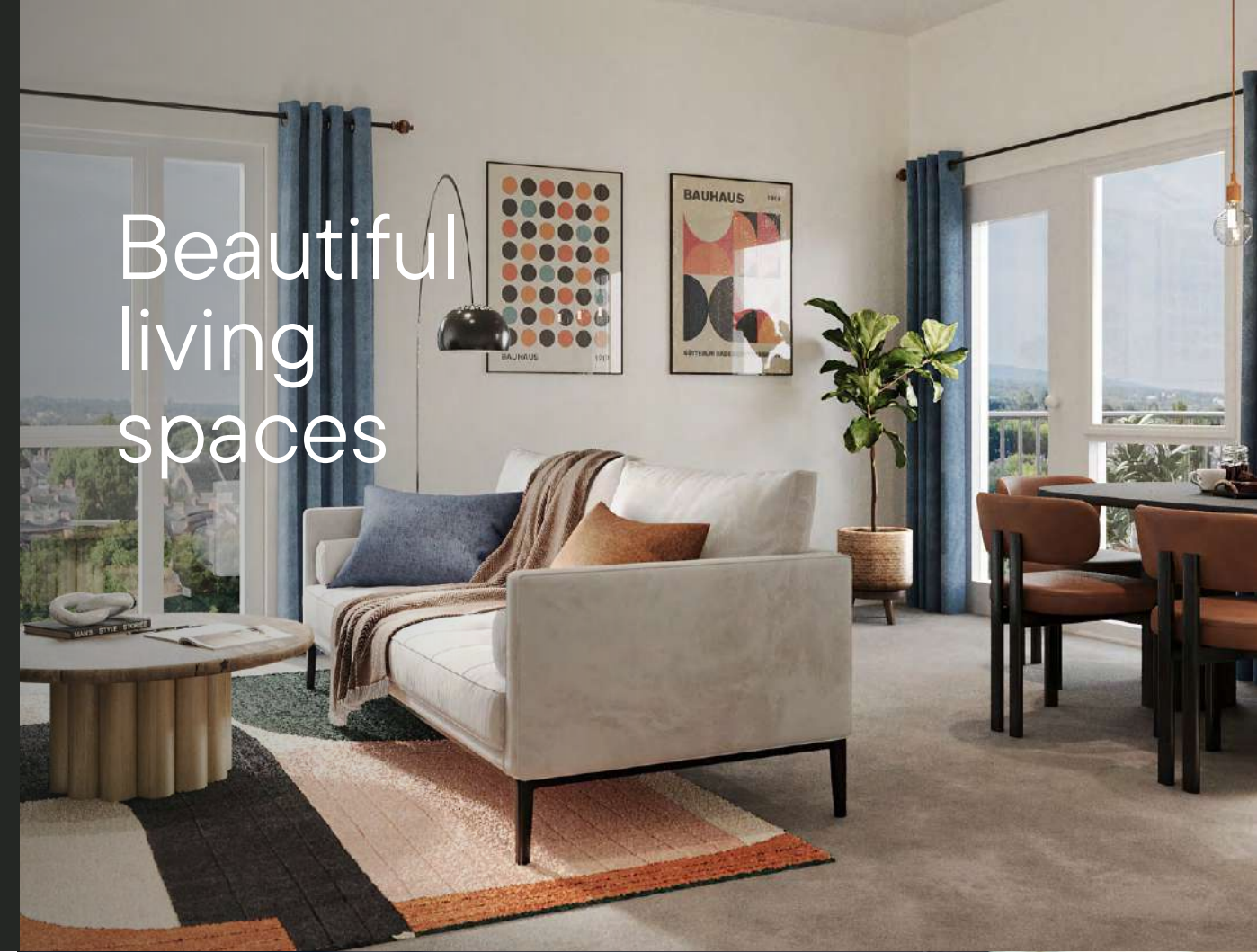
Lower Ground

Ground Floor



Life at Platform

Beautiful
living
spaces



Rooftop
terrace garden



40

Co-working
spaces with
wifi included



41



Who we are

We're a 'profit for purpose' housing organisation operating in the North West and Yorkshire. We are part of Great Places Housing Group and have been making home ownership easier for 20 years.

Based in Didsbury, Manchester, our multi-award winning teams specialise in offering first-time buyers affordable homeownership solutions, via options including Rent to Buy.

Our Plumlife Management team manage over 7,500 leasehold, shared ownership and rented properties across the North West, providing high-quality facilities management and lettings services. So you can feel safe, knowing you're in experienced hands.

King
Street
West

Stockport



Brought to you by →



In association with →



0161 447 5050
rent@plumlife.co.uk



/plumlifehomes



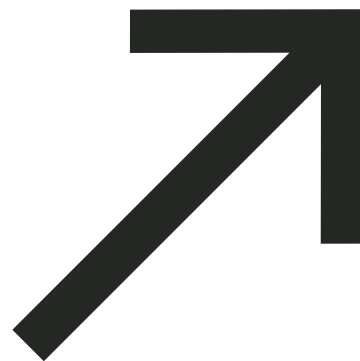
Plumlife Homes



@plumlifehomes



/PlumlifeHomes



Platform

For enquiries, please get in touch

Disclaimer

The details in this brochure are subject to change and do not constitute part of a contract. Prospective customers must satisfy themselves by inspection or otherwise as to the accuracy of information given in the brochure. Images are provided for illustration purposes only and may differ to the homes available; please ask a member of the lettings team for more information.