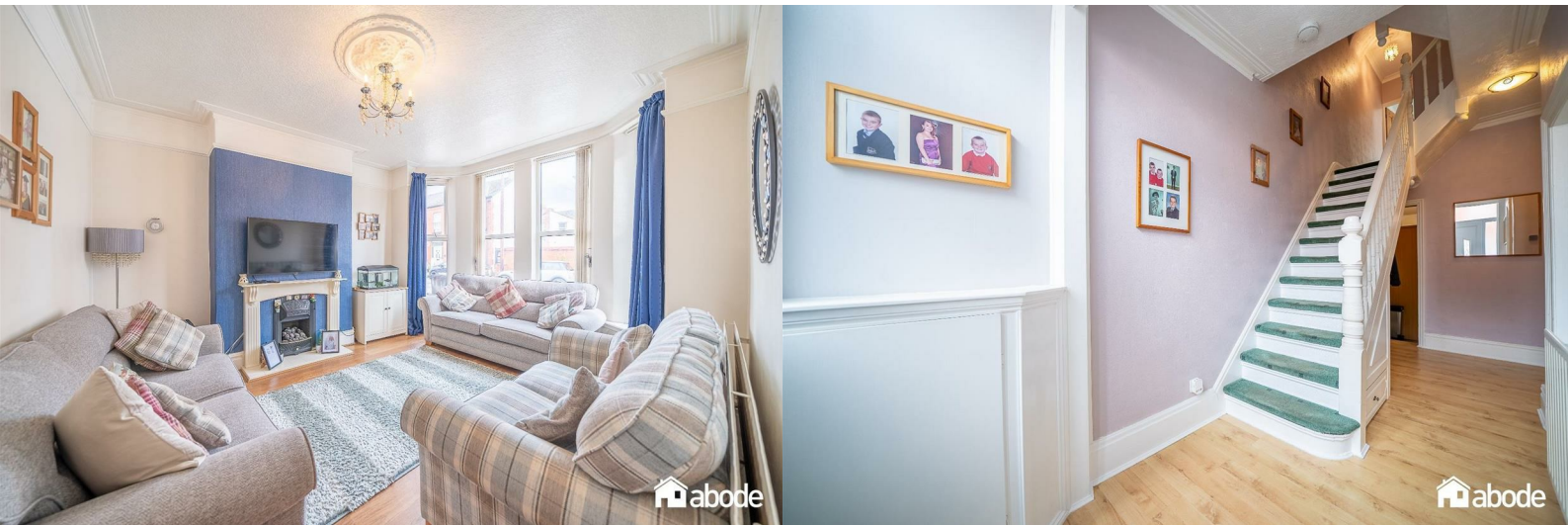




## 95 Lawton Road

Waterloo, Liverpool, L22 9QL

**Offers over £270,000**





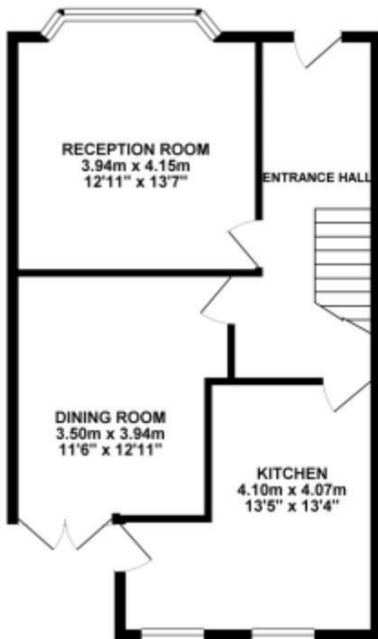
# 95 Lawton Road

Waterloo, Liverpool, L22 9QL

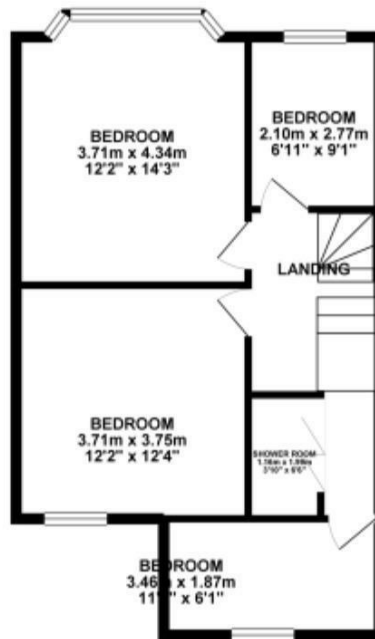
## Offers over £270,000



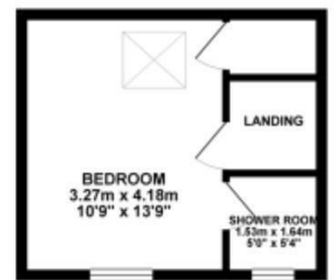
GROUND FLOOR 53.54 sq. m.  
( 576.29 sq. ft. )



1ST FLOOR 52.34 sq. m.  
( 563.37 sq. ft. )



2ND FLOOR 20.10 sq. m.  
( 216.32 sq. ft. )



TOTAL FLOOR AREA : 125.97 sq. m. ( 1355.98 sq. ft. ) approx.

Whilst every attempt has been made to ensure the accuracy of the floorplan contained here, measurements of doors, windows, rooms and any other items are approximate and no responsibility is taken for any error, omission or mis-statement. This plan is for illustrative purposes only and should be used as such by any prospective purchaser. The services, systems and appliances shown have not been tested and no guarantee as to their operability or efficiency can be given.  
Made with Metropix ©2024







