



84 Hollow Drive

Thornton, Liverpool, L23 4TD

Prices from £494,995



****LAST REMAINING SALISBURY - PLOT 100**** The beautiful Salisbury with an OPEN-PLAN kitchen/dining & living area. Integrated SINGLE GARAGE and two EN SUITE bathrooms.

About The Salisbury

Family space forms the heart of The Salisbury. On the ground floor you'll find an impressive 28ft open-plan kitchen, breakfast & family room, perfect for entertaining while French doors lead onto a lush garden. An attractive bay window in the lounge creates a bright and airy space to unwind and relax whilst giving the room character and sophistication. Upstairs you'll find an exceptional primary bedroom with a plush en suite bathroom. Bedroom two offers a spacious double room with en suite, along with two further double bedrooms together with a family bathroom.

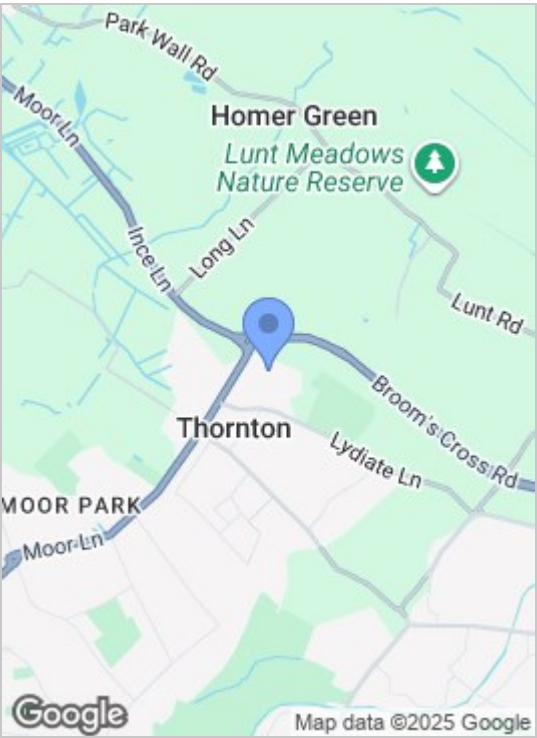
****Easymove Scheme Available, call to discuss**** 5* HBF Customer Satisfaction **

About the development

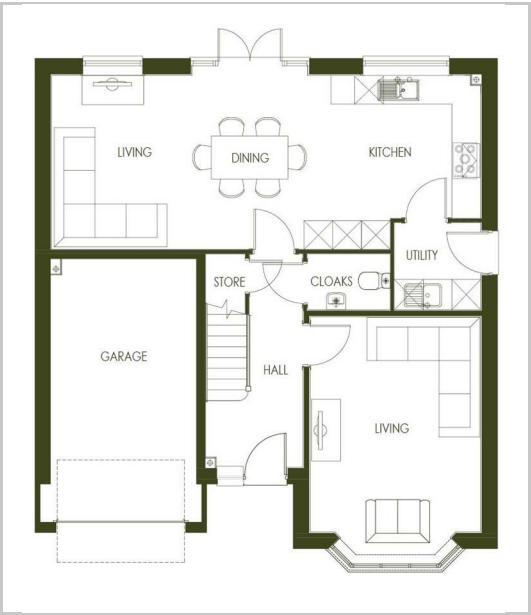


- Kitchen 11'10" x 11'10" (3.61 x 3.63)
- Dining 11'10" x 7'11" (3.63 x 2.42)
- Living 11'10" x 9'6" (3.63 x 2.92)
- Utility 6'0" x 6'0" (1.84 x 1.84)
- Lounge 14'8" x 11'8" (4.48 x 3.56)
- Cloaks 5'8" x 3'10" (1.73 x 1.17)
- Garage 18'0" x 10'0" (5.50 x 3.05)
- Bedroom 1 18'0" x 15'5" (5.51 x 4.70)
- Bedroom 2 12'6" x 10'3" (3.82 x 3.13)
- Bedroom 3 14'4" x 8'10" (4.37 x 2.71)
- Bedroom 4 12'9" x 9'0" (3.91 x 2.75)
- Bathroom 7'1" x 6'3" (2.17 x 1.93)
- En Suite 1 6'10" x 5'1" (2.09 x 1.55)
- En Suite 2 6'9" x 4'7" (2.08 x 1.41)

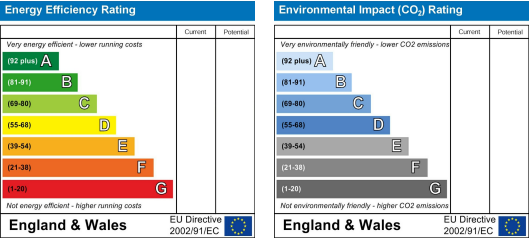
Area Map



Floor Plans



Energy Efficiency Graph



These particulars, whilst believed to be accurate are set out as a general outline only for guidance and do not constitute any part of an offer or contract. Intending purchasers should not rely on them as statements of representation of fact, but must satisfy themselves by inspection or otherwise as to their accuracy. No person in this firms employment has the authority to make or give any representation or warranty in respect of the property.