



68 Kemp Avenue

, Liverpool, L5 1AF

Offers over £200,000



Abode is delighted to present this charming three-bedroom semi-detached house located on Kemp Avenue, L5. This property boasts a spacious and practical layout, ideal for families or those seeking extra room for guests.

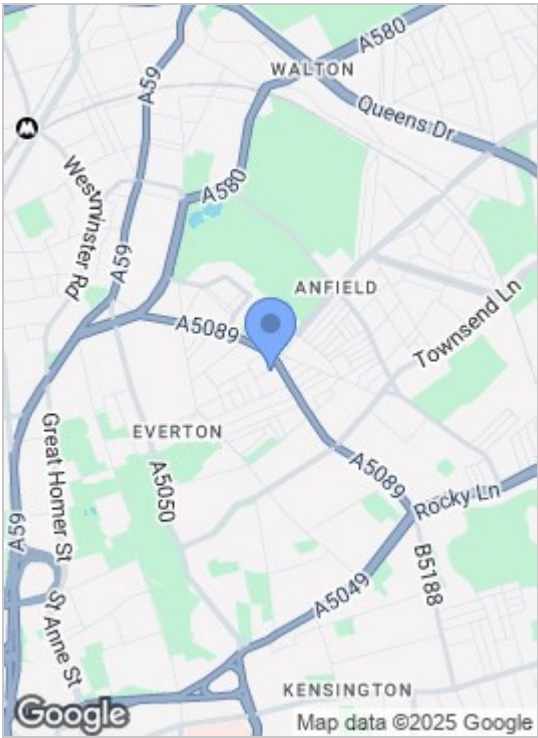
Upon entering the home, you will find a generous kitchen/diner that serves as a versatile space for both cooking and dining, perfect for family meals or entertaining friends. The separate lounge provides a dedicated area for relaxation, ensuring that you have a comfortable retreat after a long day. For added convenience, there is a downstairs w.c., making it easy for guests and family alike.

As you ascend to the first floor, you will discover three well-proportioned bedrooms, each offering ample space for personalisation and comfort. These rooms are complemented by a family bathroom, which provides essential amenities for everyday living.

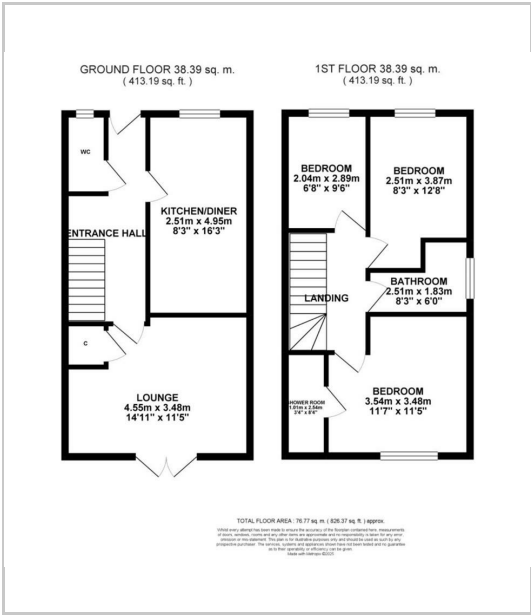
Externally, the property features a driveway at the front, allowing for convenient off-street parking, a valuable asset in urban living. The rear garden is a delightful addition, providing a private outdoor space that is perfect for recreational activities, gardening, or simply enjoying the fresh air.



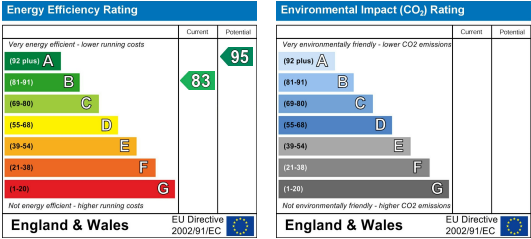
Area Map



Floor Plans



Energy Efficiency Graph



These particulars, whilst believed to be accurate are set out as a general outline only for guidance and do not constitute any part of an offer or contract. Intending purchasers should not rely on them as statements of representation of fact, but must satisfy themselves by inspection or otherwise as to their accuracy. No person in this firms employment has the authority to make or give any representation or warranty in respect of the property.