



## 54 Hollow Drive

Thornton, Liverpool, L23 4TD

Prices from **£254,995**



Castle Green - The Birkdale \*\*Furniture Package Available - See link for details\*\* Two Bedroom with Two En-Suite Bathrooms, Off Road Parking and Open Plan Kitchen/Dining Area.

\*\*Assisted Move Scheme Available, call to discuss\*\* 5\* HBF Customer Satisfaction 2025

### About the Birkdale

Introducing this charming 2-bedroom, 2 en-suite new home in Thornton, Liverpool. Ideal for first-time buyers, this property boasts a modern design with energy-efficient features and an EV car charging point. The open-plan kitchen, dining, and living room create a spacious and inviting atmosphere, perfect for entertaining guests or relaxing after a long day. To add more convenience, The Birkdale also features a separate cloak and utility room, saving you space while neatly tucking away your appliances. Upstairs, you'll find two generously sized bedrooms, each with their own beautiful en-suite bathrooms for added convenience.

### About the development



**Kitchen/Dining 14'11" x 8'9" (4.56 x 2.67)**

**Lounge 11'5" x 11'1" (3.50 x 3.39)**

**Cloaks / Utility 6'4" x 5'8" (1.94 x 1.73)**

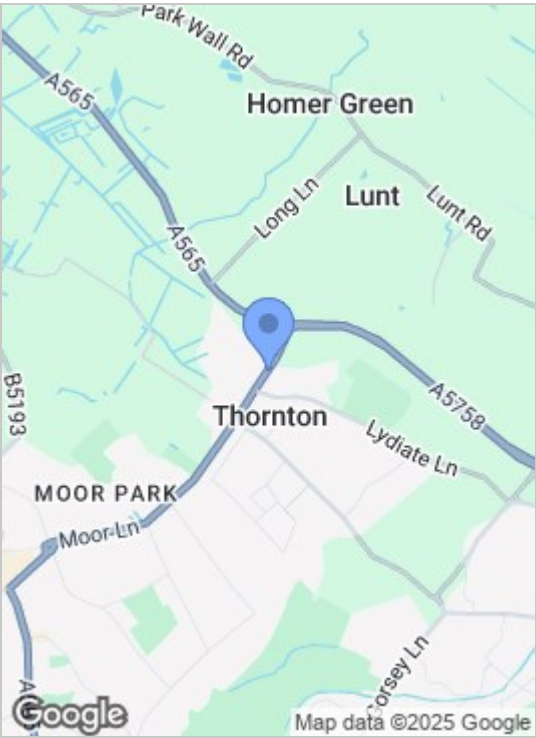
**Bedroom 1 14'11" x 9'3" (4.56 x 2.83)**

**En-Suite 7'1" x 5'7" (2.17 x 1.71)**

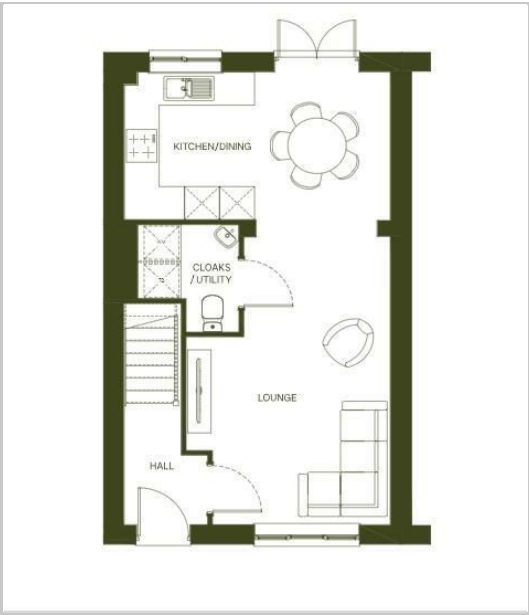
**Bedroom 2 11'4" x 10'8" (3.46 x 3.27)**

**Bathroom 8'9" x 3'11" (2.67 x 1.20)**

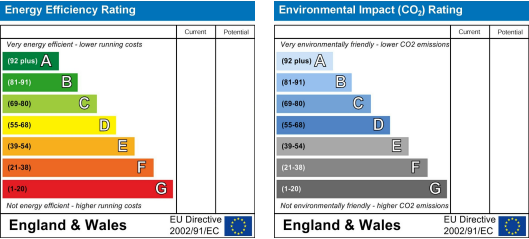
Area Map



Floor Plans



Energy Efficiency Graph



These particulars, whilst believed to be accurate are set out as a general outline only for guidance and do not constitute any part of an offer or contract. Intending purchasers should not rely on them as statements of representation of fact, but must satisfy themselves by inspection or otherwise as to their accuracy. No person in this firms employment has the authority to make or give any representation or warranty in respect of the property.