



2 Clarendon Road

Seaforth, Liverpool, L21 4LP

Offers over £150,000



Nestled in the charming area of Seaforth, Liverpool, this delightful end terrace house on Clarendon Road presents an excellent opportunity for families and first-time buyers alike. The property boasts a spacious layout, featuring two inviting reception rooms that provide ample space for relaxation and entertaining guests.

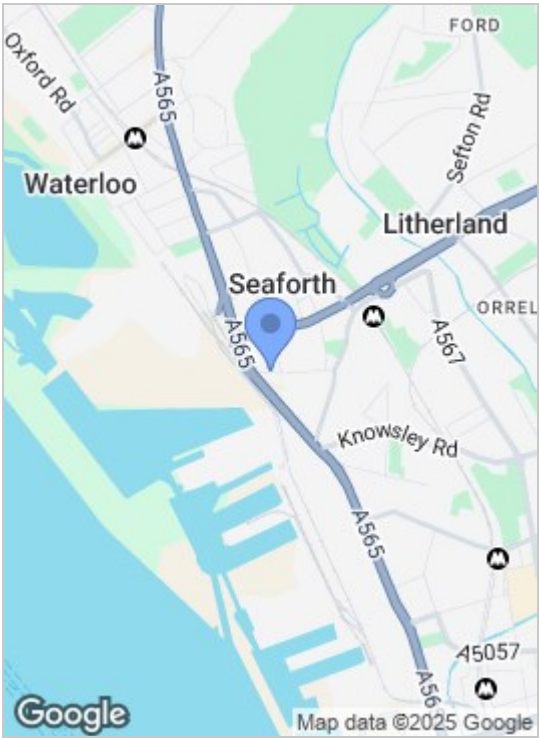
With three well-proportioned bedrooms, this home offers comfortable living for all family members. The newly fitted kitchen is a standout feature, designed with modern aesthetics and functionality in mind, making it a perfect space for culinary enthusiasts. Additionally, the newly renovated bathroom adds a touch of luxury and convenience, ensuring that daily routines are both enjoyable and efficient.

The location of this property is particularly appealing, as it combines the tranquillity of suburban living with easy access to local amenities and transport links. Residents can enjoy the nearby parks and recreational areas, making it an ideal setting for families and those who appreciate outdoor activities.

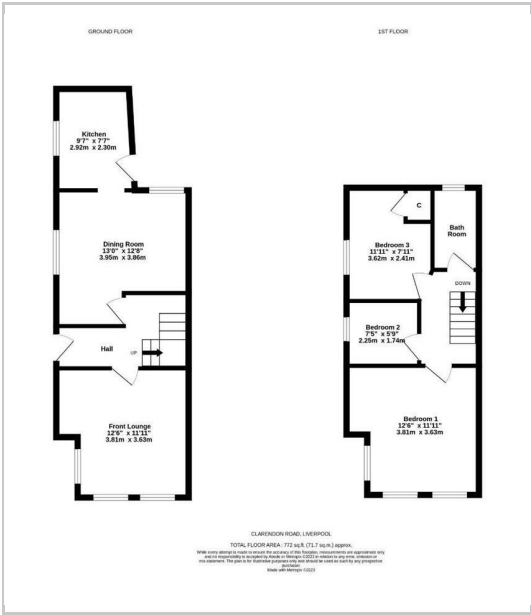
In summary, this end terrace house on Clarendon Road is a wonderful blend of modern updates and classic charm, offering a comfortable and inviting home in a sought-after area of Liverpool. Whether you are looking to



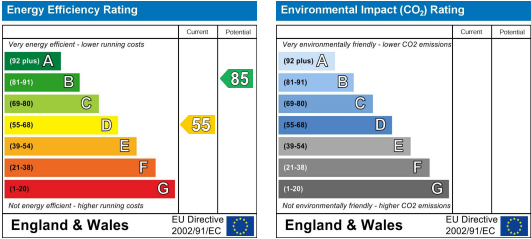
Area Map



Floor Plans



Energy Efficiency Graph



These particulars, whilst believed to be accurate are set out as a general outline only for guidance and do not constitute any part of an offer or contract. Intending purchasers should not rely on them as statements of representation of fact, but must satisfy themselves by inspection or otherwise as to their accuracy. No person in this firms employment has the authority to make or give any representation or warranty in respect of the property.