



12 Mornington Avenue

, Liverpool, L23 0SA

Offers in the region of £325,000



Abode is delighted to present this three-bedroom Extended family home, located in the highly sought-after L23 area. With a variety of amenities nearby, including shops, supermarkets, excellent transport links, and top-quality schools, Mornington Avenue offers everything a potential buyer could desire.

The property itself features an entrance vestibule leading into a spacious hallway. The ground floor boasts a large reception room with dual views to the front and back. There is a separate fitted kitchen with access to the rear garden which has recently been landscaped.

On the first floor, you'll find three bedrooms, each offering ample space, along with a large modern family bathroom changed around two years ago.

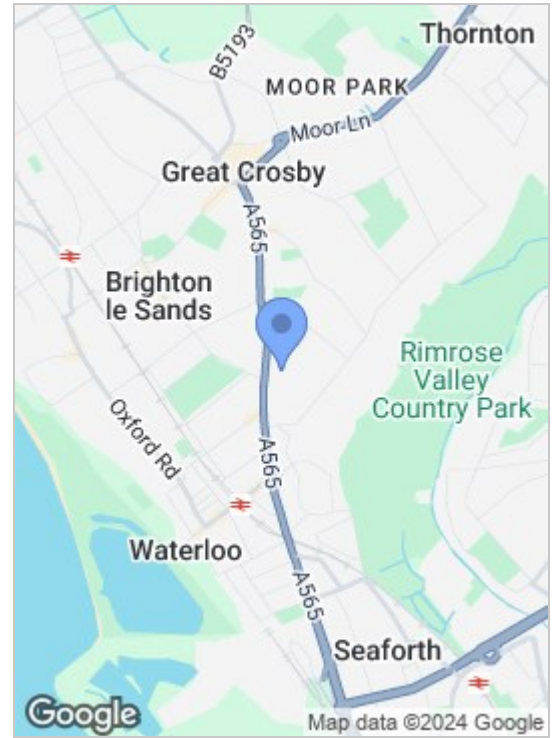
Outside, the home is complemented by Cheshire stone and Astro turf to the rear, perfect for relaxation and outdoor activities. There is parking to the front for convenience.

Don't miss out on this exceptional property—call now for an early viewing at 0151 909 3003.

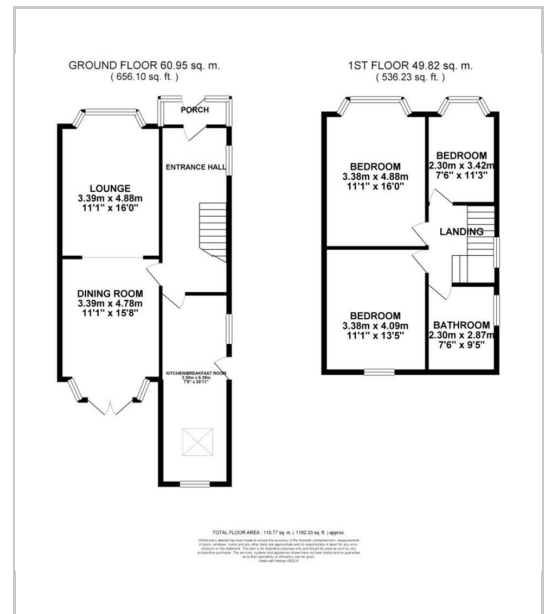
FREEHOLD
COUNCIL TAX BAND C
EPC C



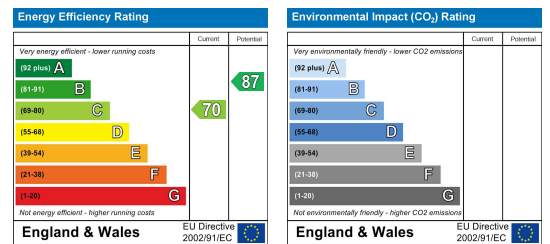
Area Map



Floor Plans



Energy Efficiency Graph



These particulars, whilst believed to be accurate are set out as a general outline only for guidance and do not constitute any part of an offer or contract. Intending purchasers should not rely on them as statements of representation of fact, but must satisfy themselves by inspection or otherwise as to their accuracy. No person in this firm's employment has the authority to make or give any representation or warranty in respect of the property.

82 Coronation Road, Crosby, Liverpool L23 5RH

6 Allerton Road, Mossley Hill, Liverpool, L18 1LN

2 Chapel Lane, Formby, Liverpool, L37 4DU

Tel: 0151 909 3003

Email: crosby@abode.group.co.uk

Web: www.abode-group.co.uk

Tel: 0151 601 3003

Email: allerton@abode-group.co.uk

Web: www.abode-group.co.uk

Tel: 01704 827 402

Email: formby@abode-group.co.uk

Web: www.abode-group.co.uk