



6 Thornfield Road

, Liverpool, L23 9XZ

£350,000



Abode is delighted to present this beautifully modernized three-bedroom semi-detached property, conveniently located near local shops, schools, and amenities. This family home has been renovated to an exceptionally high standard, offering a blend of modern style and functional living spaces.

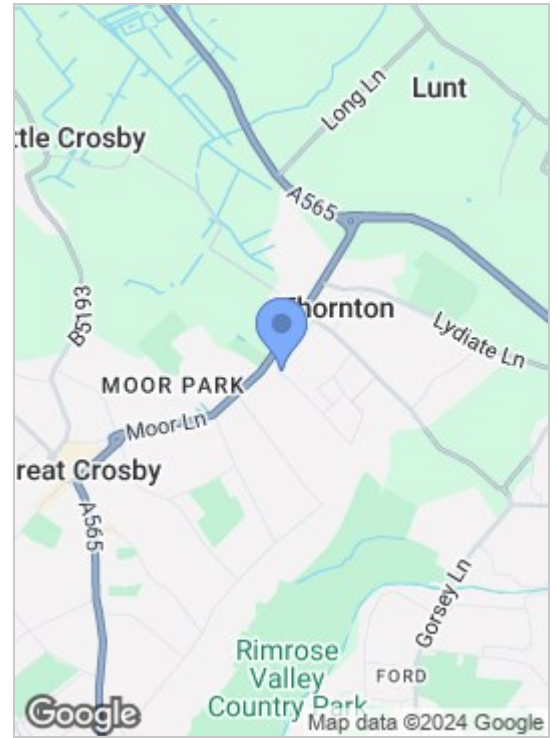
Upon entering, you are greeted by a welcoming hallway leading to a study/play room to the right, a downstairs WC and a dual view-aspect dining/lounge area flowing into a beautiful, contemporary "Wren" fitted kitchen. The kitchen is equipped with integrated appliances and a large breakfast bar unit making it perfect for family living and entertaining.

Upstairs are two large double bedrooms with fitted wardrobes and a single bedroom which is still a good size for versatile use. There is also a spacious family bathroom.

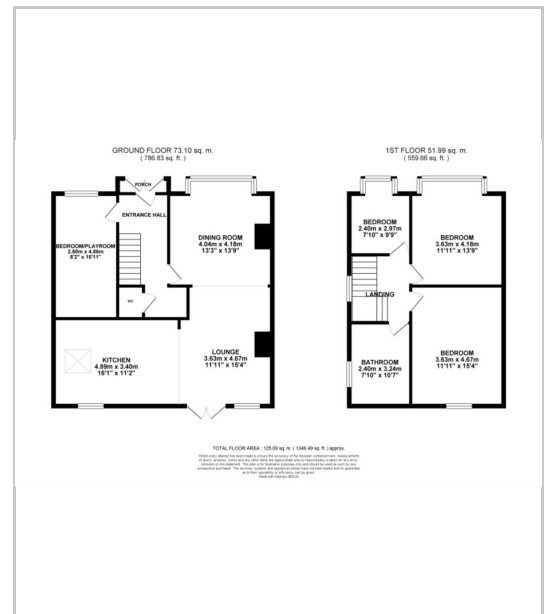
The front of the property offers a large driveway with ample parking, while the rear is complemented by a spacious garden, ideal for outdoor activities and relaxation. To fully appreciate the quality and thoughtful design of this exceptional home, a viewing is highly recommended.



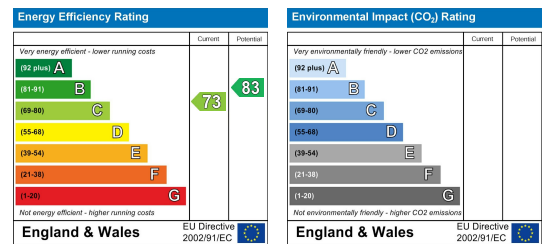
Area Map



Floor Plans



Energy Efficiency Graph



These particulars, whilst believed to be accurate are set out as a general outline only for guidance and do not constitute any part of an offer or contract. Intending purchasers should not rely on them as statements of representation of fact, but must satisfy themselves by inspection or otherwise as to their accuracy. No person in this firm's employment has the authority to make or give any representation or warranty in respect of the property.

82 Coronation Road, Crosby, Liverpool L23 5RH

6 Allerton Road, Mossley Hill, Liverpool, L18 1LN

2 Chapel Lane, Formby, Liverpool, L37 4DU

Tel: 0151 909 3003

Email: crosby@abode.group.co.uk

Web: www.abode-group.co.uk

Tel: 0151 601 3003

Email: allerton@abode-group.co.uk

Web: www.abode-group.co.uk

Tel: 01704 827 402

Email: formby@abode-group.co.uk

Web: www.abode-group.co.uk