

£126,500

8 Windlass Grove, Hanley, ST1 3ST



- BEAUTIFUL DUPLEX APARTMENT
- OPEN-PLAN LIVING AREA
- TWO DOUBLE BEDROOMS
- STYLISH FAMILY BATHROOM
- ENSUITE SHOWER ROOM
- ARRANGED OVER 1ST AND 2ND FLOORS
- MODERN AND SPACIOUS
- SINGLE GARAGE
- IDEAL FOR INVESTOR OR FIRST TIME BUYERS

BEAUTIFUL DUPLEX APARTMENT in quiet location, close to Hanley Town Centre. No upward chain. Two bedrooms, two bathrooms and fabulous open-plan lounge-dining-kitchen space. Dedicated garage and secure entrance to the apartment, which is positioned on the first and second floors of this modern development.

2 Windlass Grove, Hanley, ST1 3ST

ENTRANCE HALLWAY

8'2" x 12'11" (2.49m x 3.94m) max

Entrance into the apartment is via the secure ground floor intercom system, up to the first floor main entrance door to the apartment. This leads into the main hallway of this lovely duplex flat, with wood-effect flooring, painted walls, doors off to the bedrooms and bathroom accommodation, and stairs up to the main first floor accommodation.

OPEN PLAN LIVING SPACE

22'11" x 19'2" (6.99m x 5.84m)

Spacious, bright and modern. This large open-plan space includes the lounge, dining and kitchen area - beautifully presented, with UPVC French Doors opening onto a Juliette balcony. Wood-effect flooring, painted walls, stylish kitchen fittings including electric oven and gas hob with extractor above, space for fridge-freezer, space and plumbing for washing machine. A really well-planned space that feels airy and bright, with windows on two elevations and bright, clean decor.

KITCHEN AREA OF LIVING SPACE

11'4" x 8'2" (3.45m x 2.49m)

Comprising the range of fitted wall and base units, with an extended breakfast bar, which cleverly divides the room into this kitchen section, adjacent to the open-plan area where a dining table is nicely positioned.

STORE ROOM

8'8" x 4'3" (2.64m x 1.30m)

Every home needs one! This large store-room houses the combi boiler, making it perfect as a drying room, with yet more space for storage of vacuum cleaner and other essential items that no-one wishes to be permanently on show!

BEDROOM ONE

14'4" x 9'4" (4.37m x 2.84m)

A spacious and bright double bedroom, with fitted carpet, wall mounted radiator and UPVC French doors, opening on to the first floor Juliette balcony. Wonderful quiet position, despite being at the heart of the city! Doorway into the ensuite shower room.

ENSUITE SHOWER ROOM

8'4" x 5'11" (2.54m x 1.80m)

Modern and spotless - shower cubicle, wash hand basin and wc. Useful store cupboard. Wall mounted radiator and UPVC double glazed window. Tile-effect flooring and fresh white decor.

BEDROOM TWO

9'7" x 10'7" (2.92m x 3.23m)

A second double room that has the luxury of high-quality fitted wardrobes only recently installed. Plenty of remaining space for a double bed and additional furniture. Fitted carpet, light and bright decor, wall mounted radiator and UPVC double glazed window.

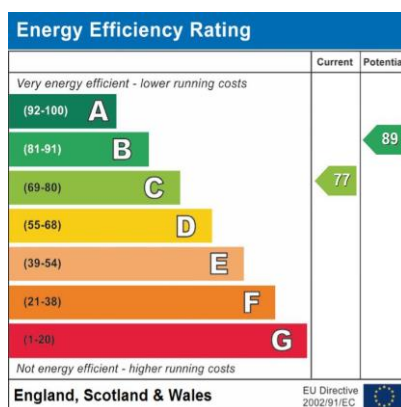
FAMILY BATHROOM

6'8" x 5'10" (2.03m x 1.78m)

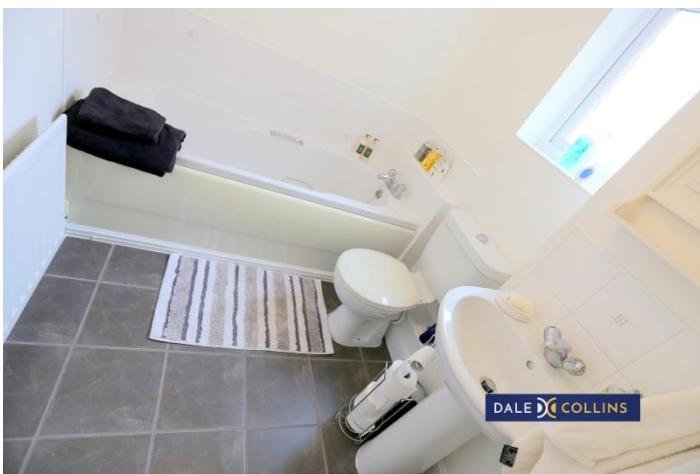
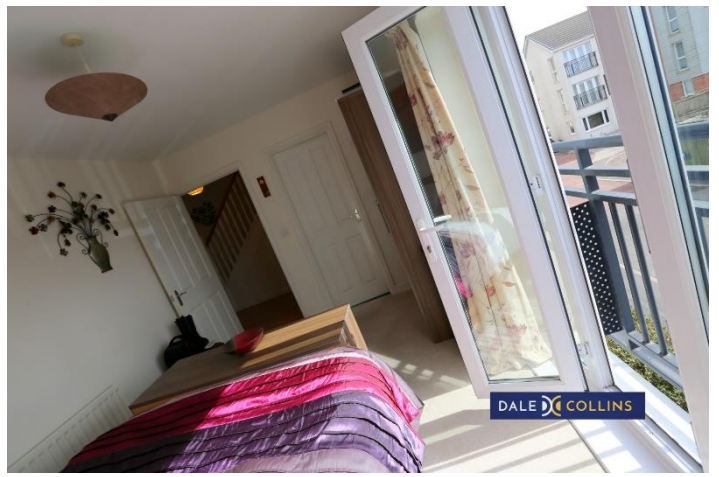
White and sparkling. The main bathroom has bath, wc and wash hand basin, with tiled splash-backs, tile-effect flooring, wall mounted radiator and UPVC double glazed window.

SINGLE GARAGE

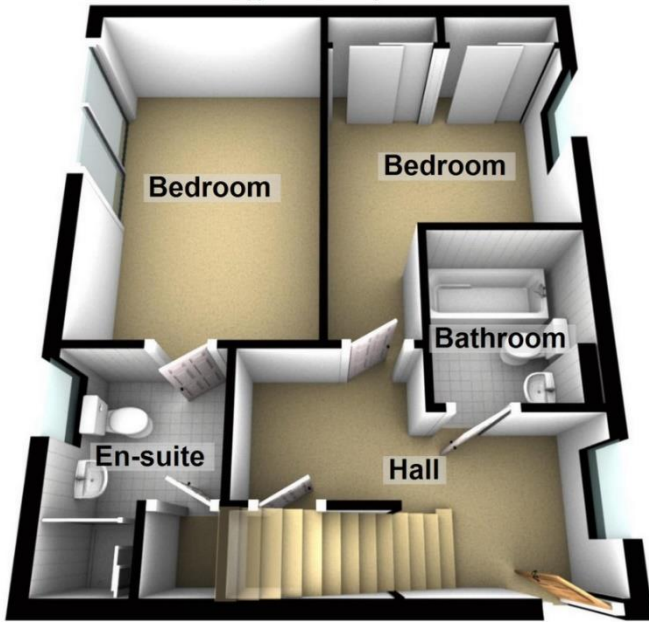
The property has a dedicated single garage within the demise of the property. Ideal for vehicle storage (of course!) but also for secure storage of bikes, etc. A real bonus with any inner-city location!



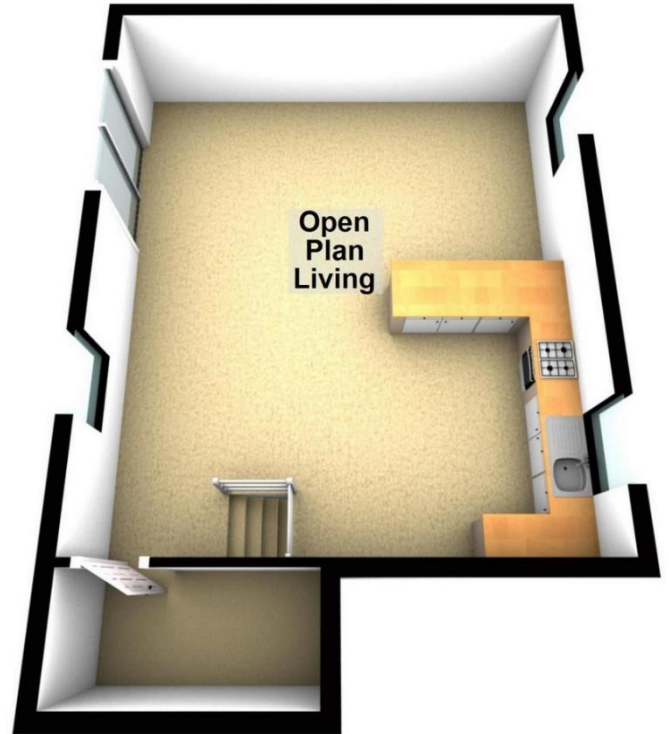




Ground Floor
Approx. 455.1 sq. feet



First Floor
Approx. 496.4 sq. feet



Total area: approx. 951.5 sq. feet

Plan produced by www.firstpropertyservices.co.uk. We accept no responsibility for any mistake or inaccuracy contained within the floorplan. The floorplan is provided as a guide and should be taken as an illustration only. The measurements, contents and positioning are approximations only and provided as a guidance tool and not an exact replication of the property.
Plan produced using PlanUp.

Location: ST1 3ST



VIEWING BY APPOINTMENT WITH AGENTS DALE AND COLLINS ESTATE AGENTS

Unit 14, Trentham Technology Park, Bellringer Road, Trentham, Stoke-On-Trent, Staffordshire, ST4 8LJ T: 01782 595050 E: sales@daleandcollins.com | lettings@daleandcollins.com W: www.daleandcollins.com

General: While we endeavour to make our sales particulars fair, accurate and reliable, they are only a general guide to the property and, accordingly, if there is any point which is of particular importance to you, please contact the office and we will be pleased to check the position for you, especially if you are contemplating travelling some distance to view the property.

Measurements: These approximate room sizes are only intended as general guidance. You must verify the dimensions carefully before ordering carpets or any built-in furniture.

Services: Please note we have not tested the services or any of the equipment or appliances in this property, accordingly we strongly advise prospective buyers to commission their own survey or service reports before finalizing their offer to purchase.

THESE PARTICULARS ARE ISSUED IN GOOD FAITH BUT DO NOT CONSTITUTE REPRESENTATIONS OF FACT OR FORM PART OF ANY OFFER OR CONTRACT. THE MATTERS REFERRED TO IN THESE PARTICULARS SHOULD BE INDEPENDENTLY VERIFIED BY PROSPECTIVE BUYERS OR TENANTS. NEITHER DALE AND COLLINS ESTATE AGENTS NOR ANY OF ITS EMPLOYEES OR AGENTS HAS ANY AUTHORITY TO MAKE OR GIVE ANY REPRESENTATION OR WARRANTY WHATEVER IN RELATION TO THIS PROPERTY.

YOUR HOME IS AT RISK IF YOU DO NOT KEEP UP REPAYMENTS ON A MORTGAGE OR OTHER LOAN SECURED ON IT.

Written quotations available on request. All loans secured on property. Life assurance is usually required.