



West Hampstead, NW6

£1,075,000

A beautifully presented three bedroom duplex flat occupying the top two floors of a fantastic period property. Bright and modern, the property is a short walk from Finchley Road underground station.

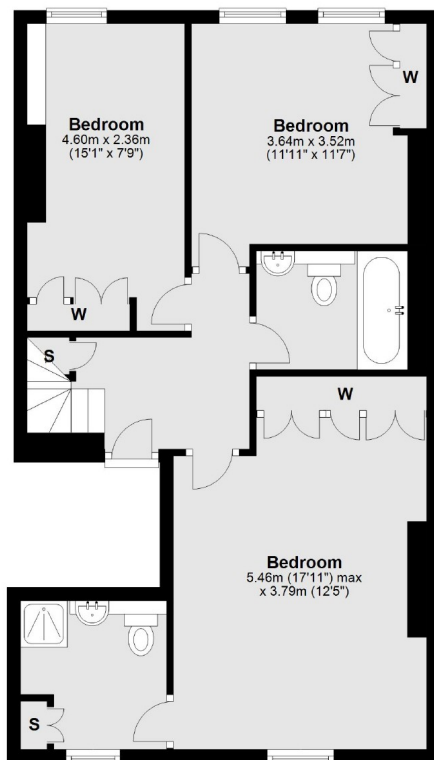
This fantastic apartment is located in the heart of the South Hampstead Conservation Area and is within walking distance of the renowned areas of Hampstead and Belsize Park. There is additional eligibility and access to the 'Green Triangle Gardens'.

Features

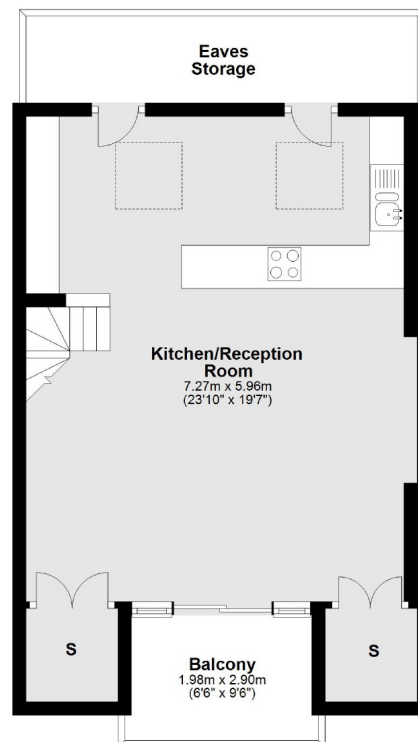
- Three Bedrooms
- Two Bathrooms
- Balcony
- Superb Condition
- South Hampstead
- Close Shops/Transport

Fairhazel Gardens, London, NW6

Second Floor



Fourth Floor



Main area: Approx. 107.6 sq. metres (1158.2 sq. feet)
Plus balconies, approx. 5.7 sq. metres (61.8 sq. feet)

Contact

To arrange a viewing call our office on the number below or visit our website.



Energy Rating: D. We aim to make our particulars both accurate and reliable. However they are not guaranteed; nor do they form part of an offer or contract. If you require clarification on any points then please contact us, especially if you're traveling some distance to view. Please note that appliances and heating systems have not been tested and therefore no warranties can be given as to their good working order.