



Sumatra Road, NW6

£795,000

This spacious two double bedroom apartment is spread over the first and second floors of this converted Victorian building and has a private balcony. The property has an open plan reception room which is perfect for entertaining and will be sold with no onward chain.

Sumatra Road is conveniently located off of vibrant West End Lane which offers easy access to the variety of shops, bars and restaurants including all the versatile transport links (Thameslink, London Overground and West Hampstead tube station - Jubilee Line).

Features

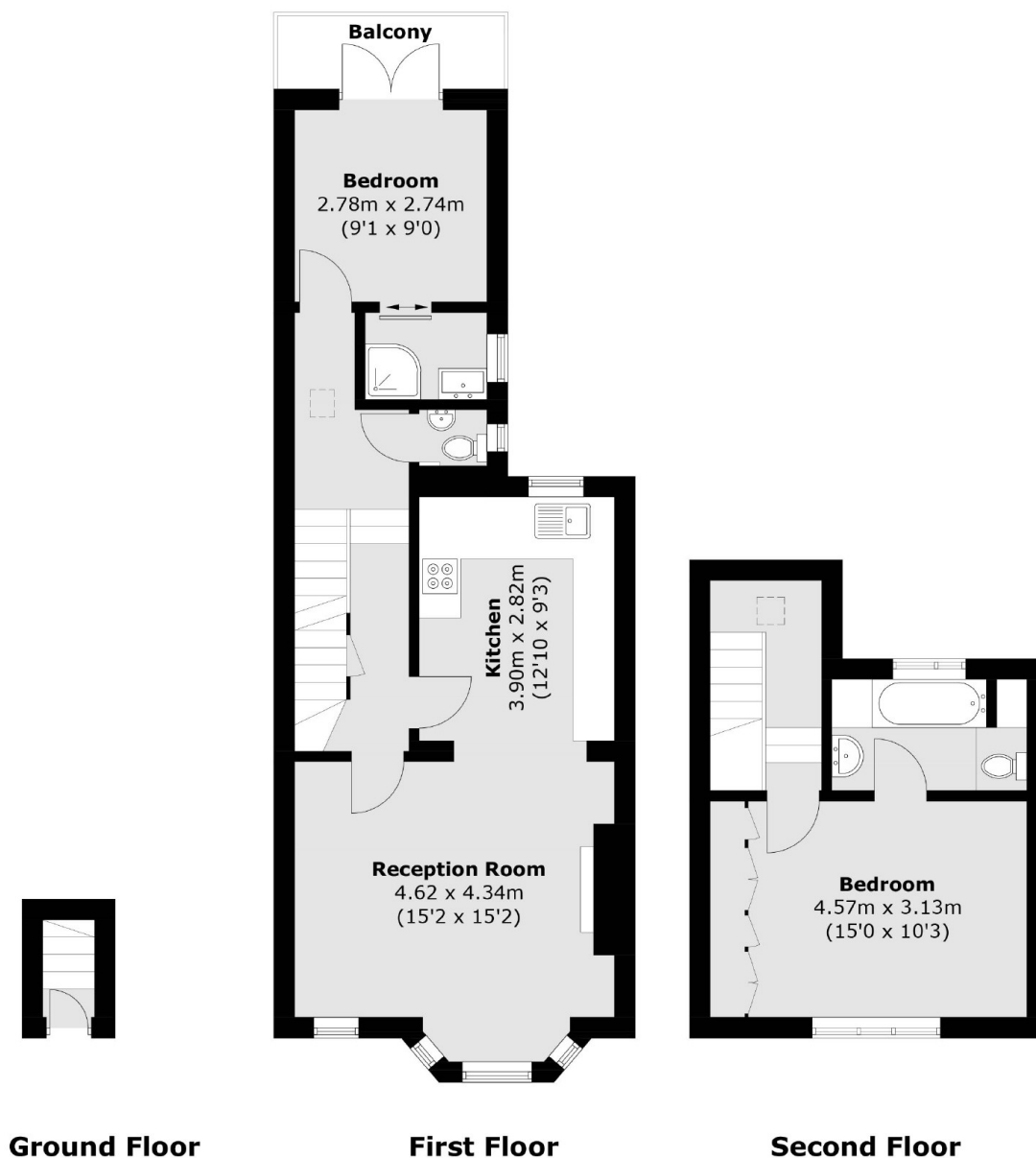
- Victorian Building
- Two Bedrooms
- Private Balcony
- Two Bathrooms
- Open Plan
- No Onward Chain



Sumatra Road, NW6



Sumatra Road, London, NW6



Total area (approx.): 77.5 sq. m (834.0 sq. ft)
Balcony: 3.5 sq. m (37.6 sq. ft)