



West End Lane, NW6

£700,000

Dexters



West End Lane, NW6

Forming the entire first and second floors of an elegant Victorian property, a newly refurbished flat offering in excess of 1000 sq ft of bright and spacious accommodation with a superbly fitted kitchen/reception room, and three bedrooms.

Conveniently located between West Hampstead and Kilburn, a moments walk from the first class shopping facilities of Kilburn High Road and both Kilburn underground station and Kilburn Park mainline station.

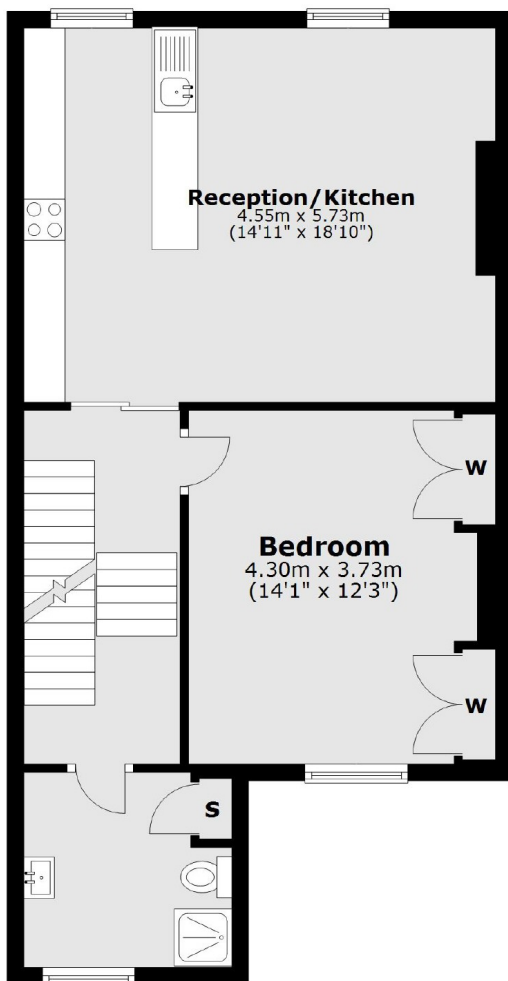
Features

- Three Bedrooms
- Reception/Kitchen
- Bathroom
- Shower Room
- Newly Refurbished
- Close to Shops

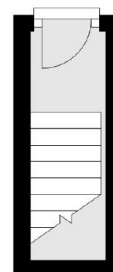


West End Lane, London, NW6

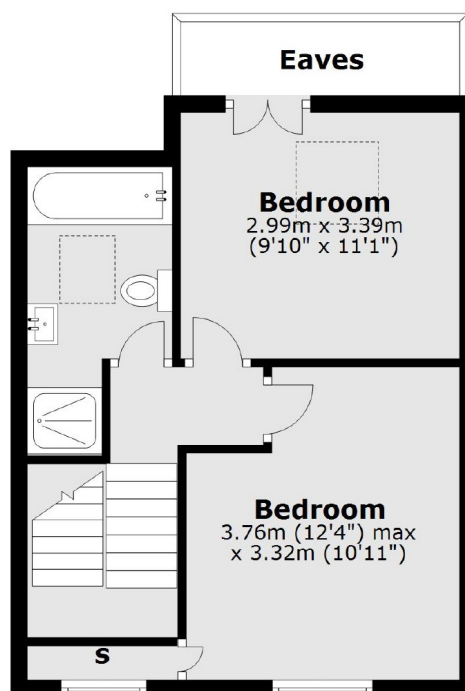
First Floor



Ground Floor



Second Floor



Total area: approx. 95.1 sq. metres (1023.4 sq. feet)