

South Hampstead, NW6

£1,100,000

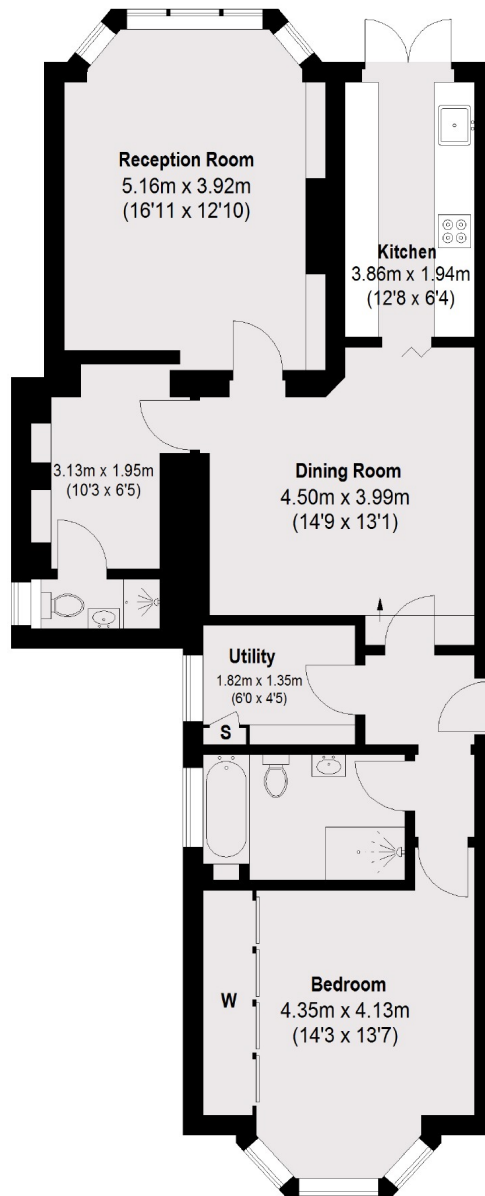
A large two bedroom apartment newly refurbished to a high standard, set on the ground floor of this Victorian conversion with high ceilings in the heart of South Hampstead.

The location is excellent and is just a short walk from the Jubilee Line, as well as the London Overground and Thameslink lines and the multiple amenities of West End Lane.

Features

- Two Bedrooms
- Two Bathrooms
- Leasehold
- Communal Gardens
- Good Condition
- Close To Shops/Transport

Priory Road, London, NW6



Ground Floor

Total area (approx.): 87.77 sq. m (945 sq. ft)

Contact

To arrange a viewing call our office on the number below or visit our website.



Energy Rating: C. We aim to make our particulars both accurate and reliable. However they are not guaranteed; nor do they form part of an offer or contract. If you require clarification on any points then please contact us, especially if you're traveling some distance to view. Please note that appliances and heating systems have not been tested and therefore no warranties can be given as to their good working order.