



Compayne Gardens, NW6

£1,250,000

Situated in a much sought after prime South Hampstead location, this three bedroom ground floor garden flat is offered chain free. This property comprises modern bathrooms, large kitchen/dining/reception room leading to a private rear garden in excess of 90ft.

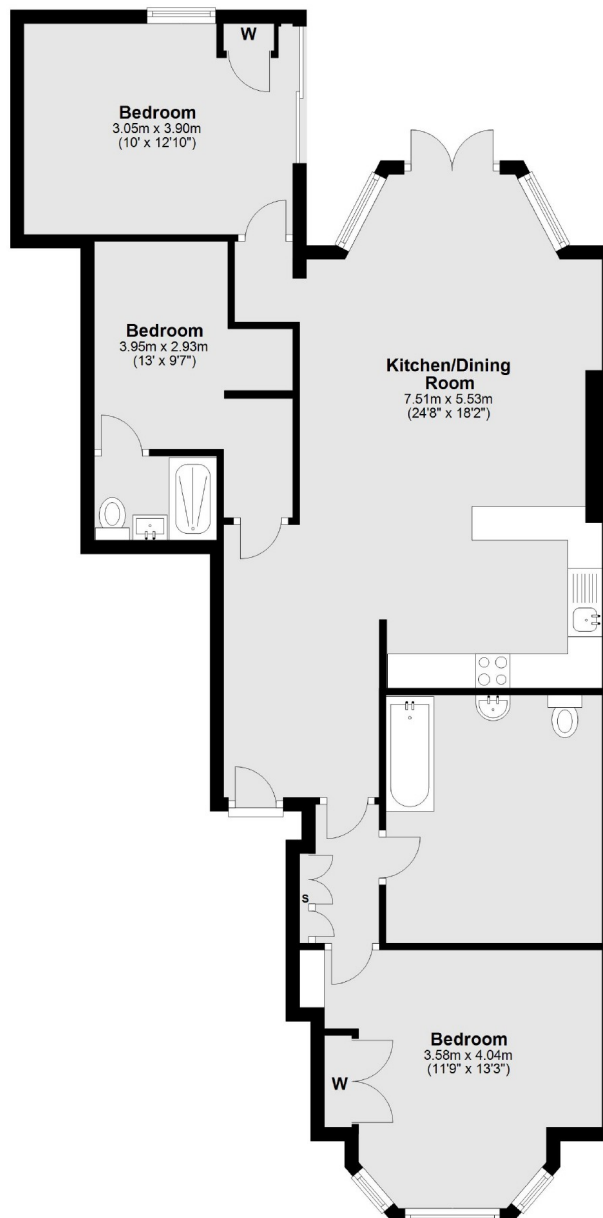
The property is very conveniently located within easy access of West Hampstead (with Thameslink services), South Hampstead, Swiss Cottage and Finchley Road stations, as well as numerous regular bus routes providing excellent cross-London links.

Features

Three Bedrooms
Two Bathrooms
Chain Free
New Lease
Ground Floor
Garden Flat

Compayne Gardens, London, NW6

Ground Floor



Total area: approx. 90.9 sq. metres (978.3 sq. feet)

Contact

To arrange a viewing call our office on the number below or visit our website.



Energy Rating: D. We aim to make our particulars both accurate and reliable. However they are not guaranteed; nor do they form part of an offer or contract. If you require clarification on any points then please contact us, especially if you're traveling some distance to view. Please note that appliances and heating systems have not been tested and therefore no warranties can be given as to their good working order.