



Belsize Road, NW6

£2,250,000

Dexters





## Belsize Road, London, NW6

Located in a quiet enclave close to Finchley Road is this well presented and larger than average four bedroom, two bathroom town house.

Comprising two separate reception rooms, a large extended kitchen and living room leading on to a private walled garden.

This property also features a private driveway providing off street parking. This family home has been well maintained by the current owners

This house is perfect for a large family and is located close to local cafés, restaurants and the shopping and leisure facilities of the O2 Centre.

Belsize Road is ideally positioned with both Swiss Cottage station (Jubilee line) and Finchley Road station (Jubilee & Metropolitan lines) less than half a mile away.

### Features

- Four Bedrooms
- Two Bathrooms
- Large Garden
- Private Driveway
- Close To Local Shops
- Superb Condition









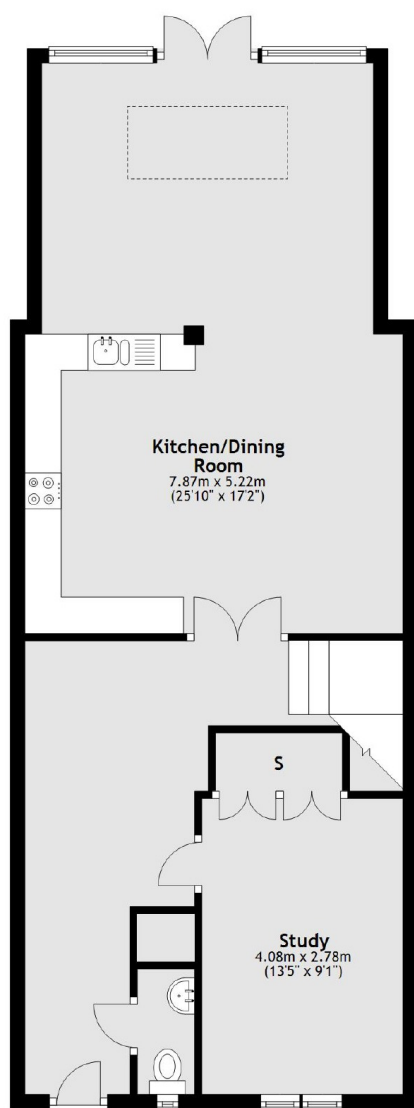




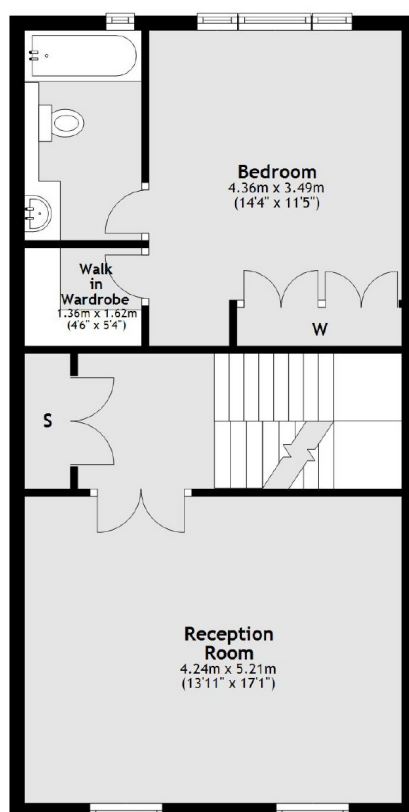


# Belsize Road, London, NW6

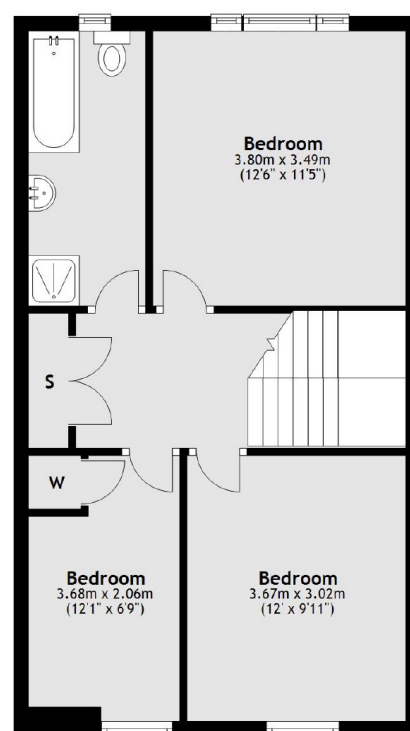
Ground Floor



First Floor



Second Floor



Total area: approx. 176.1 sq. metres (1895.7 sq. feet)

**Dexters**

West Hampstead Sales  
349 West End Lane, West  
Hampstead, London, NW6 1LT  
Sales  
020 7644 9300

Energy Rating: D. We aim to make our particulars both accurate and reliable. However they are not guaranteed; nor do they form part of an offer or contract. If you require clarification on any points then please contact us, especially if you're traveling some distance to view. Please note that appliances and heating systems have not been tested and therefore no warranties can be given as to their good working order.

**RICS** | Regulated  
Estate Agent  
and Letting Agent

[dexters.co.uk](http://dexters.co.uk)