



**Solent Road, NW6**

**£1,795,000**

**Dexters**





## Solent Road, NW6

Step into timeless elegance with this beautiful four bedroom period home, offering charm, space, and contemporary comfort across three floors. The property will be sold with no onward chain.

From the moment you enter, you're welcomed by a grand through-reception room, featuring high ceilings, a striking fireplace, and a classic bay window perfect for both relaxed evenings and sophisticated entertaining. The kitchen/dining room at the rear is ideal for modern family living, seamlessly connecting to the private garden for effortless indoor-outdoor flow. A convenient downstairs W/C completes the ground floor.

Upstairs, the first floor offers three generously sized double bedrooms and a family bathroom. One of the bedrooms has direct access to a roof terrace your private haven for morning coffee or evening sunsets. The top floor is dedicated to the expansive principal suite, complete with an en-suite bathroom and ample storage, offering a peaceful sanctuary to unwind.

Solent Road is conveniently located just moments away from West End Lane which offers easy access to a variety of shops, bars and restaurants. Transport links include Thameslink, London Overground and West Hampstead tube station (Jubilee line).

### Features

- Four Bedrooms
- Two Bathrooms
- Private Garden and Terrace
- Victorian House
- Period Features
- No Onward Chain





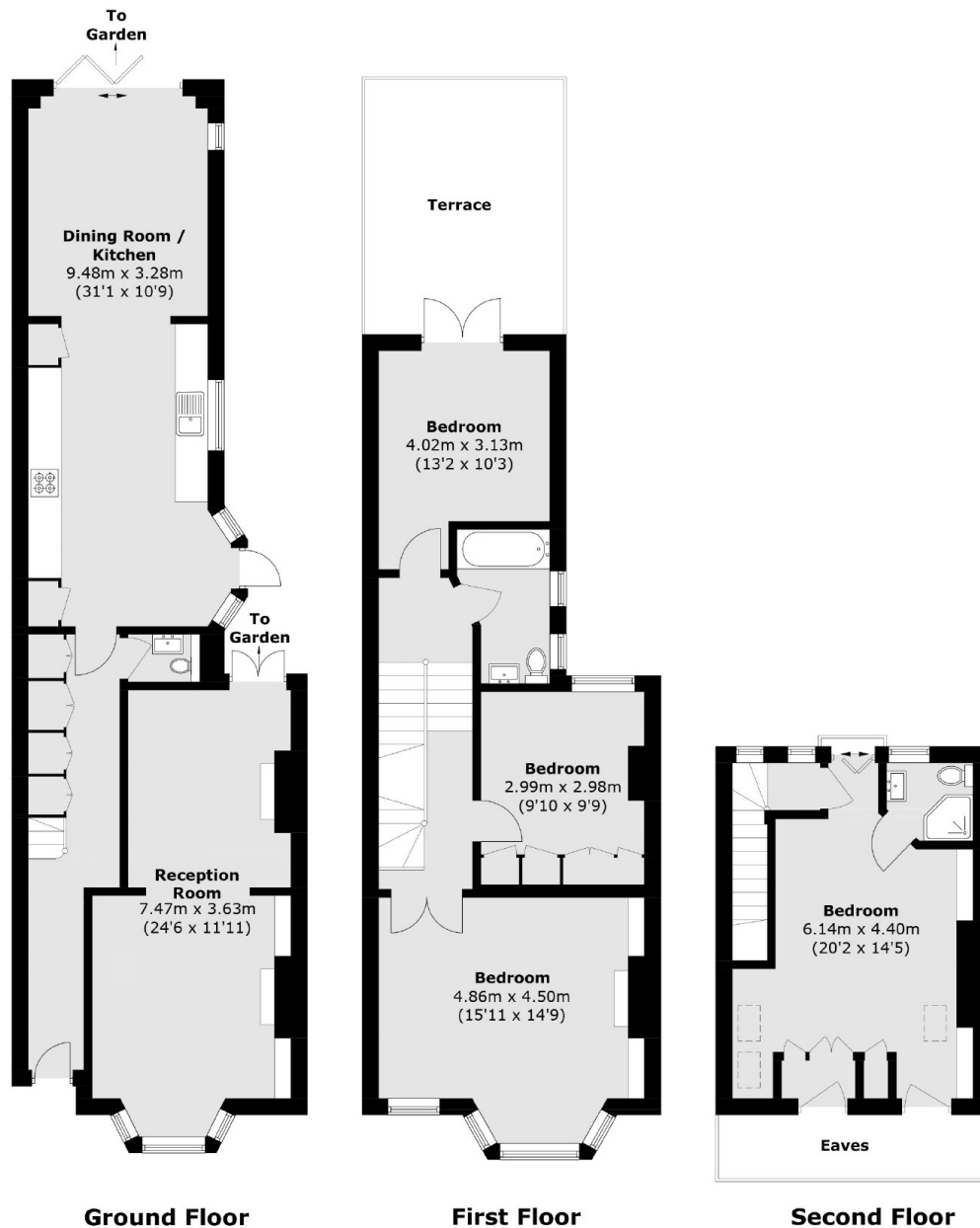








# Solent Road, London, NW6



Total area (approx.): 158.2 sq. m (1,701.8 sq. ft)  
Terrace: 16.9 sq. m (181.9 sq. ft)  
(Excluding Eaves)

## Dexters

West Hampstead Sales  
349 West End Lane  
London  
NW6 1LT  
Sales  
020 7644 9300

Energy Rating: C. We aim to make our particulars both accurate and reliable. However they are not guaranteed; nor do they form part of an offer or contract. If you require clarification on any points then please contact us, especially if you're traveling some distance to view. Please note that appliances and heating systems have not been tested and therefore no warranties can be given as to their good working order.

**RICS** Regulated  
Estate Agent  
and Letting Agent

dexters.co.uk