



Hermit Place, NW6

£750,000

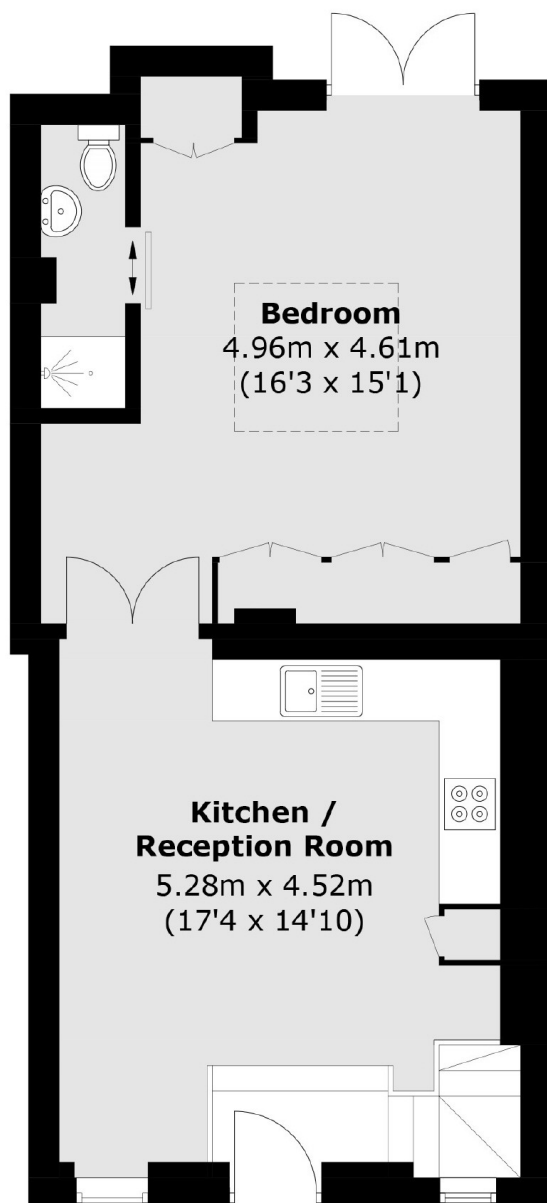
This charming freehold mews house is nestled at the back of this private cobbled mews and features a private front courtyard, ample storage, and cottage features. The property boasts three double bedrooms and will be sold with no chain.

Hermit Place is close proximity to West Hampstead and Kilburn High Road amenities - Well connected transport links (Kilburn High Road Overground station (0.2 miles), Kilburn Park Bakerloo line (0.3 miles), West Hampstead Jubilee line, Thameslink and Overground (0.5 miles))

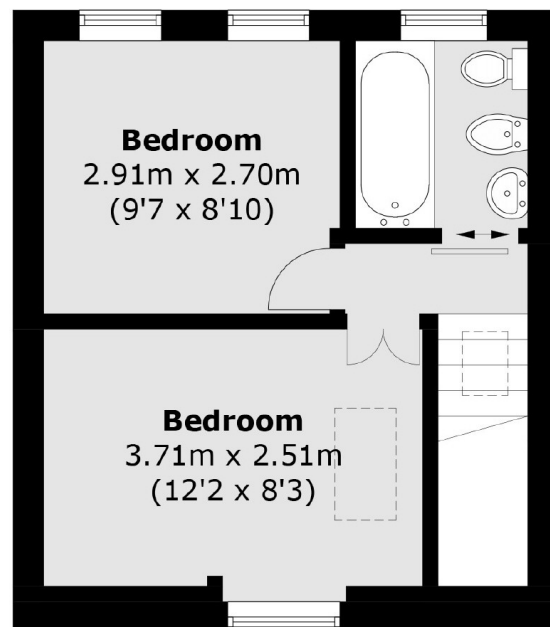
Features

- Freehold House
- Private Courtyard
- Three Double Bedrooms
- Private Cobbled Street
- Exposed Beams
- Close To Amenities

Hermit Place, London, NW6



Ground Floor



First Floor

Total area (approx.): 73.1 sq. m (786.8 sq. ft)