



**Fairfax Place, NW6**

**£1,900,000**

**Dexters**





## Fairfax Place, NW6

A rare opportunity to purchase a four bedroom house with a garage and two parking spaces tucked away on a charming, secluded cobbled street just moments from South Hampstead Station offering the perfect blend of tranquillity and city convenience.

The reception room flows seamlessly into a sleek kitchen/dining area with integrated appliances, creating a warm and inviting heart of the home.

Upstairs includes a family bathroom, three double bedrooms, two with en-suites and a further bedroom which has been transformed into a walk-in wardrobe, perfect for those in need of additional hanging space.

Of these the principal bedroom is on the top floor with plenty of fitted wardrobes and a newly refitted shower room.

Fairfax Place is a really quiet no through road in South Hampstead, five minute walk to both Swiss Cottage and Finchley Road tube stations for quick access into London. There are local shops, cafés and restaurants just around the corner on Fairfax Road and Fairhazel Gardens.

### Features

- Freehold House
- Four Bedrooms
- Garage
- Two Parking Spaces
- Three Bathrooms
- Private Garden





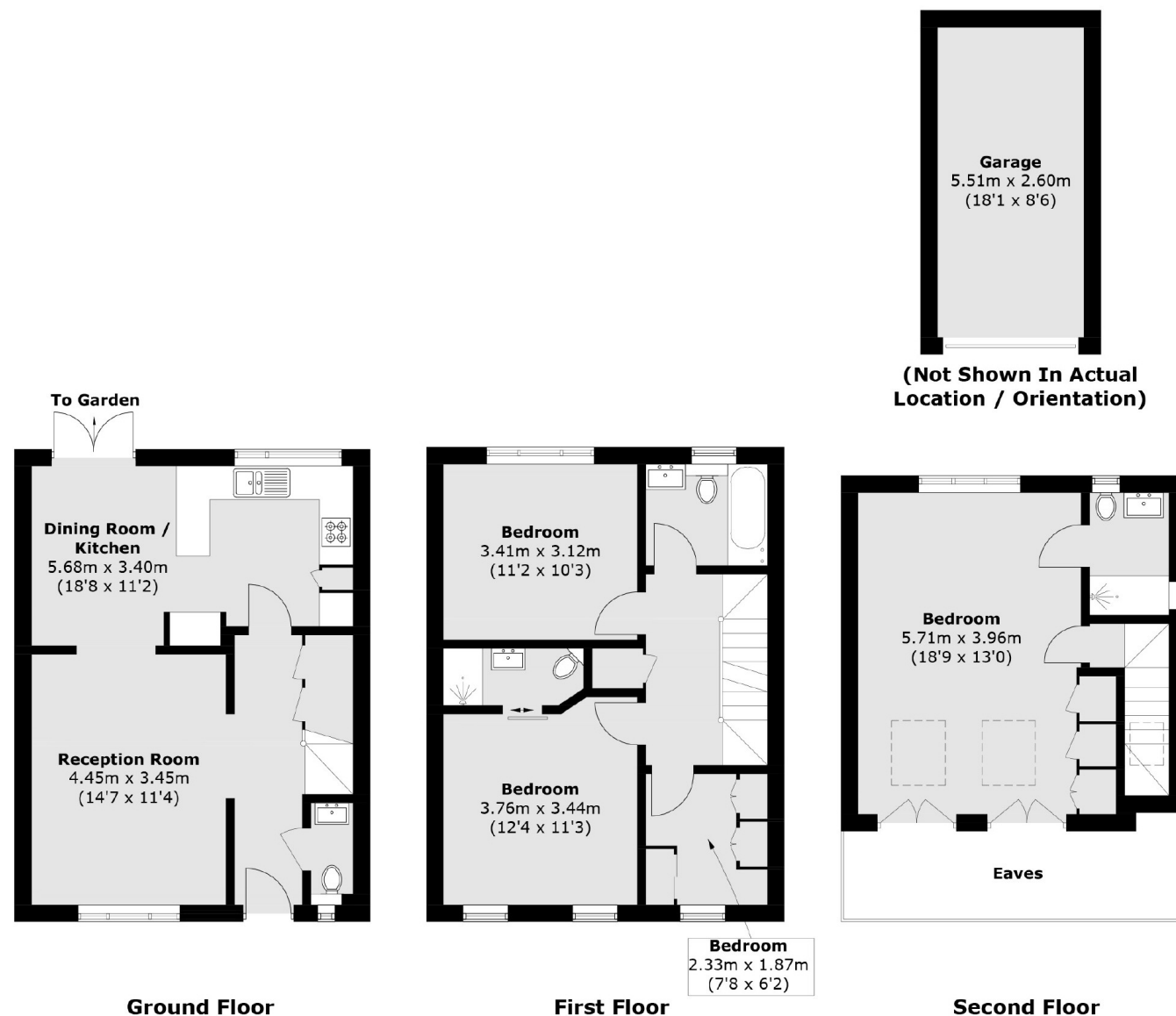








# Fairfax Place, London, NW6



Total area (approx.): 121.4 sq. m (1,306.6 sq. ft)  
(Excluding Eaves)  
Garage: 14.3 sq. m (153.9 sq. ft)

## Dexters

West Hampstead Sales  
349 West End Lane  
London  
NW6 1LT  
Sales  
020 7644 9300

Energy Rating: C. We aim to make our particulars both accurate and reliable. However they are not guaranteed; nor do they form part of an offer or contract. If you require clarification on any points then please contact us, especially if you're traveling some distance to view. Please note that appliances and heating systems have not been tested and therefore no warranties can be given as to their good working order.

**RICS** Regulated  
Estate Agent  
and Letting Agent

dexters.co.uk