



Kingsgate Place, NW6

£385,000

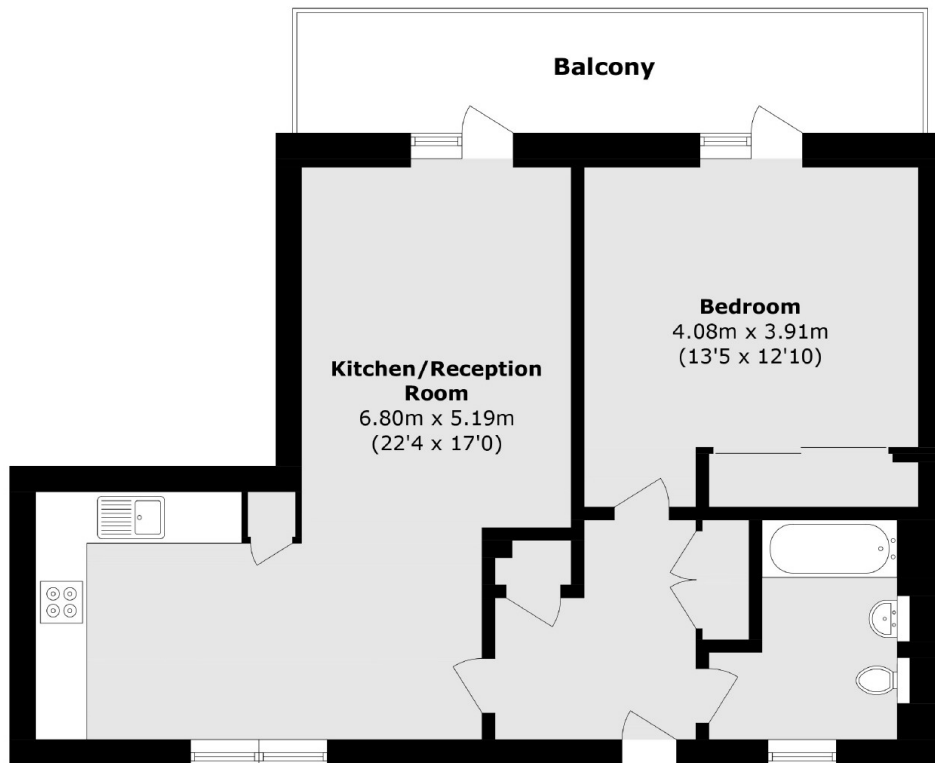
A very spacious one bedroom modern apartment located on top floor (with lift) offering over 620 sq ft of internal accommodation. Benefits include a private balcony, communal gardens, no onward chain and the hot water and heating is included in the service charge.

Kingsgate Place is well positioned for West Hampstead overground and underground stations (Jubilee line) and Thameslink and is close to the shops, bars and restaurants that both West Hampstead and Kilburn have to offer.

Features

- One Bedroom
- Private Balcony
- Communal Gardens
- Lift Service
- Close To Station
- No Onward Chain

Kingsgate Place, London, NW6



Total area (approx.): 58 sq. m (624.3 sq. ft)
Balcony area (approx.): 10.3 sq. m (110 sq. ft)