



Beswick Mews, NW6

£699,950

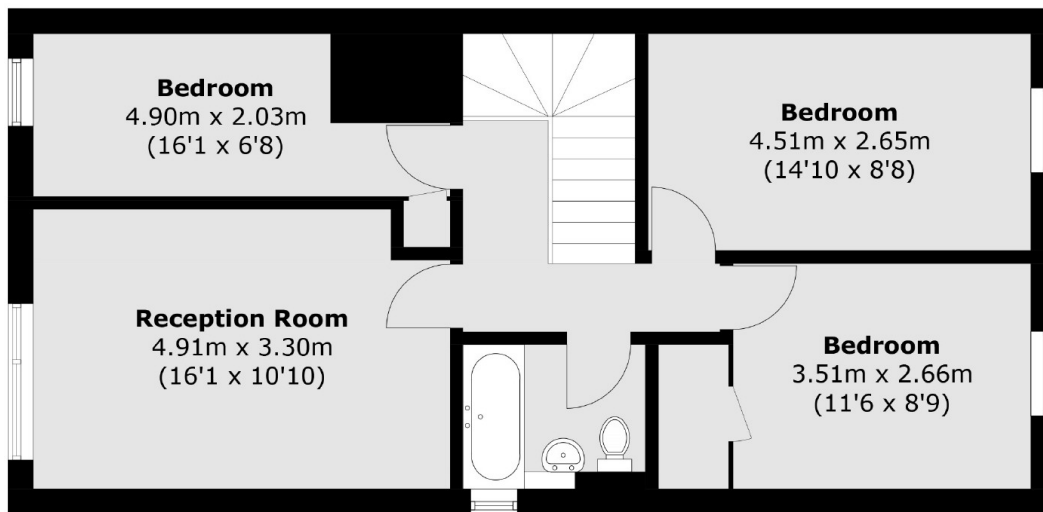
This spacious four bedroom garden flat has its own entrance and is spread over the ground and first floor of this purpose built building. The property will be sold with no onward chain.

The property is located less than half a mile away from the areas popular West End Lane with its many local amenities, boutique shops, pubs and restaurants as well as both West Hampstead stations (Underground & Thameslink).

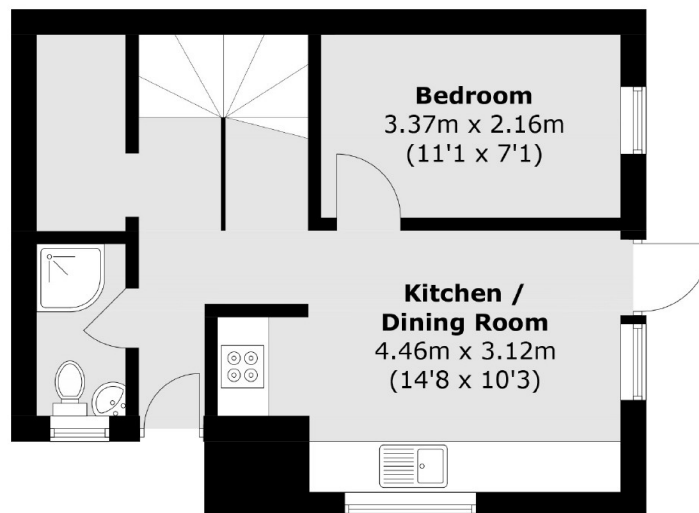
Features

- Four Bedrooms
- Private Garden
- Kitchen Dining Room
- Own Entrance
- Over 1000 sq ft
- No Onward Chain

Beswick Mews, London, NW6



First Floor



Ground Floor

Total area (approx.): 97.6 sq. m (1,050.5 sq. ft)