



Gondar Gardens, NW6

£1,000,000

A stunning two bedroom, two bathroom apartment on the top two floors of this period house. Located on a quiet street, the apartment features some real charm and character.

Gondar Gardens is a quiet backwater residential road close to the huge selection of public transport on West End Lane. A short walk to all the bars, restaurants and shops you'll need.

Features

- Two Bedrooms
- Two Bathrooms
- Stunning Living Space
- South Facing Terrace
- Duplex
- Wooden Floors



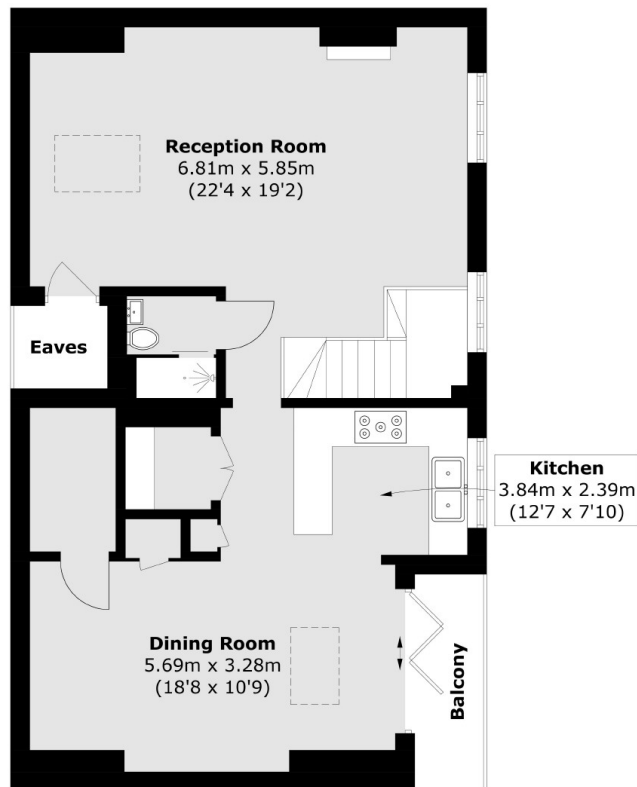
Gondar Gardens, NW6

As you enter the property, you're welcomed by a spacious entrance hallway. To the left is a stylish, family-sized bathroom, and a generously proportioned principal bedroom complete with ample fitted storage and a walk-in wardrobe. To the right is another well-sized double bedroom, also featuring built-in wardrobes.

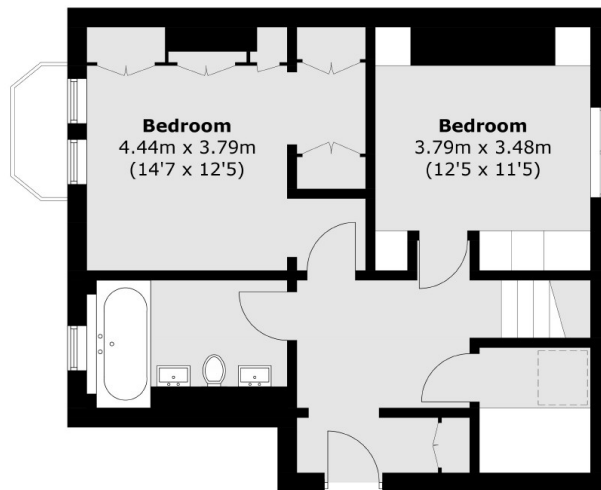
Upstairs, the apartment is flooded with natural light thanks to its large windows and high ceilings. The expansive living room offers stunning panoramic views across London, creating the perfect space for relaxing or entertaining. This floor also benefits from a modern second bathroom and a convenient laundry room. To the rear, you'll find a contemporary kitchen with dining area, opening out to a beautiful south-facing private terrace. The bi-folding doors create a seamless transition between indoor and outdoor living



Gondar Gardens, London, NW6



Third Floor



Second Floor

Total area (approx.): 124.0 sq. m (1,334.7 sq. ft)
(Excluding Eaves)
Balcony: 3.6 sq. m (38.7 sq. ft)