



## Hendon Way, NW2

£500,000

Set on the first floor within a well-maintained purpose built block is this spacious apartment with a balcony. Comprising of two good size double bedroom, a west facing reception room, a separate kitchen, bathroom and separate WC.

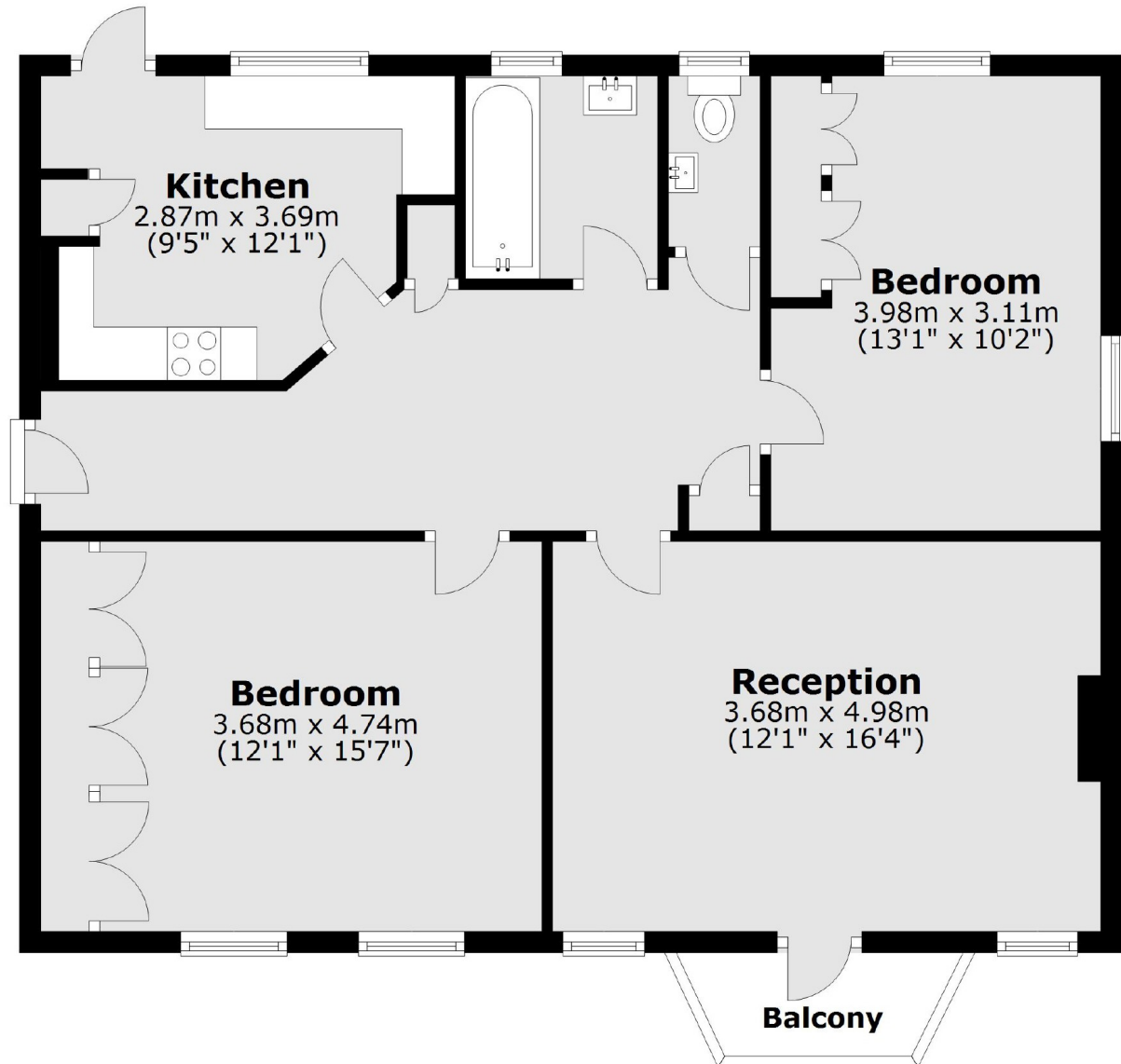
Hocroft Court is ideally located close to the numerous shops, bars and restaurants of Cricklewood and Golders Green, with Cricklewood Thameslink a short walk away.

### Features

First Floor Apartment  
Two Double Bedroom  
Separate Kitchen  
Balcony  
Communal Garden  
No Upper Chain,

Hendon Way,  
London, NW2

## First Floor



Main area: Approx. 80.6 sq. metres (867.8 sq. feet)  
Plus balconies, approx. 2.5 sq. metres (26.4 sq. feet)

**Dexters**

West Hampstead Sales  
349 West End Lane  
London  
NW6 1LT  
Sales  
020 7644 9300

Energy Rating: D. We aim to make our particulars both accurate and reliable. However they are not guaranteed; nor do they form part of an offer or contract. If you require clarification on any points then please contact us, especially if you're traveling some distance to view. Please note that appliances and heating systems have not been tested and therefore no warranties can be given as to their good working order.

 **RICS** | Regulated  
Estate Agent  
and Letting Agent

[dexters.co.uk](http://dexters.co.uk)