



Crediton Hill, NW6

£650,000

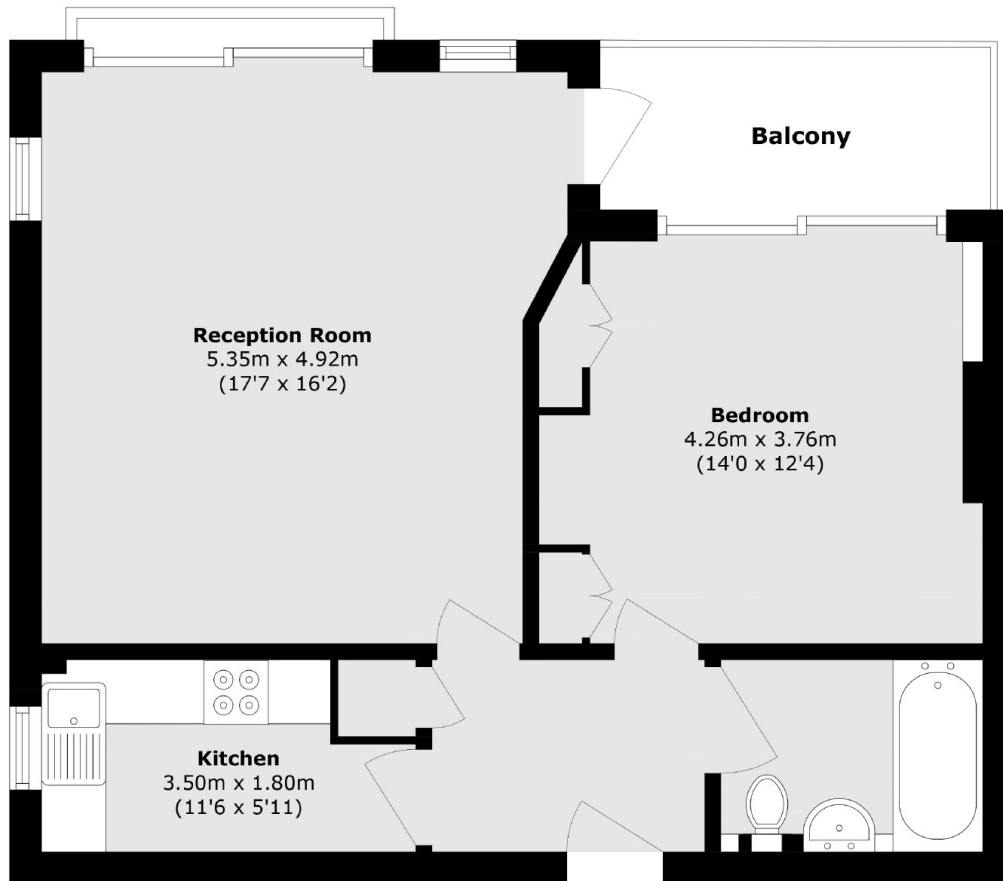
This spacious one bedroom flat is set on the second floor of this grand period converted house and is located on one of West Hampstead's most desirable tree-lined streets. The property will be sold with no onward chain.

Crediton Hill is a highly sought after quiet residential street which is conveniently located with easy access of the shops, bars and restaurants of West Hampstead including multiple transport links.

Features

- Second Floor
- Prime Location
- Close To Station
- Separate Kitchen
- Balcony
- No Onward Chain

Crediton Hill, London, NW6



Total area (approx.): 58.0 sq. m (624.3 sq. ft)

Balcony area (approx.): 5.5 sq. m (59.2 sq. ft)

Dexters

West Hampstead Sales
349 West End Lane
London
NW6 1LT
Sales
020 7644 9300

Energy Rating: TBC. We aim to make our particulars both accurate and reliable. However they are not guaranteed; nor do they form part of an offer or contract. If you require clarification on any points then please contact us, especially if you're traveling some distance to view. Please note that appliances and heating systems have not been tested and therefore no warranties can be given as to their good working order.

 **RICS** | Regulated
Estate Agent
and Letting Agent

[dexters.co.uk](https://www.dexters.co.uk)